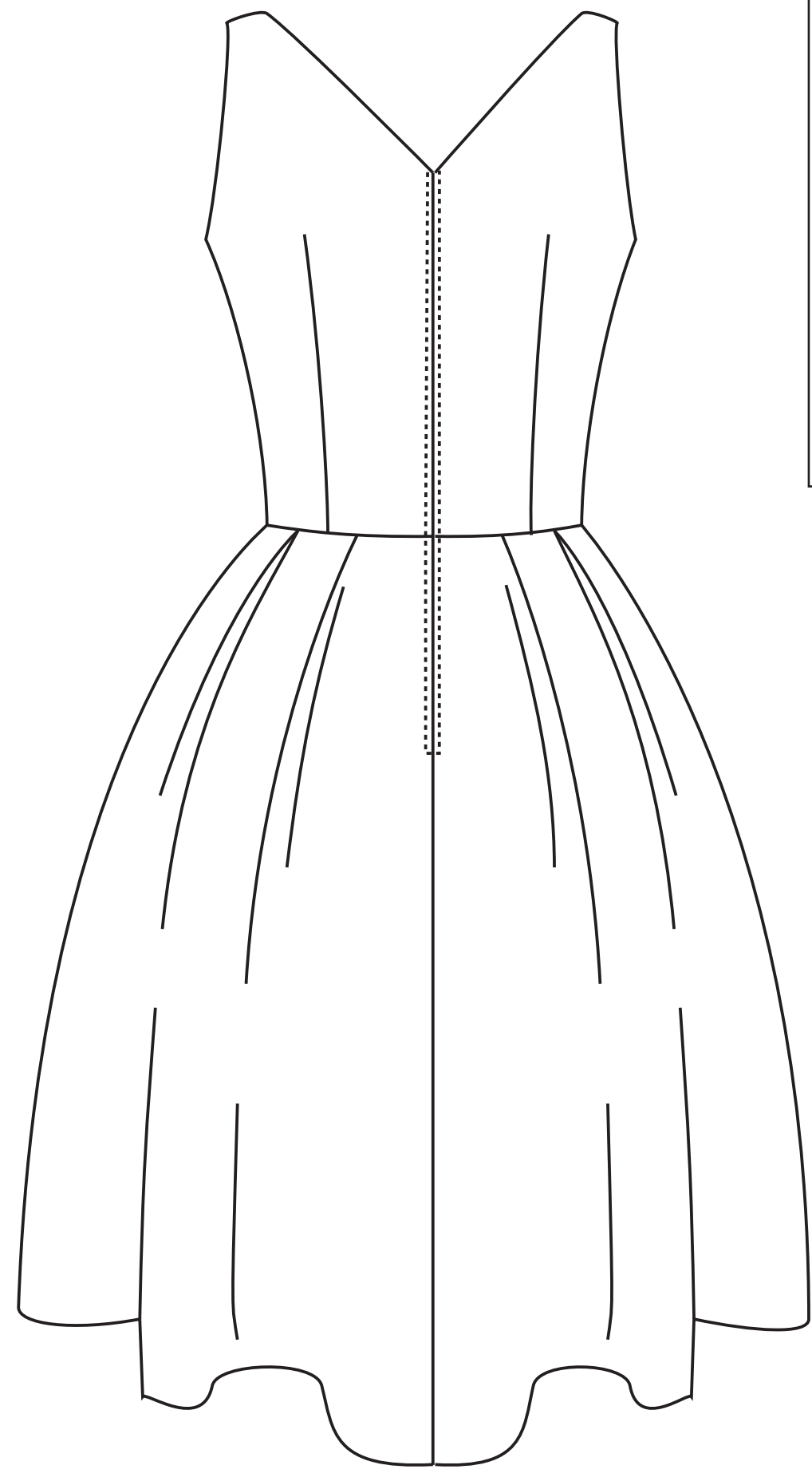
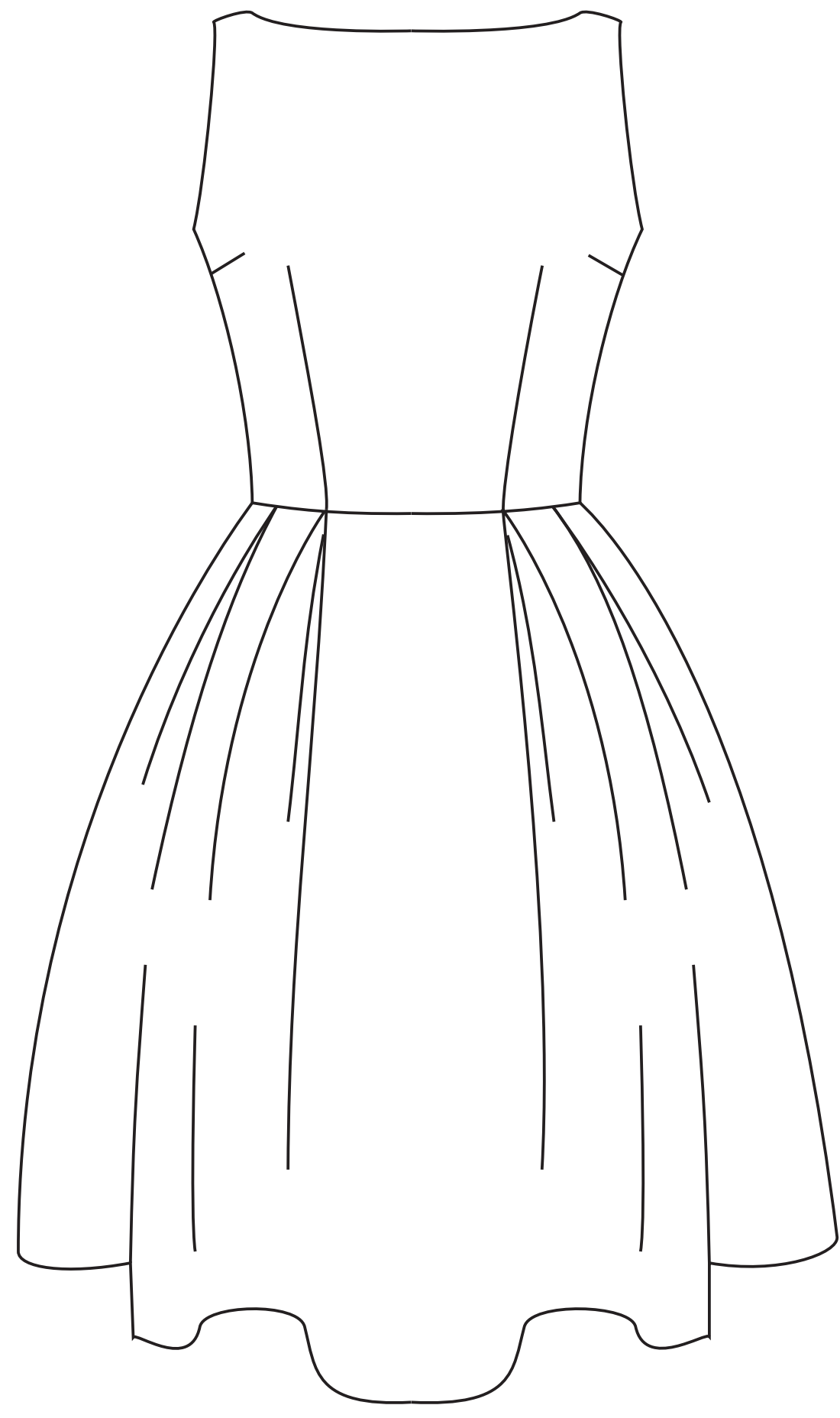
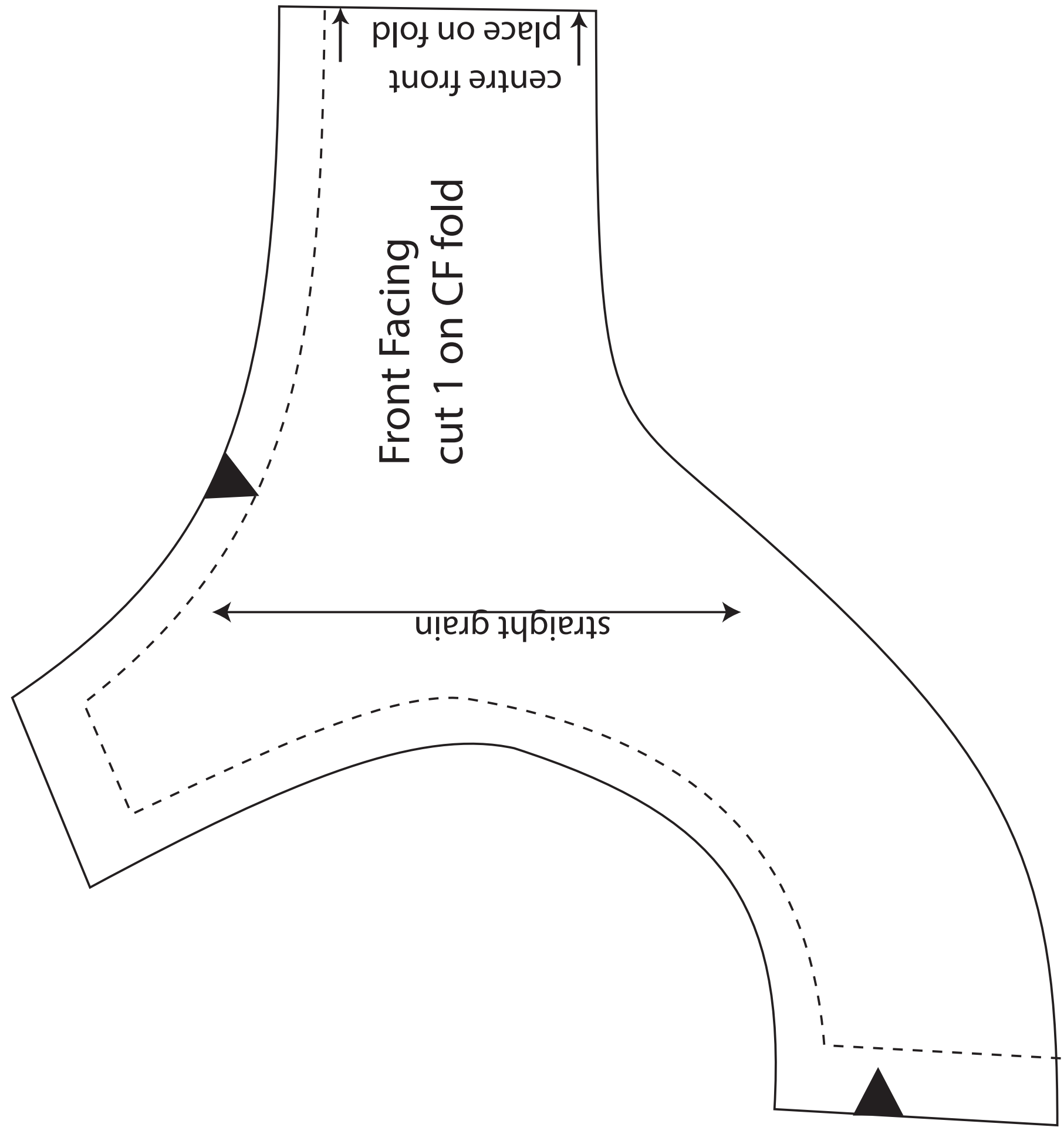


Dress fits bust 88 cm, waist 69 cm (M&S size10)  
Hem circumference: 230 cm, Skirt length: 61 cm



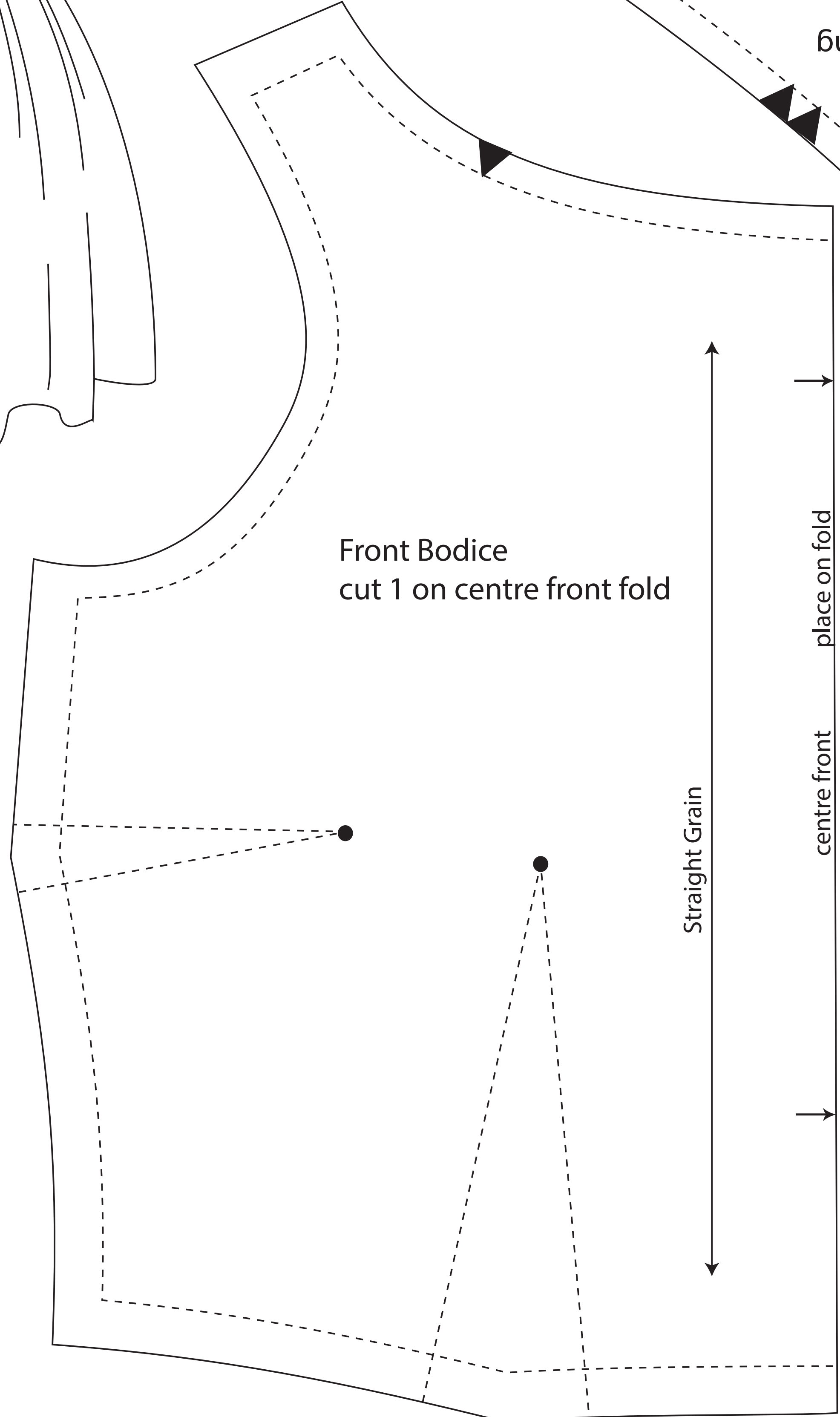
10cm x 10cm  
print accuracy  
check square



Front Facing  
cut 1 on CF fold

place on fold  
centre front

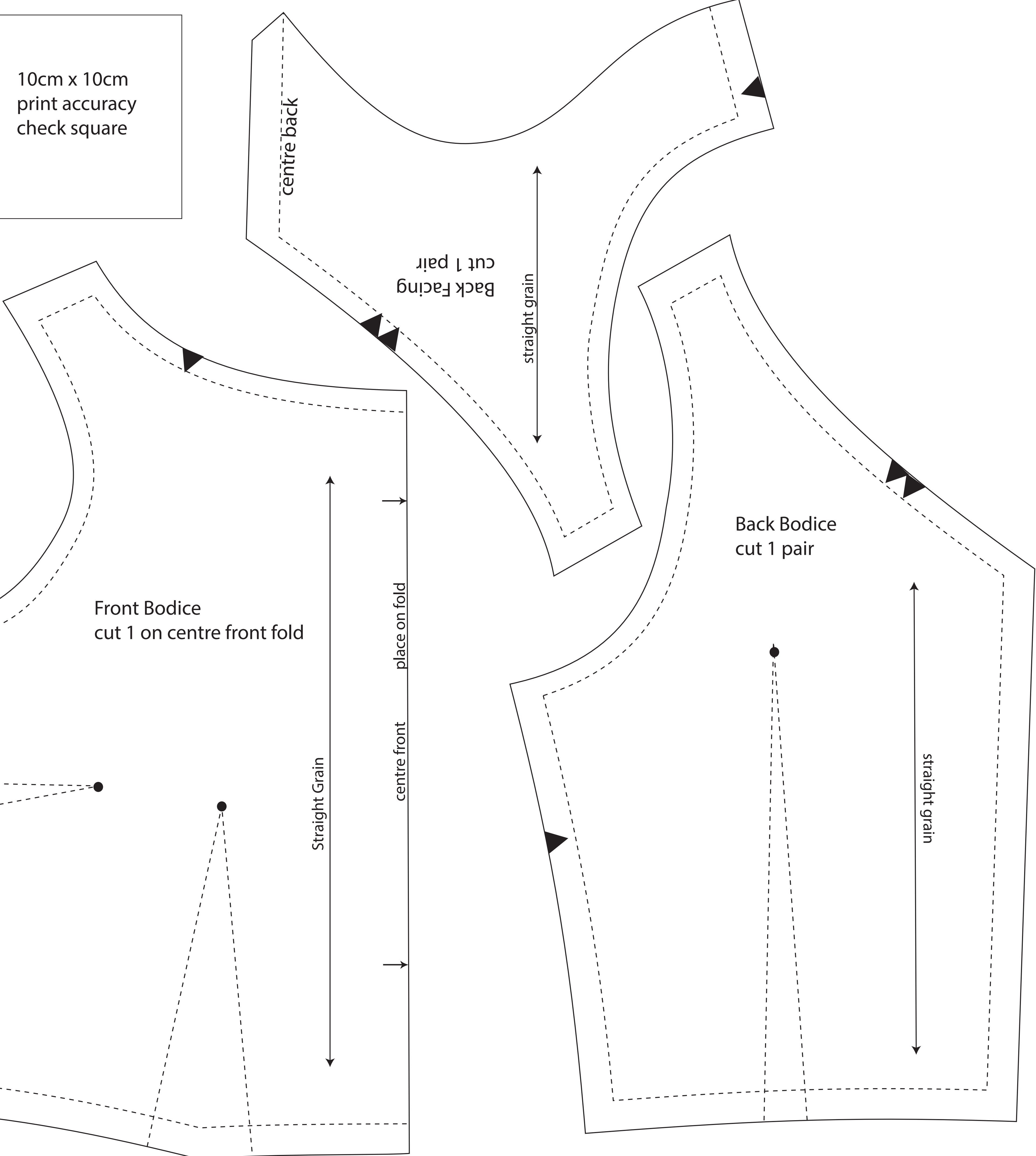
straight grain



Front Bodice  
cut 1 on centre front fold

Straight Grain

place on fold  
centre front



centre back

Back Facing  
cut 1 pair

straight grain

Back Bodice  
cut 1 pair

straight grain