

ՏԵՎ ՄԵՐԱՎԵՆՈՍ  
“A modern make on vintage style”  
[VeraVenus.com](http://VeraVenus.com)



1930's style

VeraVenus™ Pyjama Top Bottoms NOT Included

UK 10/12  
bust 34/36"  
waist 27/29"  
hip 37/39"

£ free

VeraVenus Patterns  
London New York Brighton

ՏԵՎ ՄԵՐԱՄԵՆՍ  
“A modern make on vintage style”  
[VeraVenus.com](http://VeraVenus.com)

VeraVenus 1930's style pyjama top

Semi-fitted U-neck top with circular very fluted cap sleeves. The upper bodice is cut on the straight grain while the lower and sleeves are cut on the bias. The U-neck is finished with contrast out-facing band and the sleeve and body hems are finished with narrow contrast bias bindings. The belt is made from contrast fabric too. Some seams are french seamed while others are clean -finished with bias bindings.

**MEASUREMENTS:** It has been drafted to fit a UK 10/12 at 5'4" tall with back waist of 15 1/2"

Body measurements : bust-34-36", waist 27-29" and hip 37-39".

The back seam finishes approx 1 1/2" above the waist and shoulders are 4". The armhole finishes at about 40cm (16").

If you like a looser armhole simply scoop it a bit deeper in the area below the sleeve notches.

**FABRICS:** Best with soft woven fabrics with a nice hang on the bias:

ie. silky synthetics, silks, rayons and very soft cottons.

The top takes about 1.30m (1 1/2 yards) and about .60 (2/3<sup>rd</sup> yard) of contrast fabric. Please do lay out the pattern and double check before buying fabric!!

**INTERFACING:** you need just enough for the neck facing pieces.

**ԸՆԴՄԱԳ ԹԱԿ:** The bias patterns pieces are best mirrored where indicated to make a complete pattern and the bias pieces then cut as a single layer of fabric as trying to cut bias on the fold can often go off-grain and will then hang badly or twist.

**ԲԵԼՏ:** There are no pattern pieces for the belt -I simply it to the following measurements:

176cm long x 9cm wide on straight grain.

**ԲՆԱՏ ԸՈՄԴՐԱՏԻ ԲՈՒԾՈՂՈՑ:** I cut mine 4cm wide. Best to measure on the pattern itself the areas you intend to contrast bind (if any) and work out the amount of bindings you need that way. To bind all the edges on my sample top I cut about 4meters of binding from my contrast colour fabric.

**ԲԱՏԵ ՏԵՎՈՂ ՏՏԵՔՏ:**

1- sew shoulder seams of body with french seams. Stay-stitch neck line.

2- prepare contrast neck band: apply iron-on fusing (I often use light weight jersey fusing when using silky fabrics as it stays soft yet still helps control over stretching)

Attach facing shoulder seams and the centre front seam. Press open. Stay-stitch outer edge near fold line, press seam allowance under to get nice curves. Clip and trim as needed to be nice and flat.

3- Pin with with right side of facing to wrong side of bodice. Sew, clip, trim and under-stitch neckline. Press contrast band over to the right side of bodice and pin pre-pressed outer edge in place. Machine topstitch in place close to the outer edge.

4-Bind sleeve hems with contrast bias strips or do a tiny machine hem if you don't want a binding.

5-Join side seams of upper top Գ Ե Բ and lower Գ Ե Բ. I french seamed mine.

6-Set in the sleeves matching the balance notches. Trim seam allowance down to 1/2 centimeter, clip into the curves to release them and clean finish the armholes with bias binding strips.

7- Pin the 2 little back tucks in place. Make gathers below the front bust between the notches and join the upper bodice to the to the lower. I think a french seam is too bulky here ... maybe better to sew a regular seam and



# ՏԵՎ ՄԵՐԱՄԵՆՍ

“A modern make on vintage style”

[VeraVenus.com](http://VeraVenus.com)

clean finish with bias binding strips or double stitch and pink the edges.

8- Sew and turn through the tie-belt. 9- Try on your top, mark at side seam where the belt sits best on you. Make two little fabric rouleaux for belt loops or make thread loops if preferred.

11- To finish the PJ top hem bias bind as the sleeve hems or machine a tiny rolled hem.

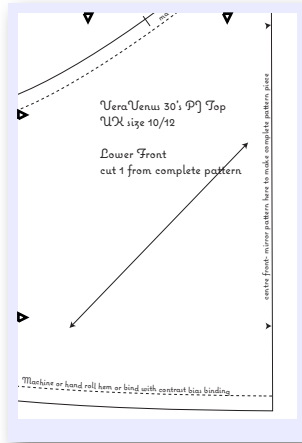
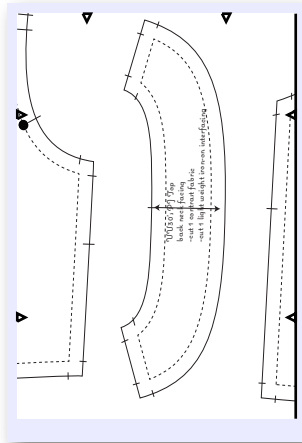
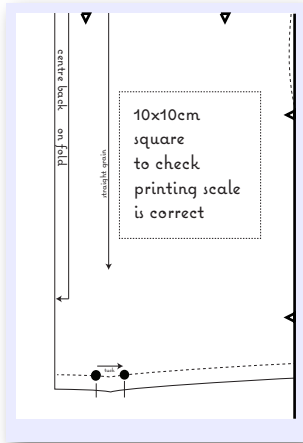
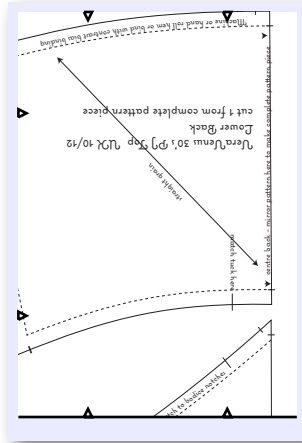
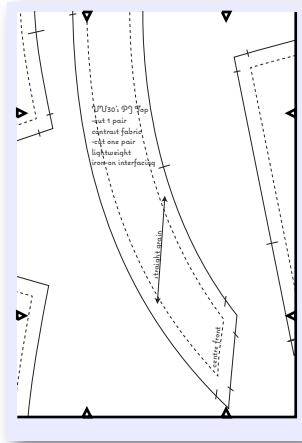
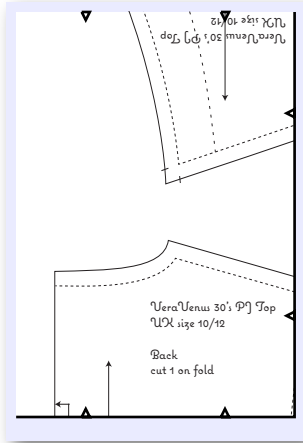
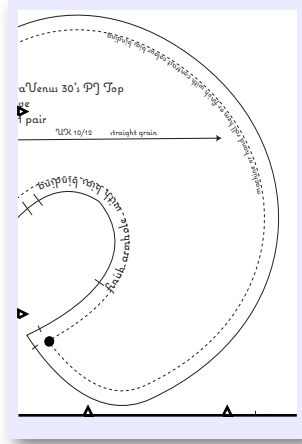
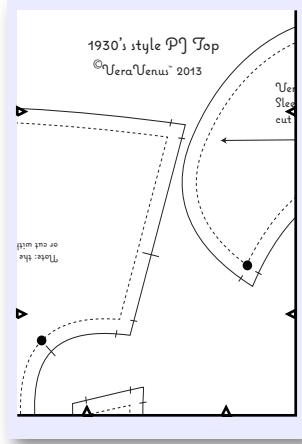
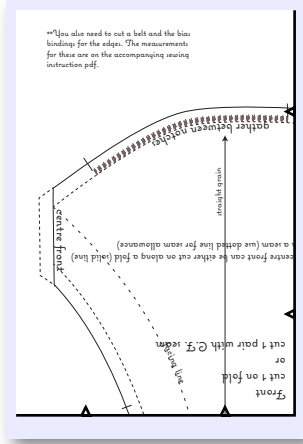
For the pj bottoms I made a loose wide legged pattern, fairly low in the crutch so they are comfy to lounge around in. The French Knicker Drafting pdf I posted shows how to draft some similar bottoms to your own measurements.

The legs are 28”/ 71cm circumference if you’d like yours to look as wide as mine.

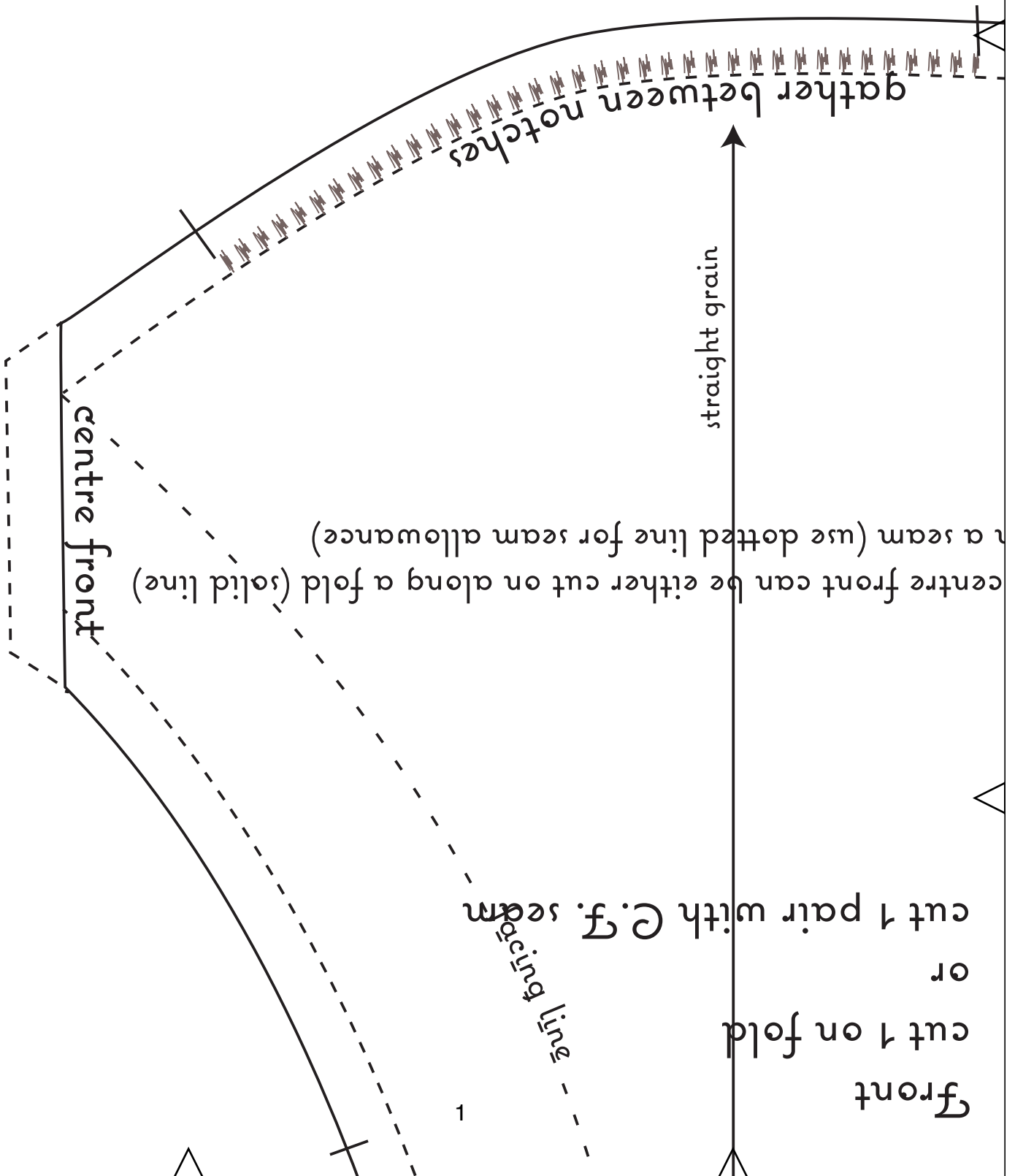
I finished them with a contrast fabric waist band with some wide elastic in it and a left side 6” placket that closes with poppers.

And there you have a VeraVenus “modern make on vintage style”.



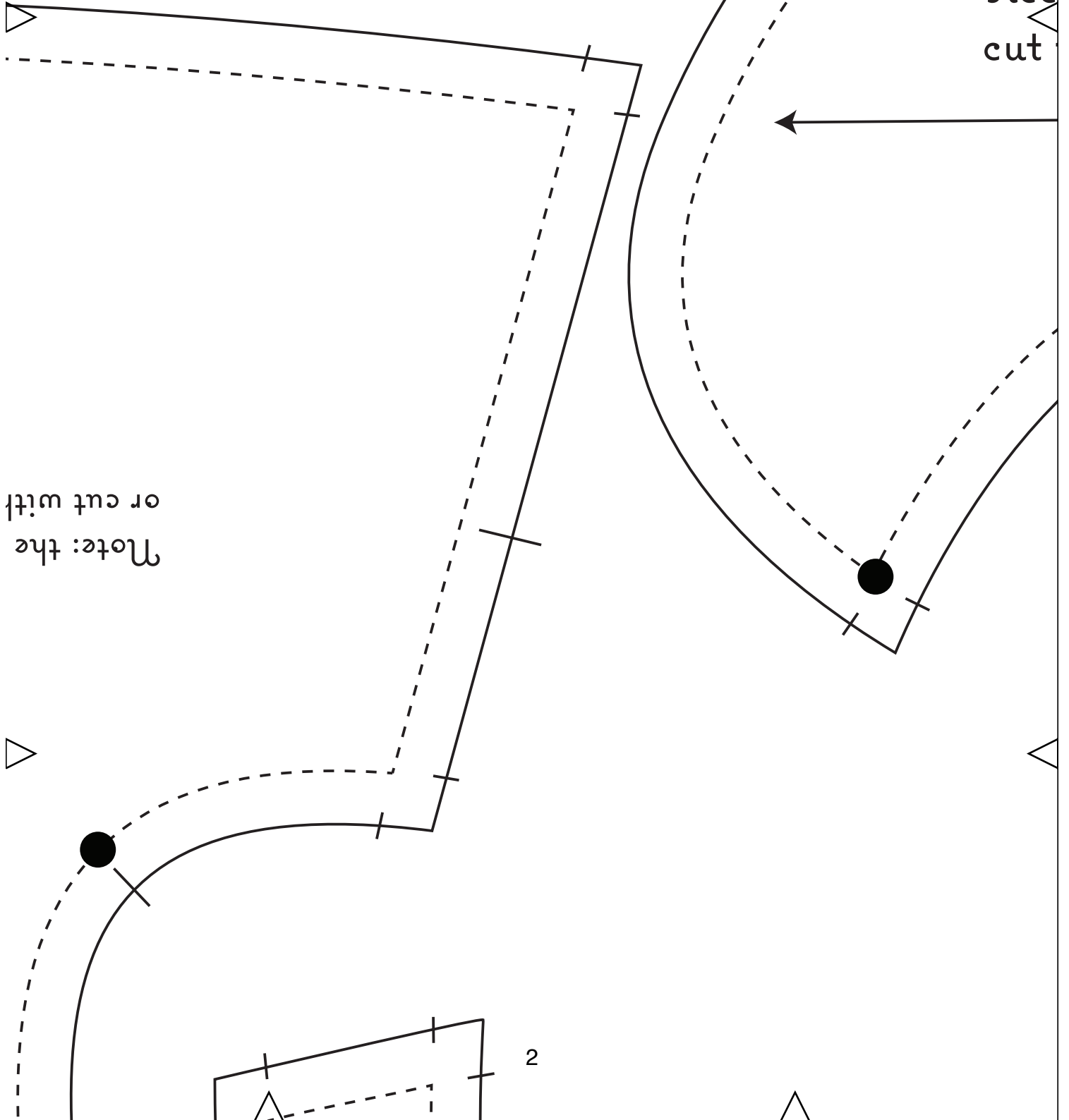


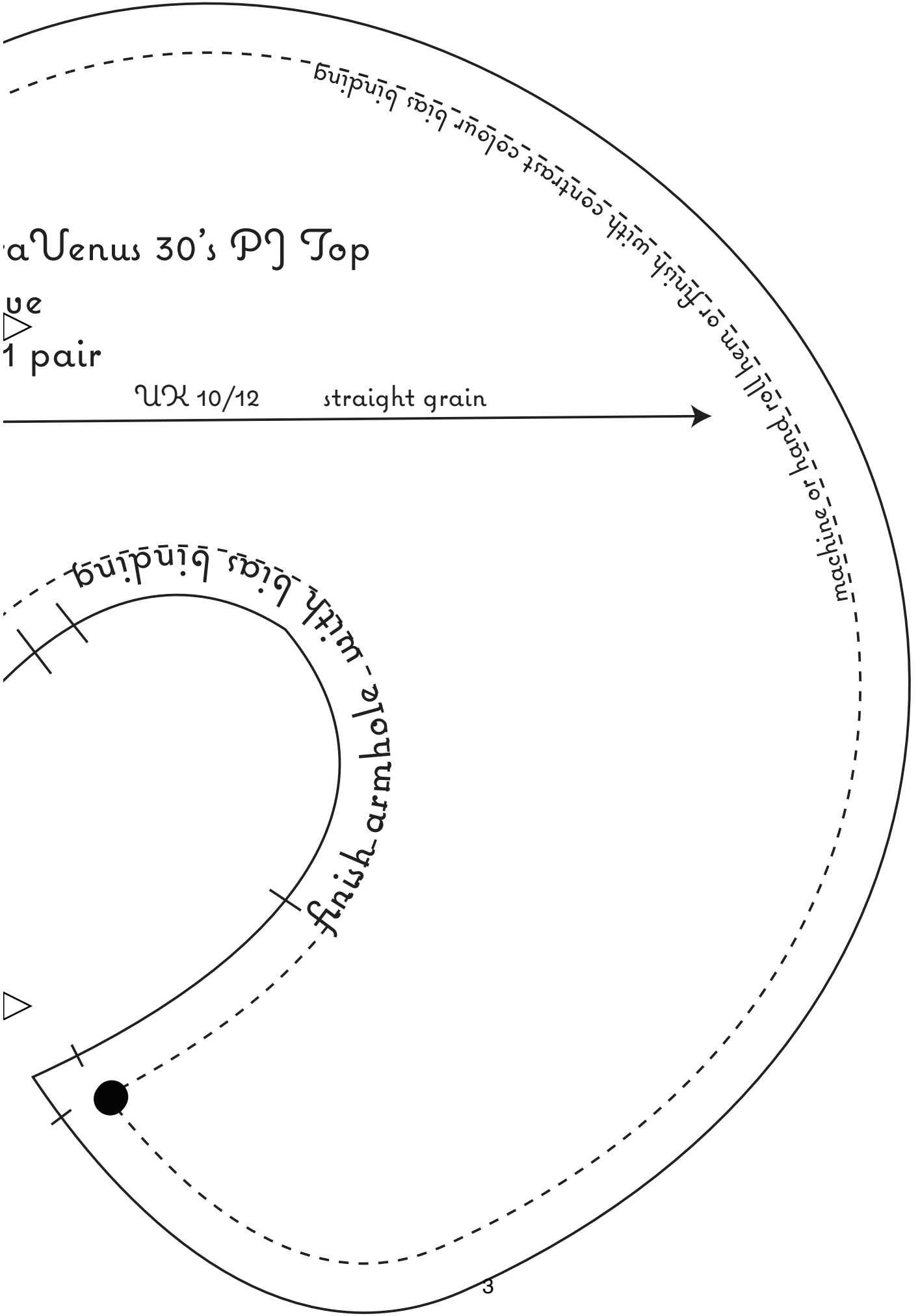
\*\*You also need to cut a belt and the bias bindings for the edges. The measurements for these are on the accompanying sewing instruction pdf.



# 1930's style PJ Top

© Vera Venus™ 2013





a Venus 30's Pj Top

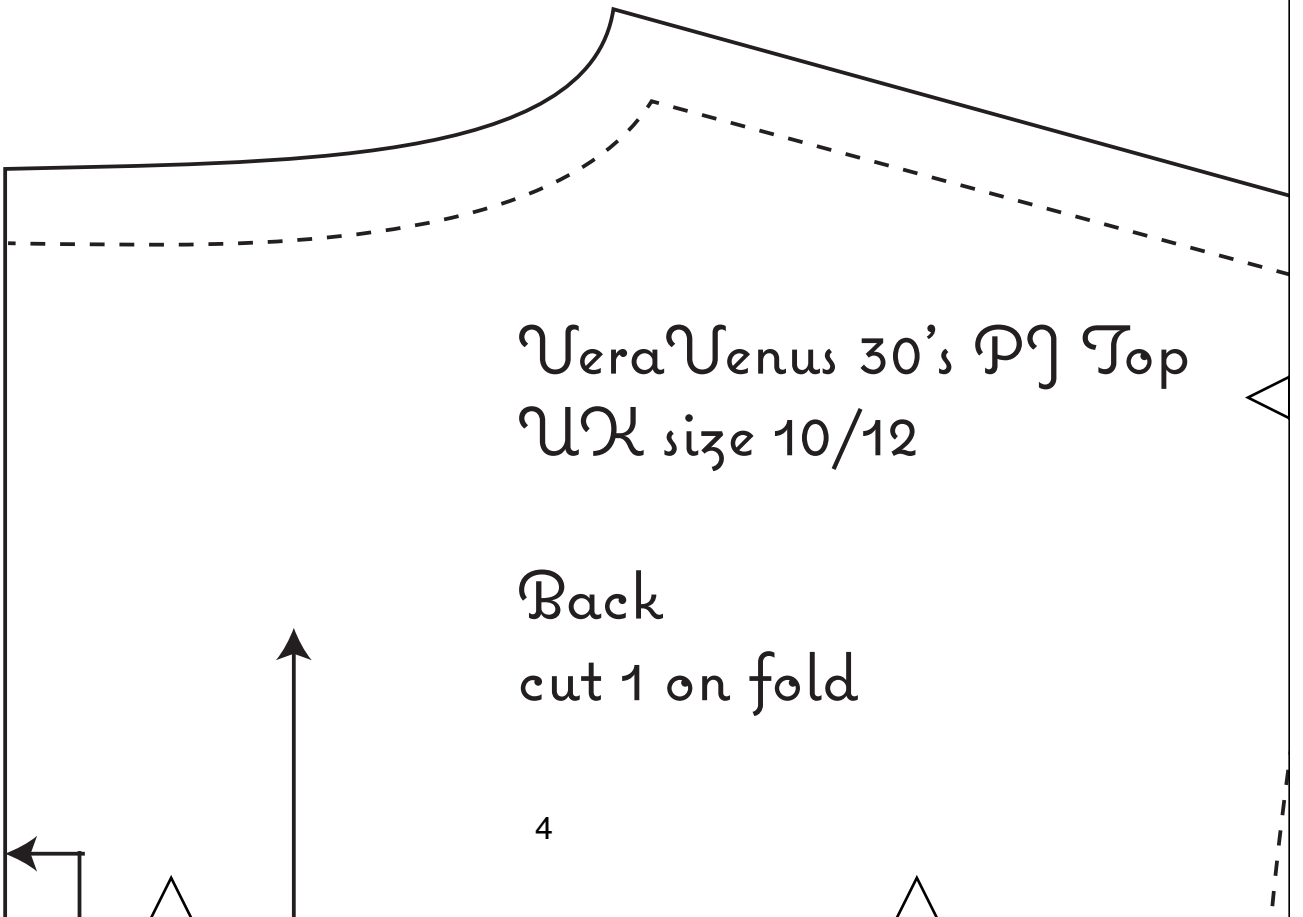
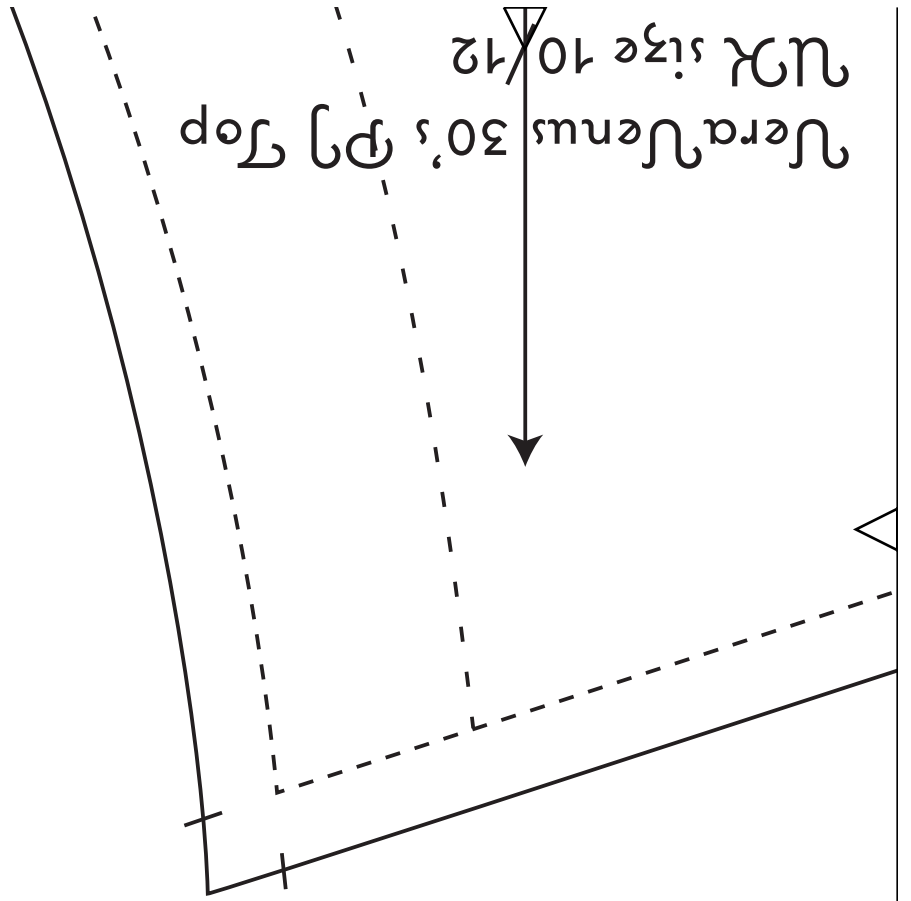
ue  
 1 pair

Ux 10/12 straight grain

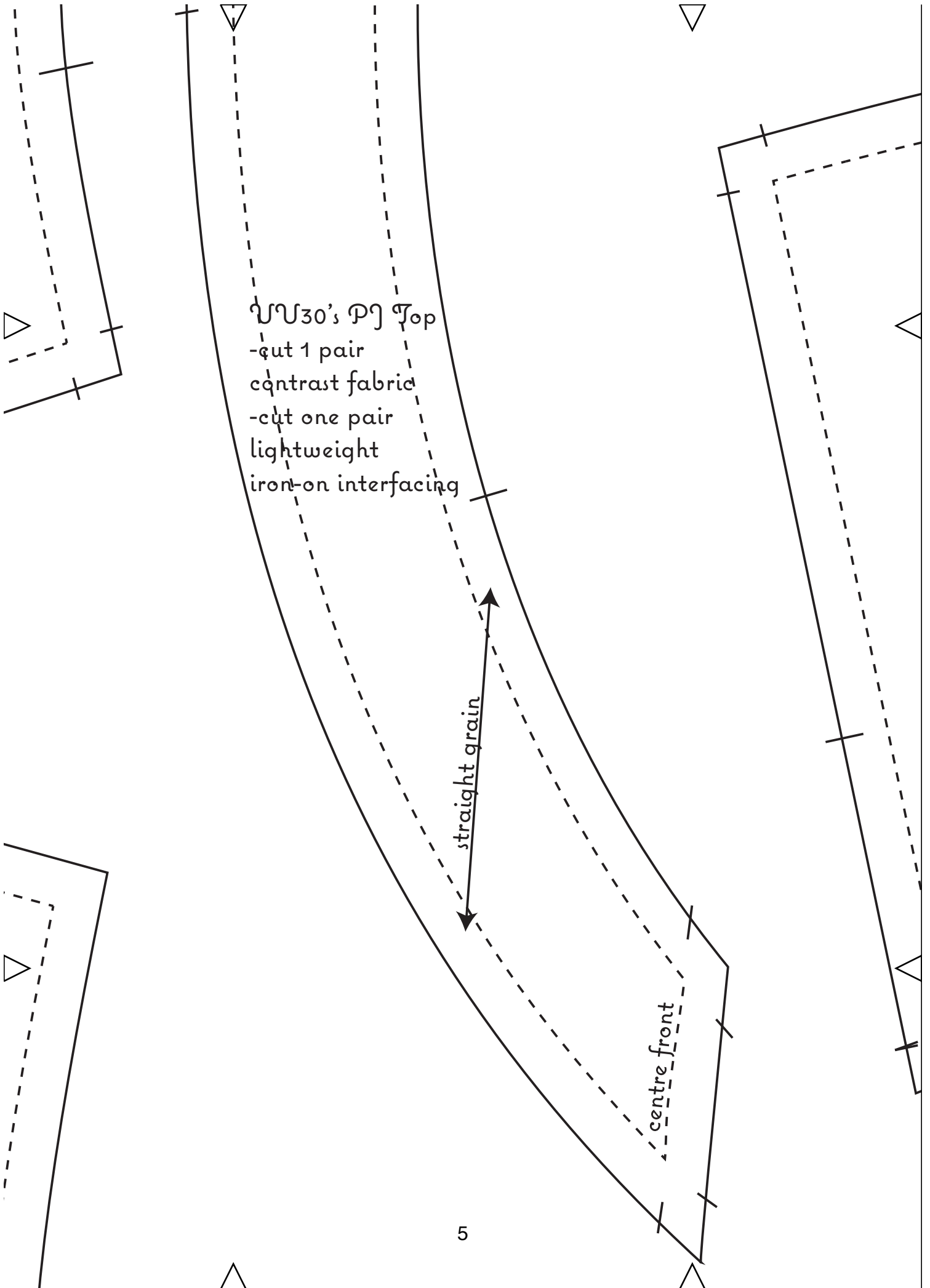
finish armhole - with bias binding  
 finish armhole  
 finish armhole

finish with contrast colour bias binding  
 finish with hem or hand roll hem  
 finish with hand roll hem or hand roll hem

3





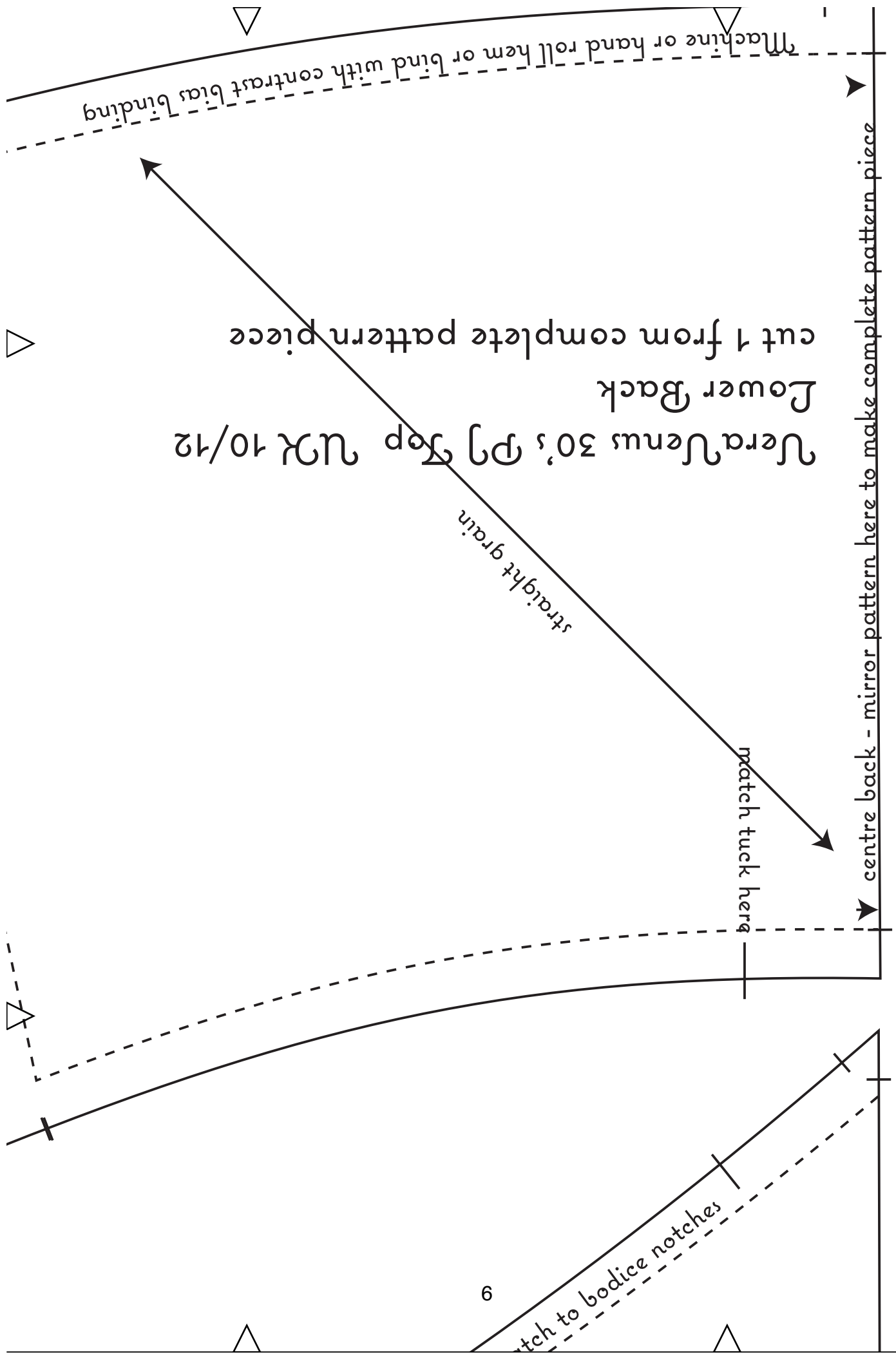


UU30's PJ Top

- cut 1 pair contrast fabric
- cut one pair lightweight iron-on interfacing

straight grain

centre front



Machine or hand roll hem or bind with contrast bias binding

Lower Back  
Vera Venus 30's PJ Top NR 10/12

straight grain

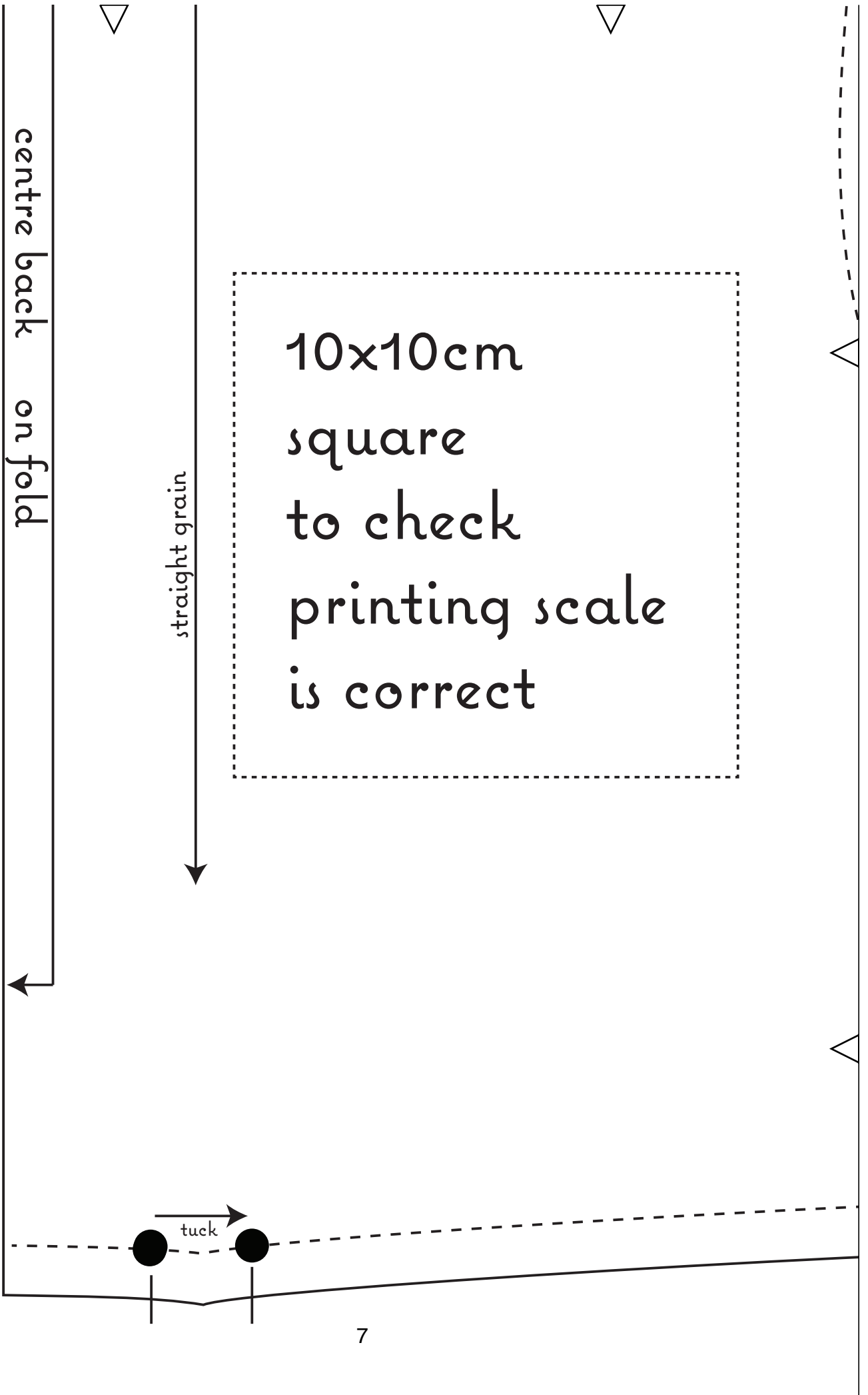
match tuck here

centre back - mirror pattern here to make complete pattern piece

6

match to bodice notches

match tuck here

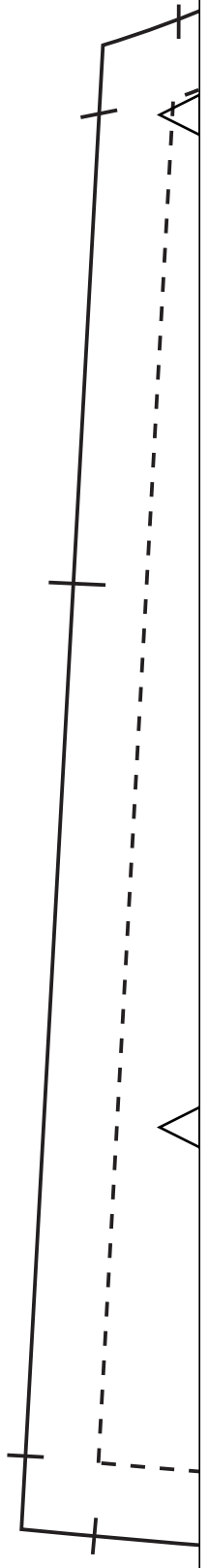
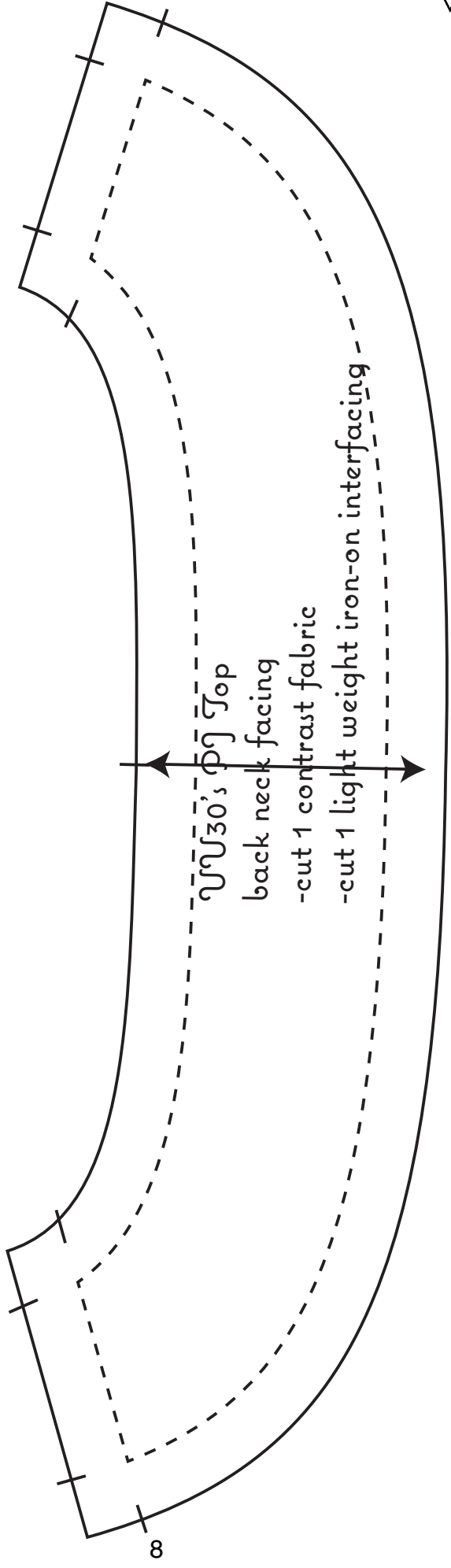
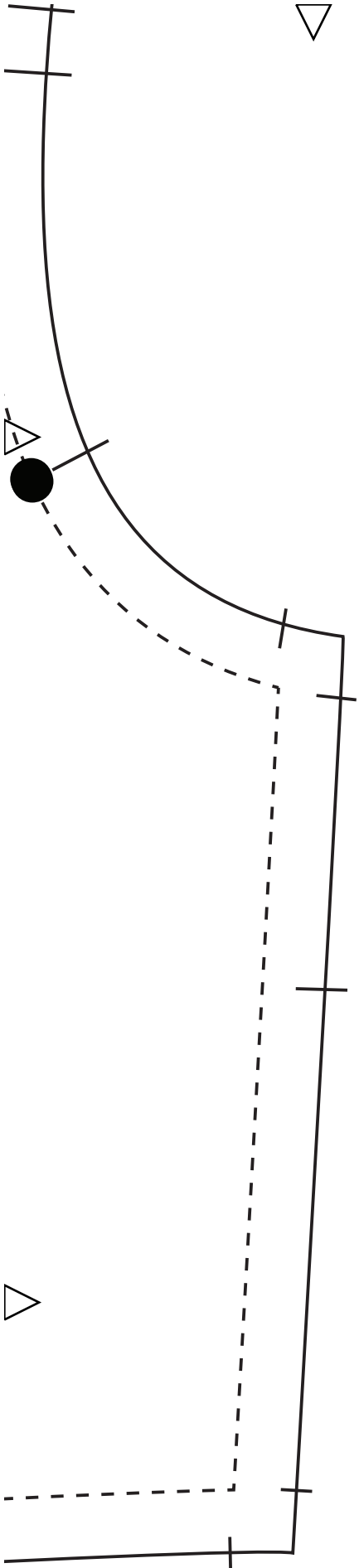


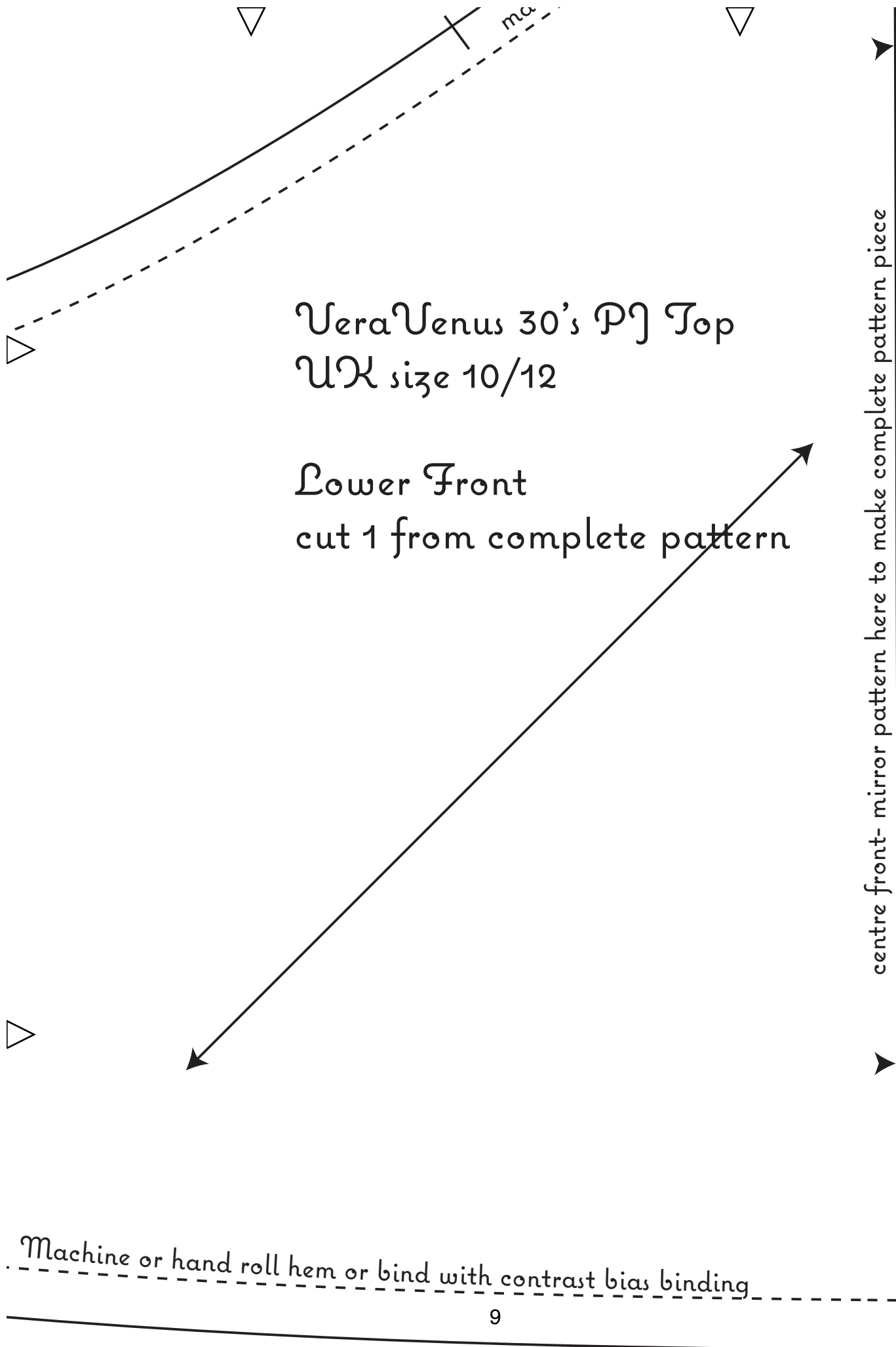
centre back on fold

straight grain

10x10cm  
square  
to check  
printing scale  
is correct

tuck





Vera Venus 30's PJ Top  
UK size 10/12

Lower Front  
cut 1 from complete pattern

centre front- mirror pattern here to make complete pattern piece

Machine or hand roll hem or bind with contrast bias binding