

VeraVenus: Sundress Bodice

Low necked and high neck versions

Bust 35-37"/89-94cms

Waist 28-29"/71-74cms



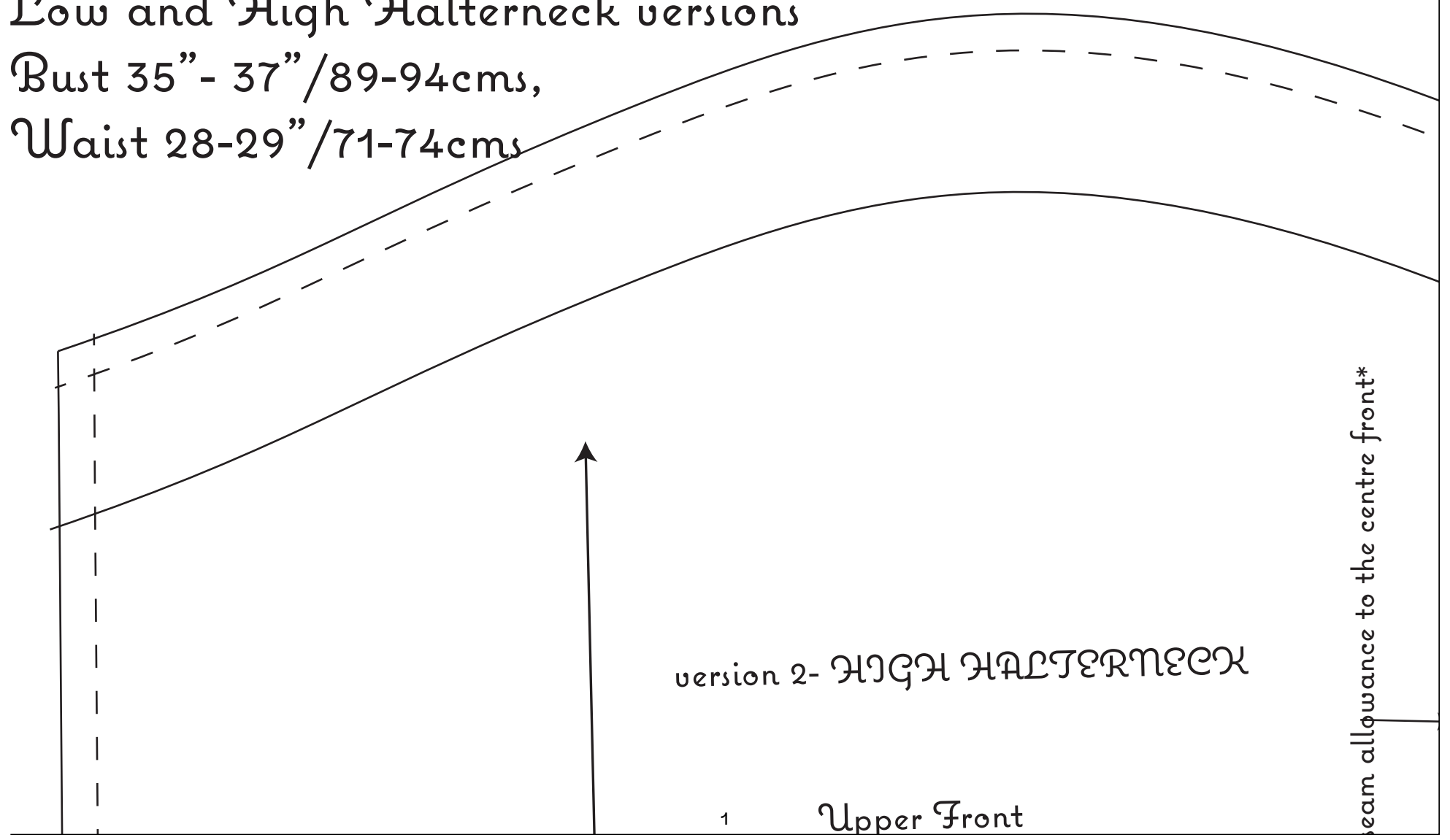
VeraVenus

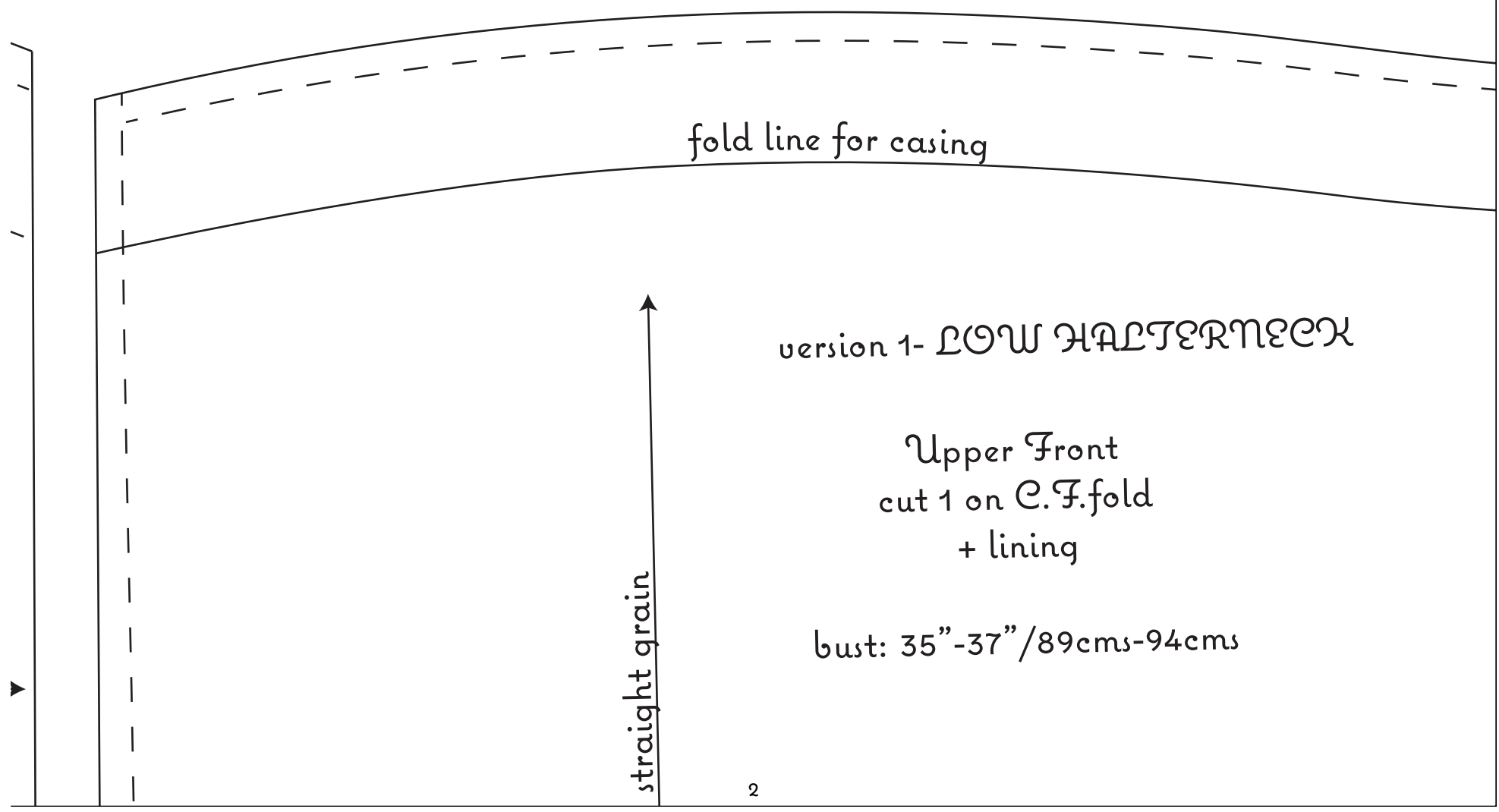
Sun Dress Bodice

Low and High Halterneck versions

Bust 35" - 37" / 89-94cms,

Waist 28-29" / 71-74cms





fold line for casing

version 1- LOW HALTERNECK

Upper Front
cut 1 on C.F. fold
+ lining

bust: 35"-37"/89cms-94cms

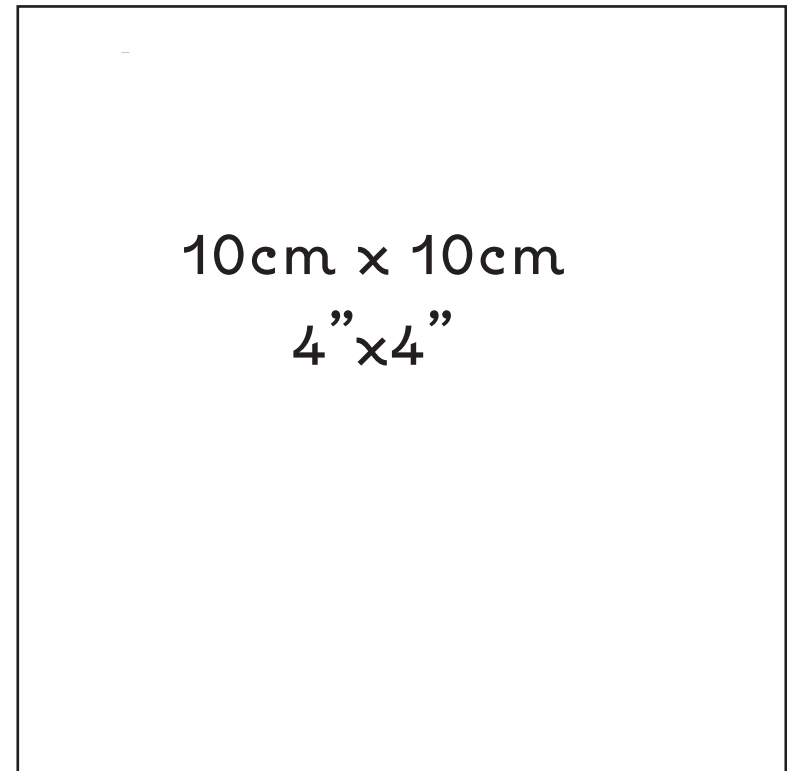
straight grain

IMPORTANT:

this bodice will most certainly need some altering to suit your shape. Please, please trial first!

If you are making a split front opening as in the high front blue version remember to cut the centre fronts with added seam allowances to sew as a seam and not on the fold.

centre front cut on fold



straight grain

cut 1 on C.F. fold
+ lining

bust: 35"-37"/89cms-94cms

*For a split neckline detail
cut the centre front as a
seam and remember to add
seam allowances

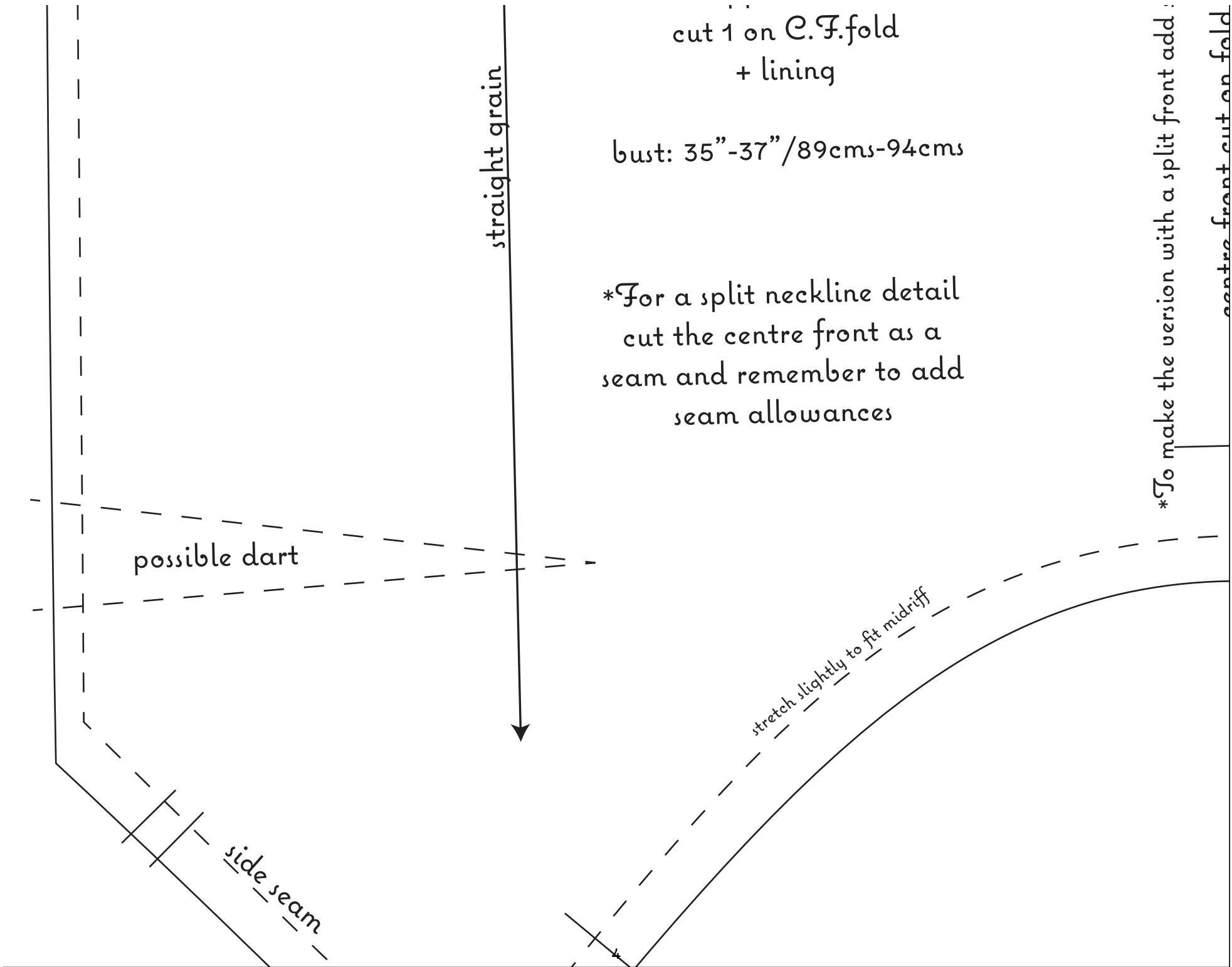
possible dart

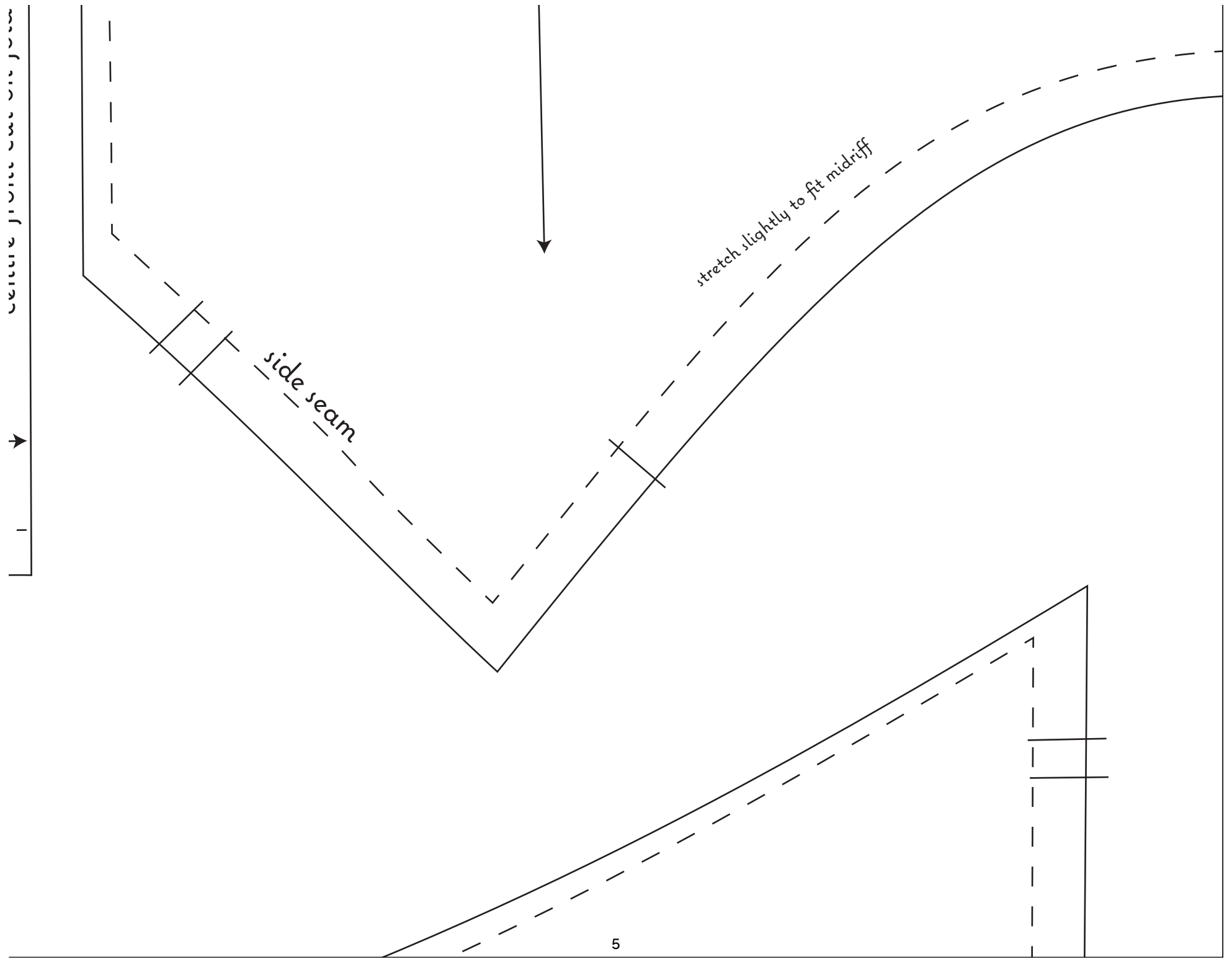
side seam

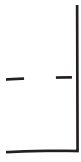
stretch slightly to fit midriff

*To make the version with a split front add:

centre front cut on fold

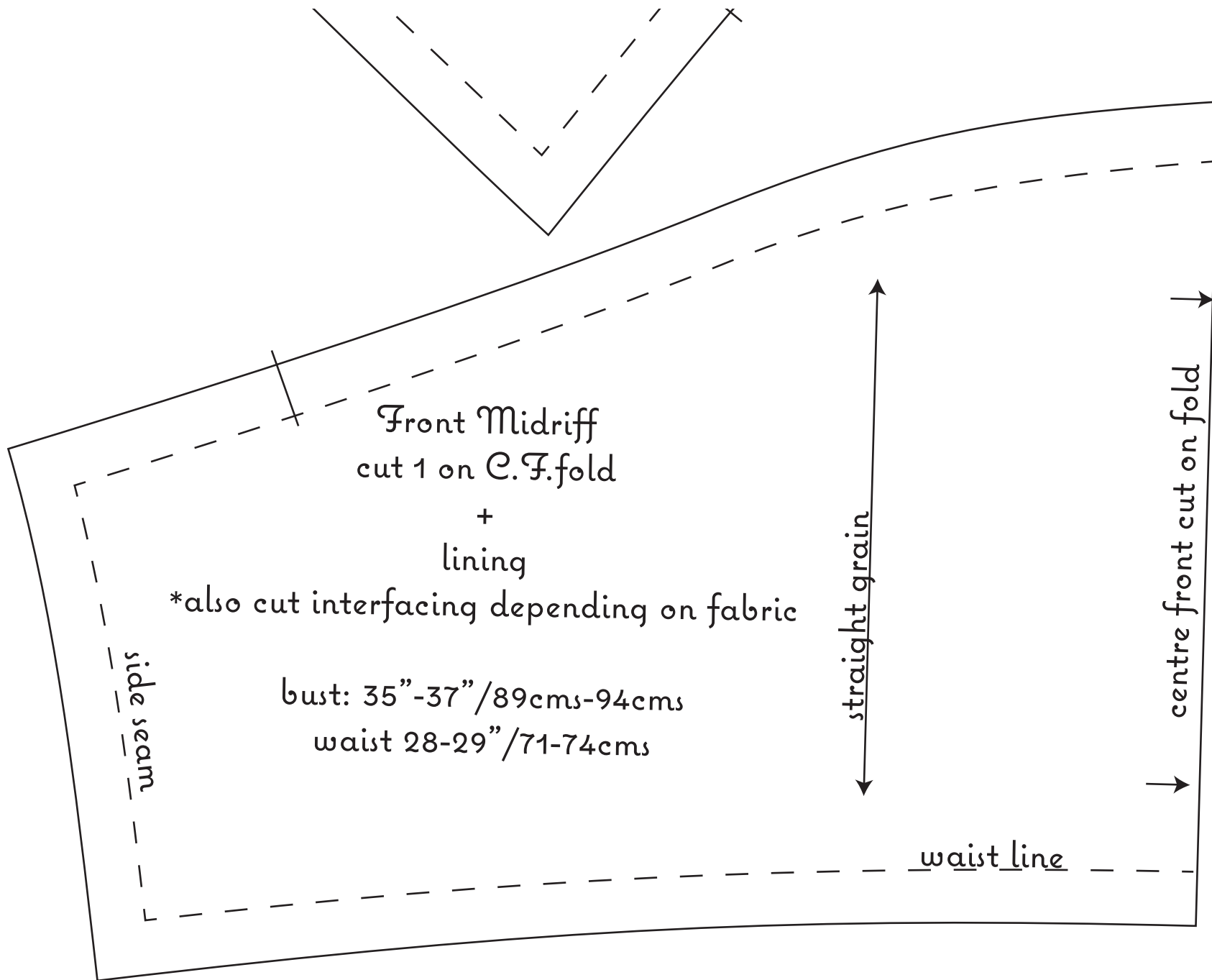


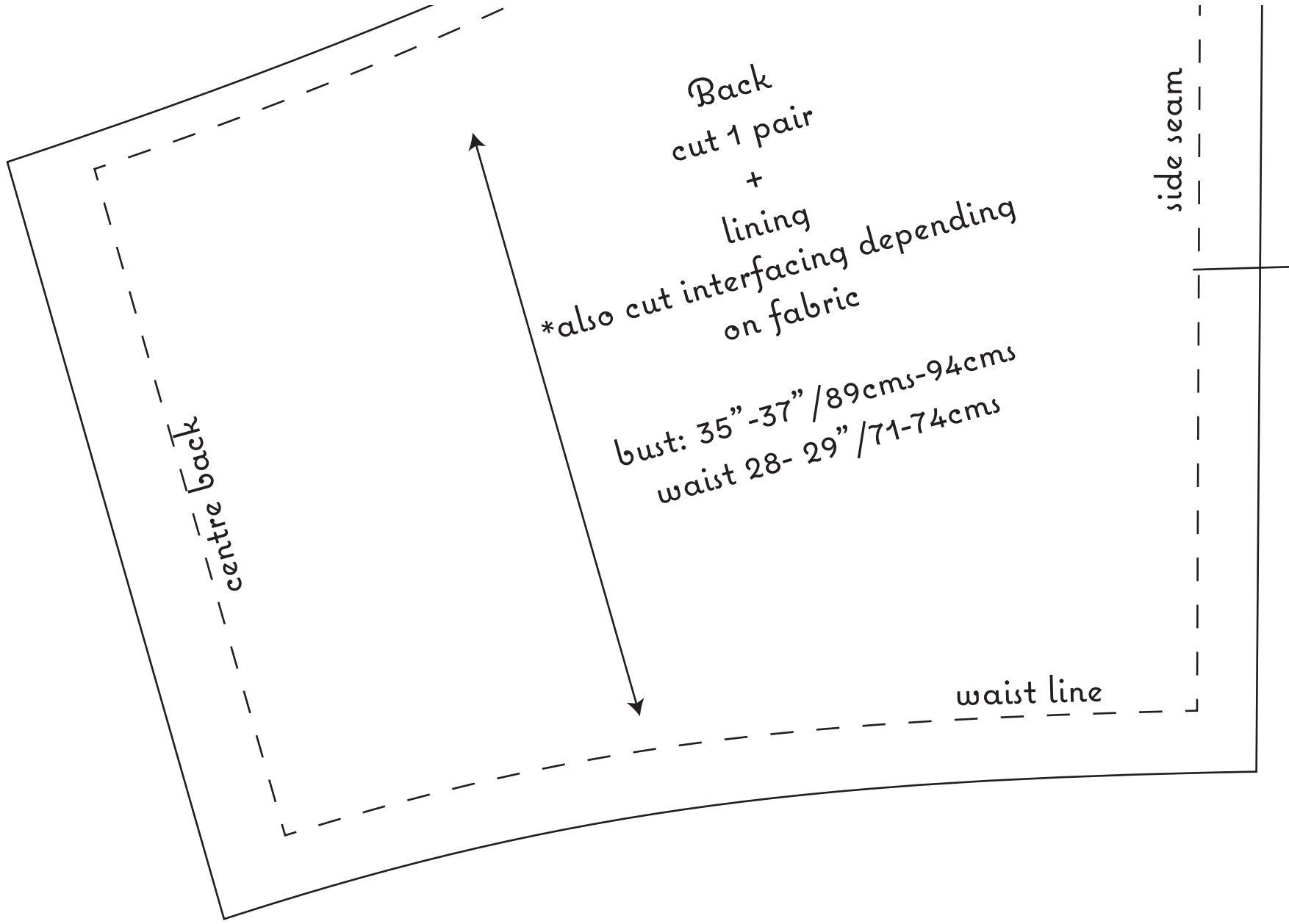




Basic sewing steps:

- 1- Staystitch the top of the Midriff Pin the Upper Front to the Front Midriff with wrong sides together.
The Upper front will need to be stretched slightly between the notches to fit the Midriff.
After sewing press all the seam allowances down into the midriff.
* Split front version- sew the centre fronts closed from the raw waist edge up 8cm (3inches) .
- 2- Sew the completed front to the two Back pieces at the side seams and press them open.
- 3- For the lining repeat steps 1 & 2.
I used self fabric for both my dress linings but any fabric similar to your top fabric will work well too.
- 4- Staystitch the entire top edges just inside the sewing lines. The area around the sides and back can stretch a lot if not handles carefully so the staystitching is very important.
With wrong sides together sew the lining and outer layer together along the .5cm marked seam. Clip the two corners at the top of the fronts diagonally and curved areas as needed and turn the bodice right side out.
Press edges flat then top stitch around the finished edges.
*Split front version- stay stitch and bag-out back, sides and top edges as above.
For the split : you can include in the bagging out steps above or finish after turning the bodice right sides out simply by double turning the seam allowances to the inside and top stitching in place.
- 5- To form the tie channel fold the top edge along the marked line to the inside and topstitch in place.
- 6- Attach your skirt to the outer layer of the bodice. Press seam allowances up into the bodice. Turn the lining seam allowance under and hand sew in place.
- 7- Insert a zip in the centre back (or this can be done after 5 if you prefer then the lining will also hide some of the zipper tape)
- 8- for the tie cut a strip 4cm x 140cm (1½ins x 50ins) or wider if preferred, just remember it needs to pass through the front casing.



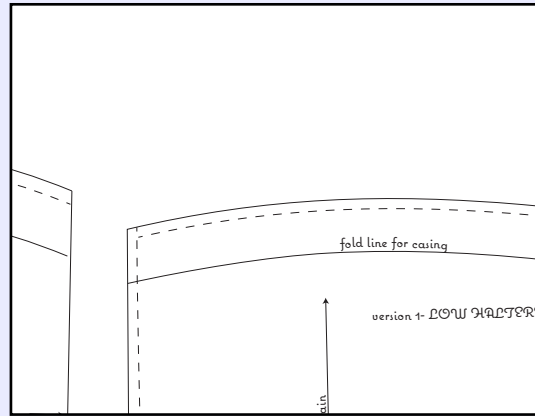
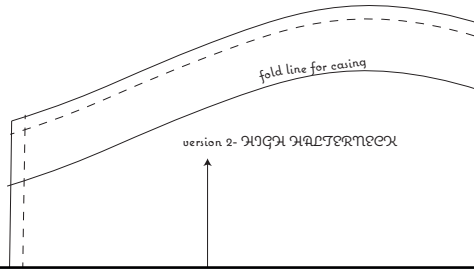


VeraVenus: Sun Dress Bodice

Low and High Halterneck versions

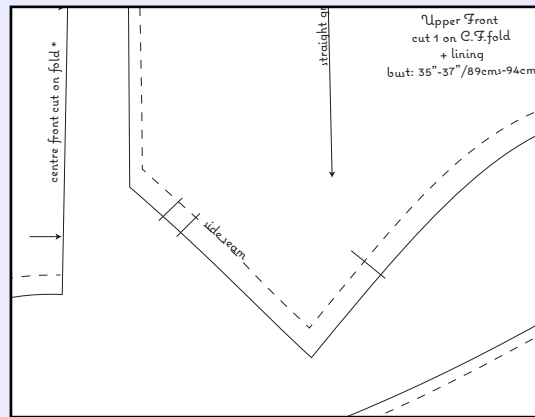
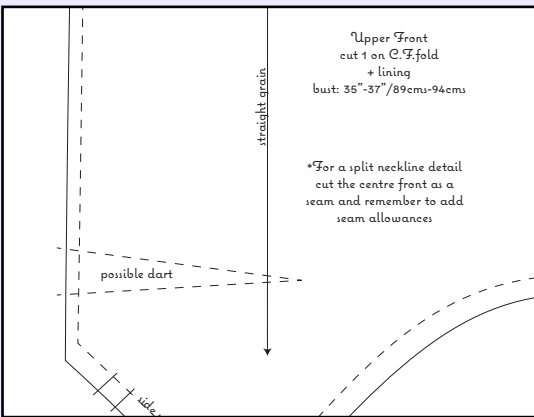
Bust 35" - 37" / 89-94cms,

Waist 28-29" / 71-74cms



IMPORTANT: this bodice will most certainly need some altering to suit your shape. Please, please trial first!

10cm x 10cm
4" x 4"



- Basic sewing:**
1. join the 'Upper Front' to the 'Front Midriff'. Press the seam allowances down into the midriff.
 2. join the completed front to the two 'Back' pieces at the side seams and press open.
 3. if you are lining repeat 1 & 2 for the lining, also use self fabric for both my dress linings.
 4. with wrong sides of the lining and outer layer together sew along the 3cm marked seam. Clip corners, and curves as needed and turn right side out. Press edges then edge stitch, top stitch whatever you like for the look you want.
 5. fold the top edge along the marked line to the inside to make the tie casing and topstitch in place.
 6. attach skirt to the outer layer of the bodice. Press seam allowances up into the bodice. Clean finish with the lining to hide the seam allowances.
 7. Insert a zip in the centre back (or this can be done after 6 if you prefer then the lining will also hide some of the upper top).
 8. For the tie cut a strip 4cm x 140cm (1 1/2/60u x 50ins) or wider if preferred, just remember it needs to pass through the front casing.

