

ՏԵՎ ՄԵՐԱՎԵՆՈՍ

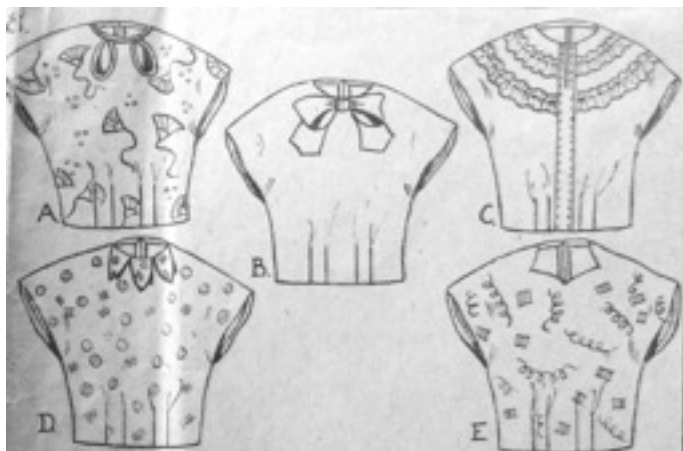
“A modern make on vintage style”
VeraVenus.com

A simple pull-over magyar blouse.



Definition: sleeves cut in one with the body, a.k.a. kimono blouse. The style seems to have spanned the 1920s through to the '50s. The original Style pattern I have looks to be late 40's. It is in a tiny size so I redrafted it and share my new pattern here with you.

Eight tucks from the hem to the waist give it shape and reduce bulk if worn tucked in but it also looks nice worn loose and out. The split in the centre back closes with a button and loop at the neck or the neck bindings could be made long enough to tie. Looks nice with or without shoulder pads depending on how 'vintage' a look is aimed for. Below are some neckline suggestions from the original pattern:



- * The pdf pattern now has 3 keyhole openings in the front instead of 2.
- ** I strongly suggest making a muslin/toile/practice blouse to check placement of keyholes on yourself and to make sure you can put the blouse on over your head. and of course you may wish to change the blouse length etc.

All seam allowances are shown on the pattern (1cm or .5cm).

The actual pattern measurements are written on the pattern itself.

It is sized to fit body measurements of:

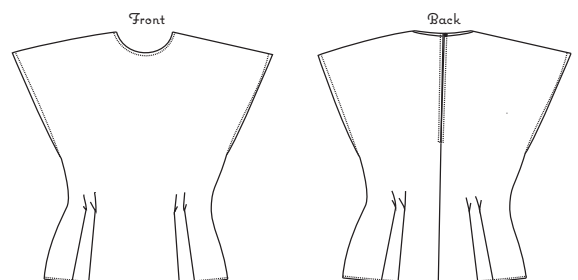
bust- 89/93 cm (35"/36 1/2")

waist- 74/78 cm (29"/ 30 3/4")

hip (10cm below waist)- 92/96 cm (36"/38")

(allowing approximately 8-10cm of ease in each area)

back waist length- 40 cm (15 3/4")



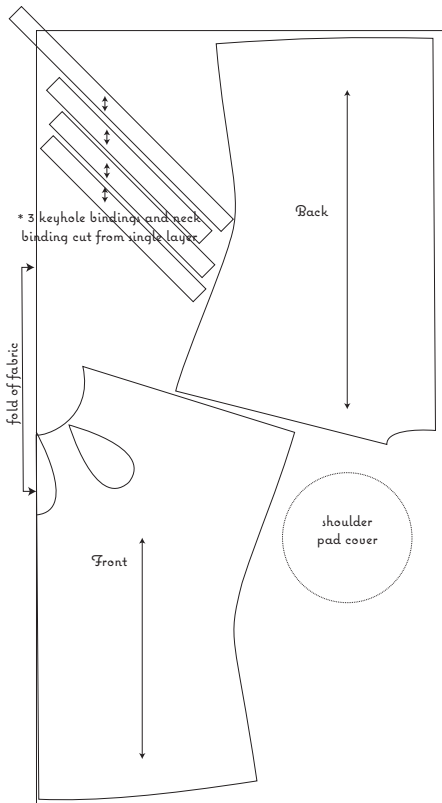
The pattern can be graded up or down by following the [Threads Grading guide](#)

ՏԵՎ ՎԵՐԱՎԵՆՈՍ

“A modern make on vintage style”
VeraVenus.com

Fabric requirements:

- .75m of 147cm wide fabric
- 1.10m of 114cm wide fabric



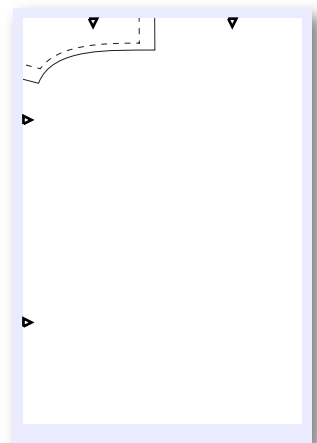
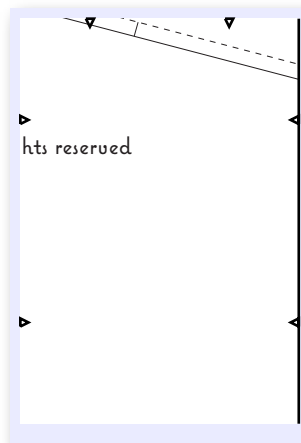
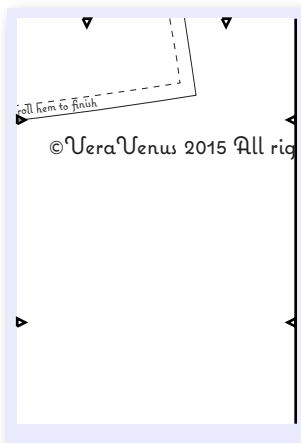
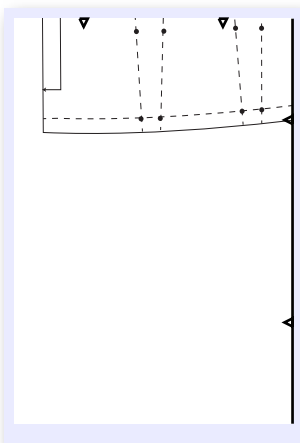
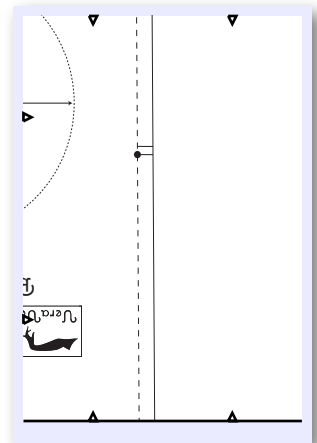
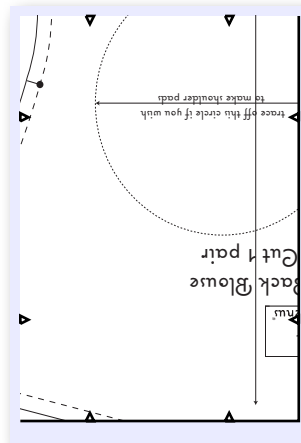
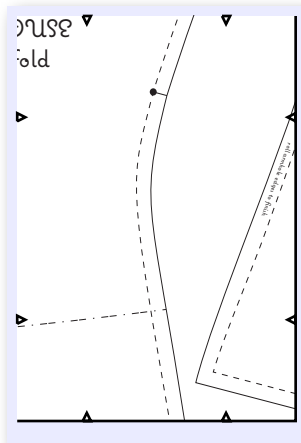
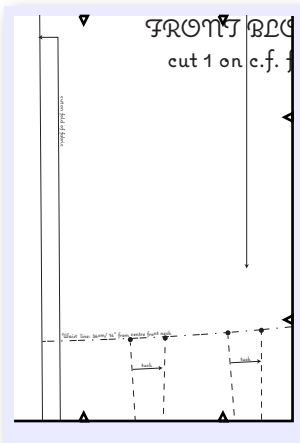
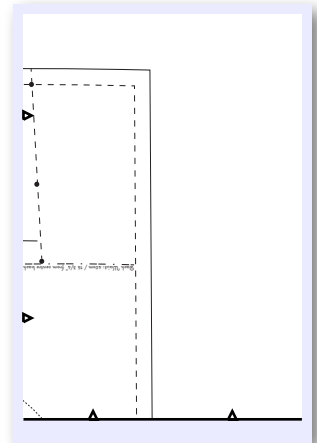
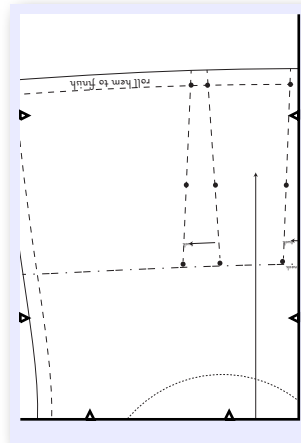
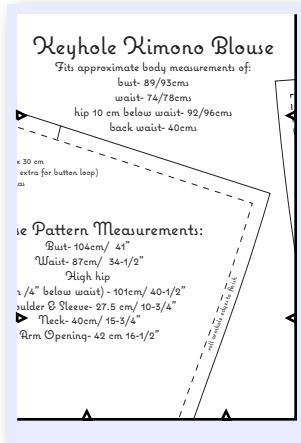
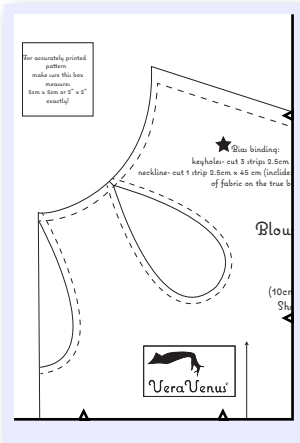
Basic sewing steps:

Cut out all pieces and mark the tuck sewing lines on the wrong side of the fabric.

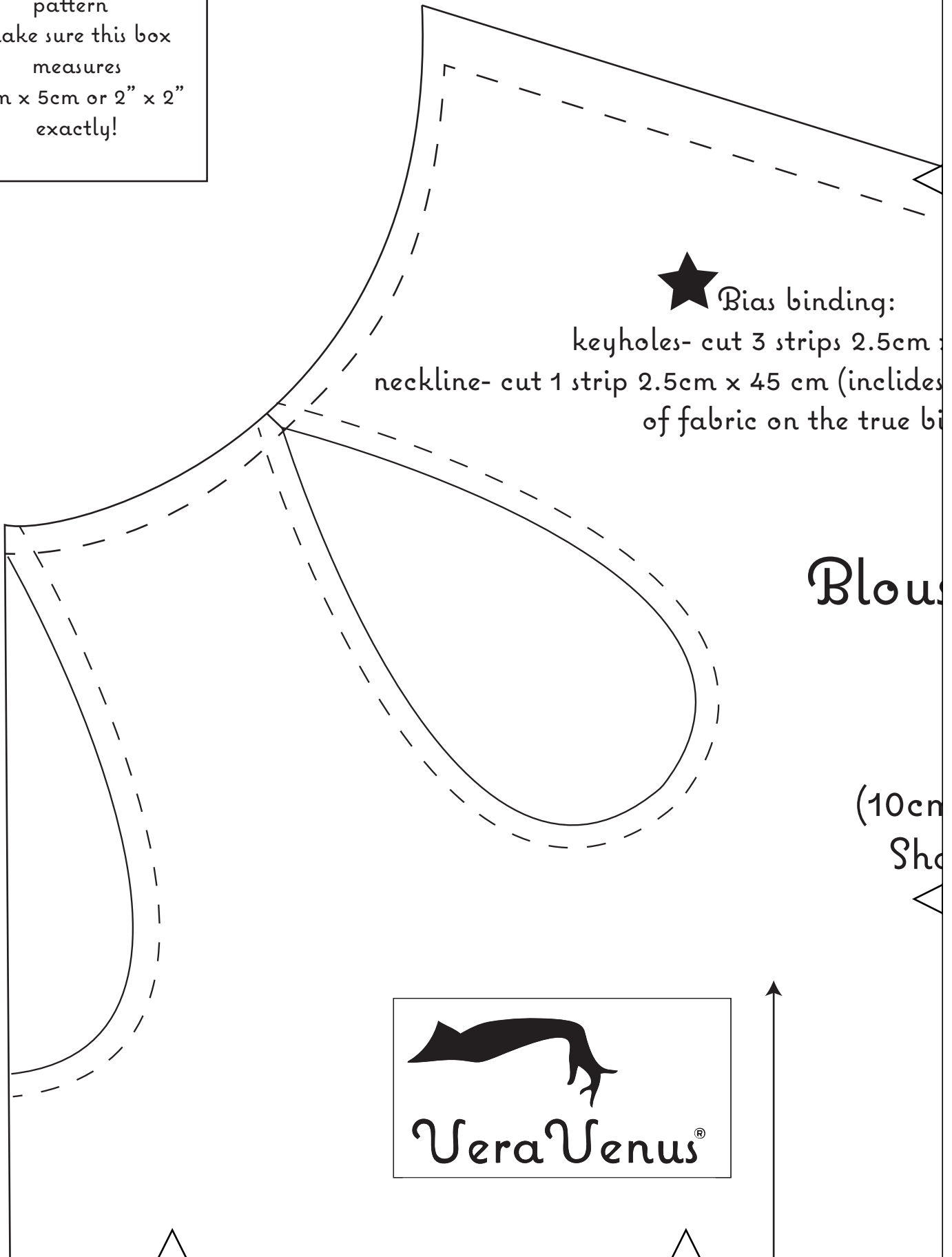
1. Sew all tucks in place and press towards centre of blouse.
2. Stay stitch the keyhole openings and bind from the outside with self bias strips. Fold the bindings to the inside over the cut keyhole edges. Trim the inside edge of the binding narrower if needed and hand finish on the inside. (Either turn edges under and slip stitch or pink the raw edge and stab stitch or make tiny back stitches 'in the ditch' from the right side of the keyholes, photo below showing this from the inside)



3. Join the shoulder seams and then the centre back seam from the hem up to the dot by the double marks.
4. Turn and press the seam allowance of the back opening under .5cm and .5cm again and finish by hand or machine.
5. Bind the neckline with the longest bias strip, again from the outside, press over to the inside, trim as needed and hand finish on the inside. The binding can be carried past the c.b. and used to form a button loop or finished flush with the opening and a small hook and eye used to close the neck.
6. Sew the side seams closed from the hem up to the armhole dots.
7. The armhole is hemmed with a double .5cm roll as is the hem of the blouse.



For accurately printed pattern
make sure this box
measures
5cm x 5cm or 2" x 2"
exactly!



★ Bias binding:

keyholes- cut 3 strips 2.5cm x 45 cm
neckline- cut 1 strip 2.5cm x 45 cm (includes
of fabric on the true bias)

Blouse

(10cm
Shoulder)



Keyhole Kimono Blouse

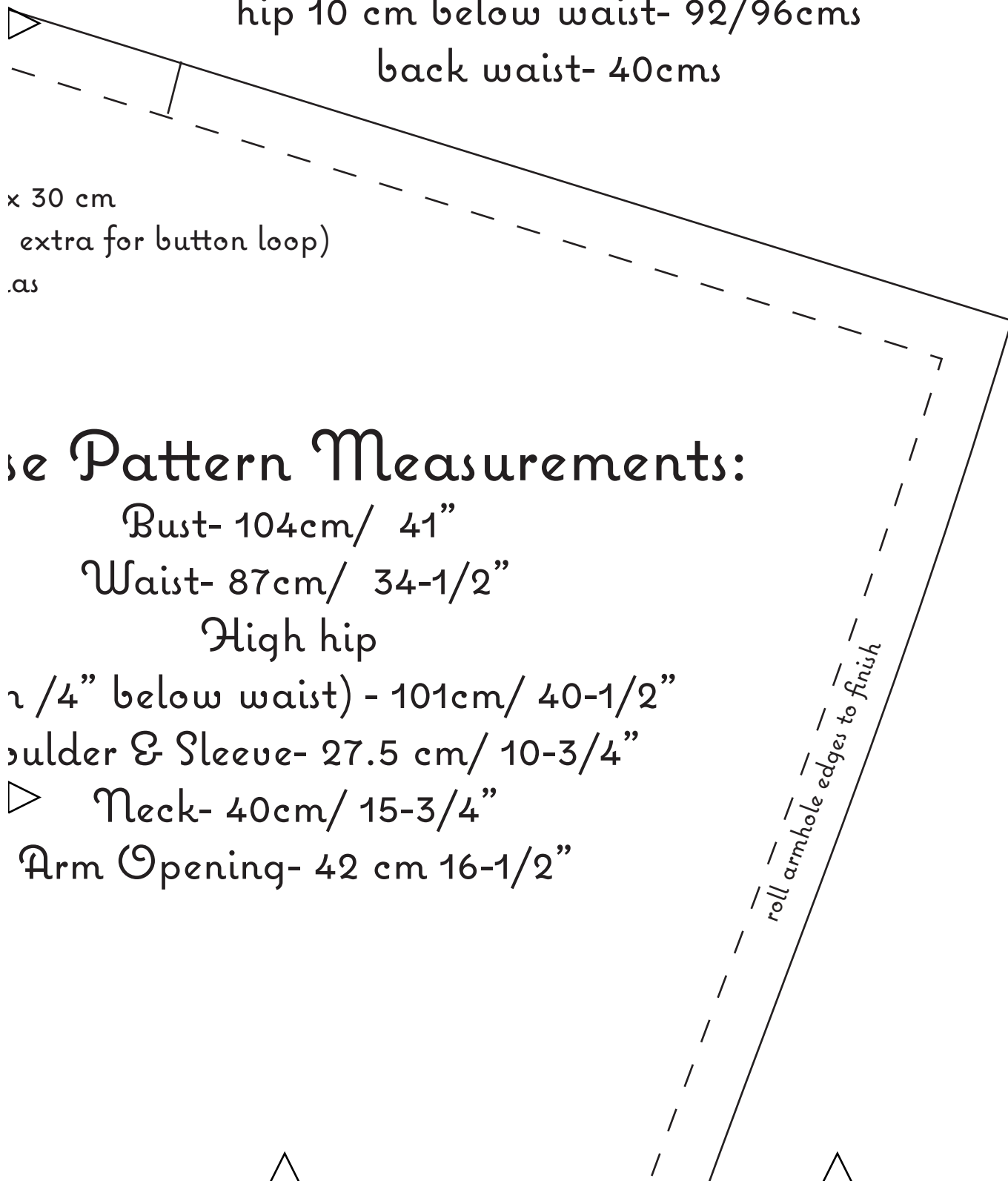
Fits approximate body measurements of:

bust- 89/93cms

waist- 74/78cms

hip 10 cm below waist- 92/96cms

back waist- 40cms



x 30 cm

(extra for button loop)

as

Pattern Measurements:

Bust- 104cm/ 41"

Waist- 87cm/ 34-1/2"

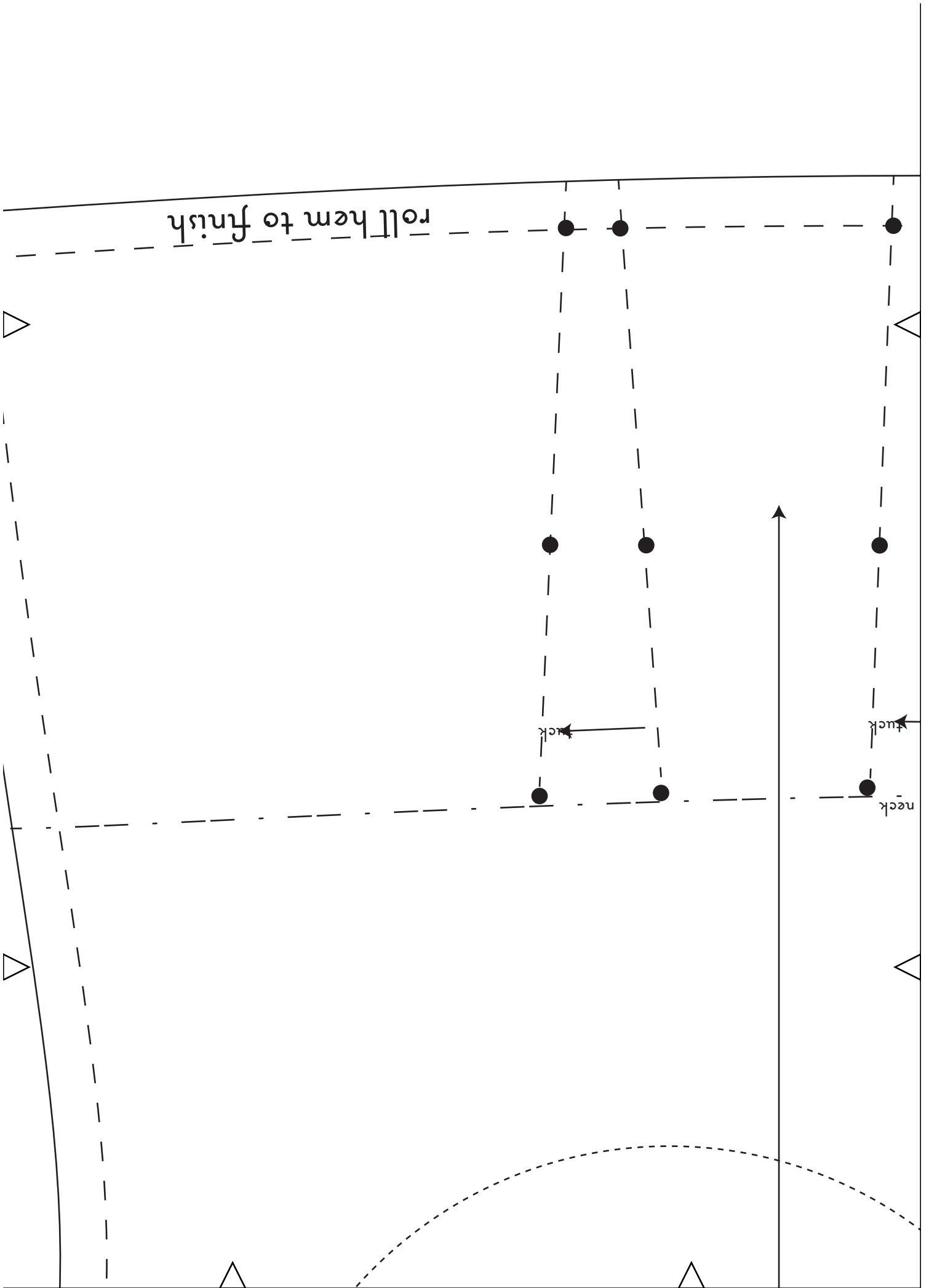
High hip

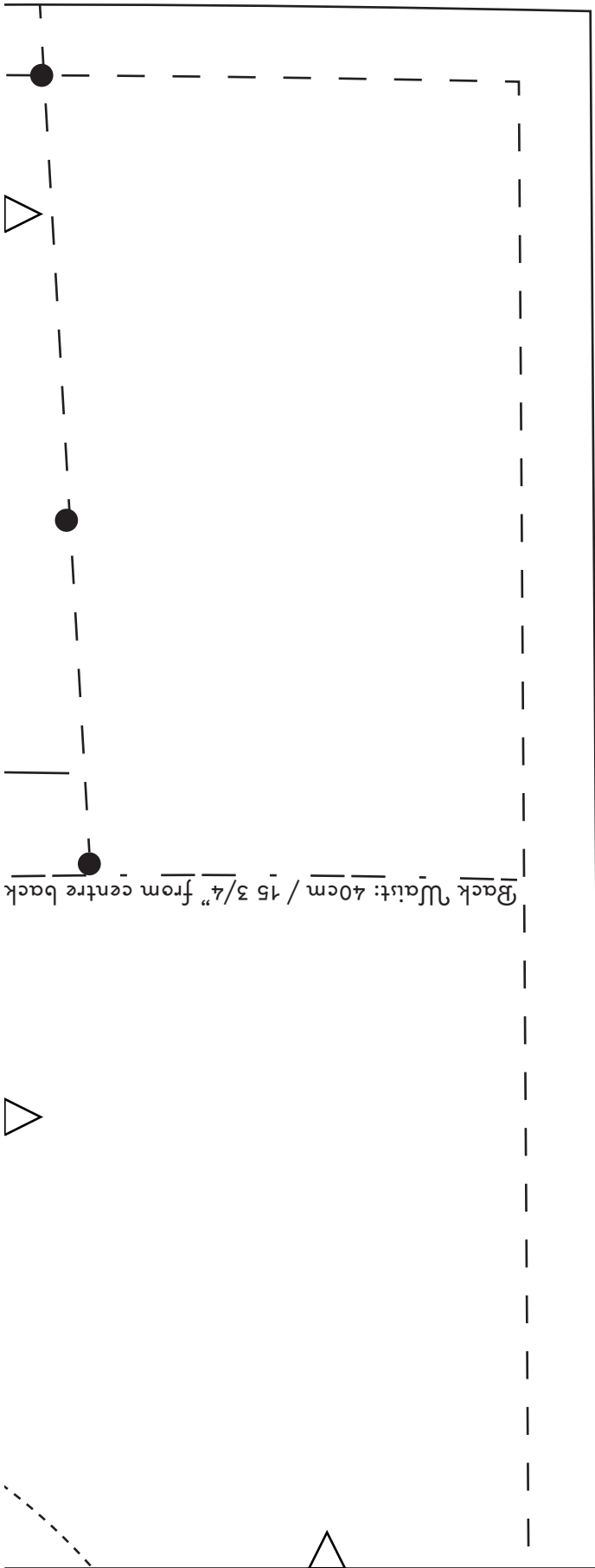
(2 1/4" below waist) - 101cm/ 40-1/2"

Shoulder & Sleeve- 27.5 cm/ 10-3/4"

Neck- 40cm/ 15-3/4"

Arm Opening- 42 cm 16-1/2"





FRONT BLEUSE

cut 1 on c.f. f

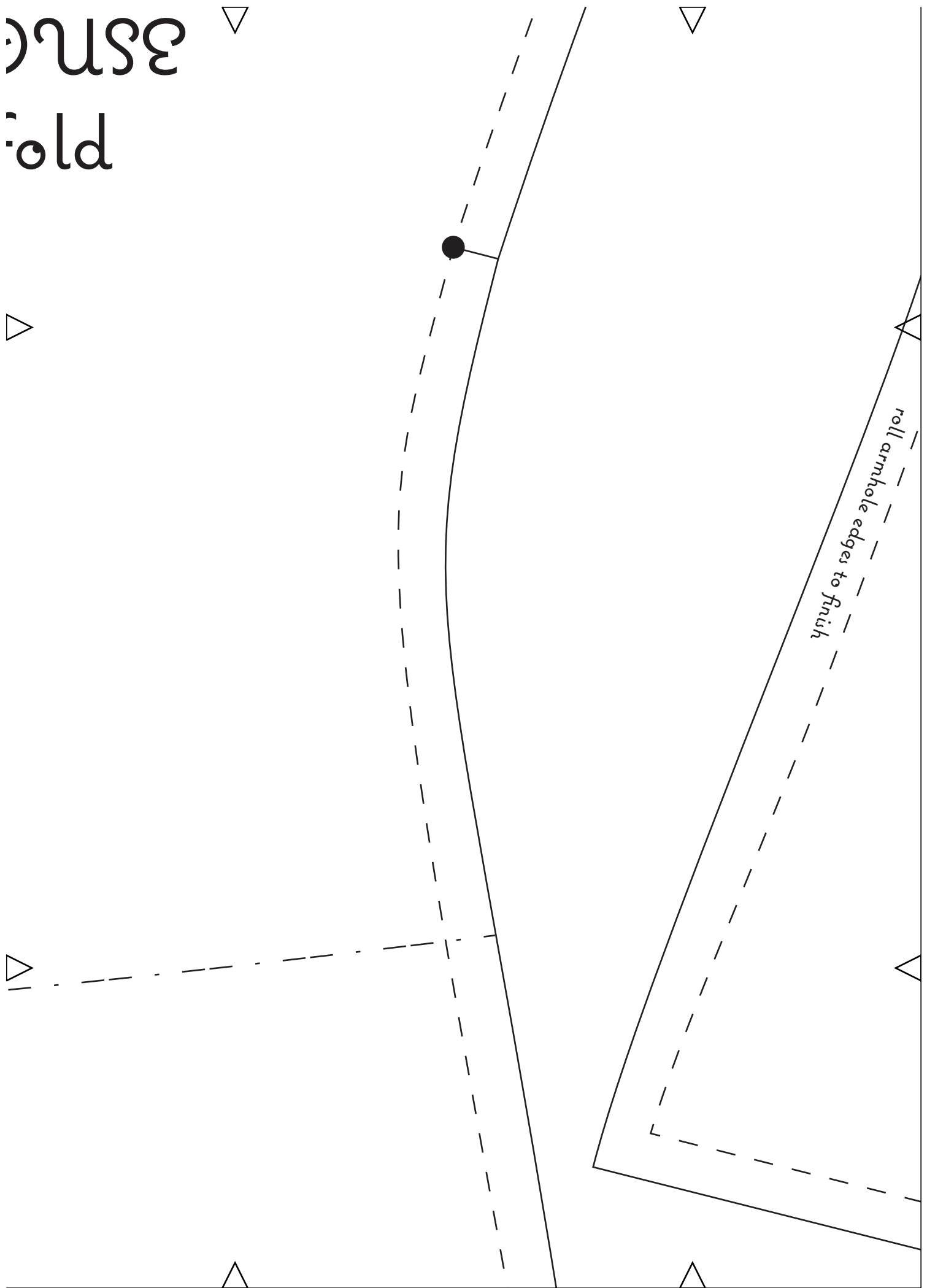
cut on fold of fabric

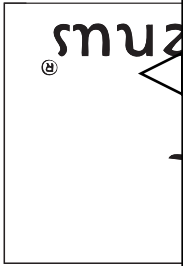
Waist line: 36cm/ 14" from centre front neck

tuck

tuck

ප්‍රථම
පියවර

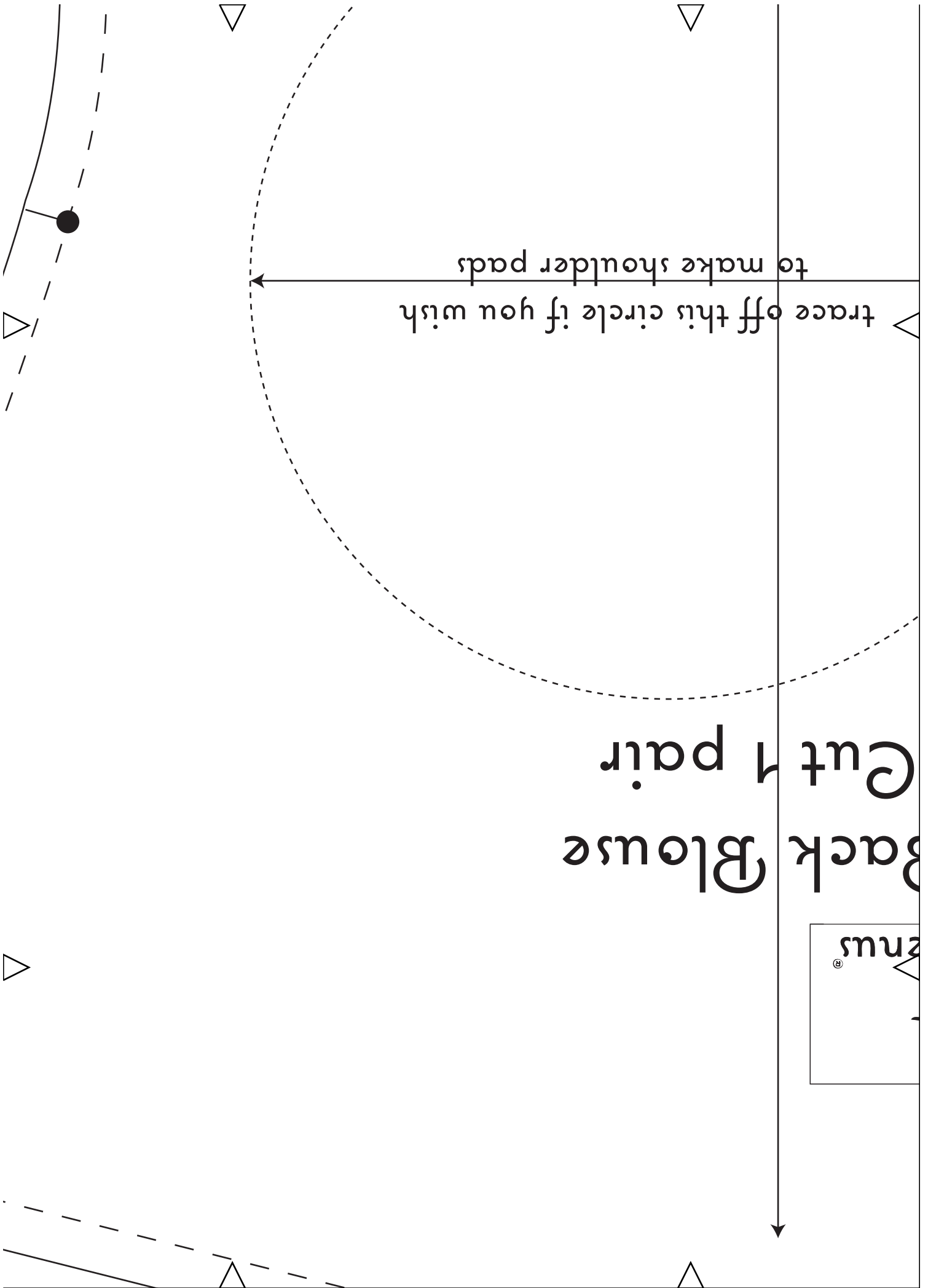


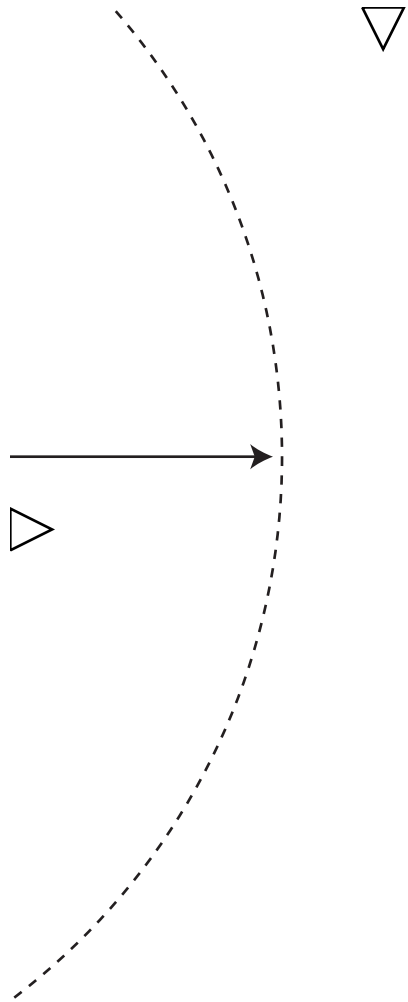


Back Blouse Cut 1 pair

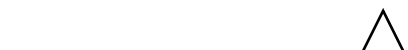
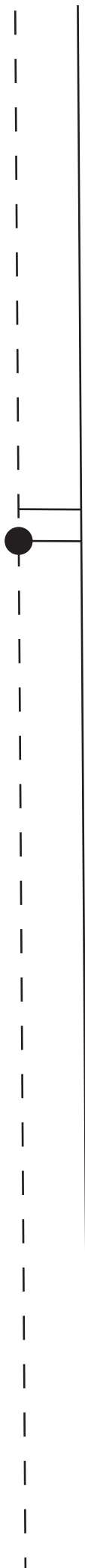
trace off this circle if you wish

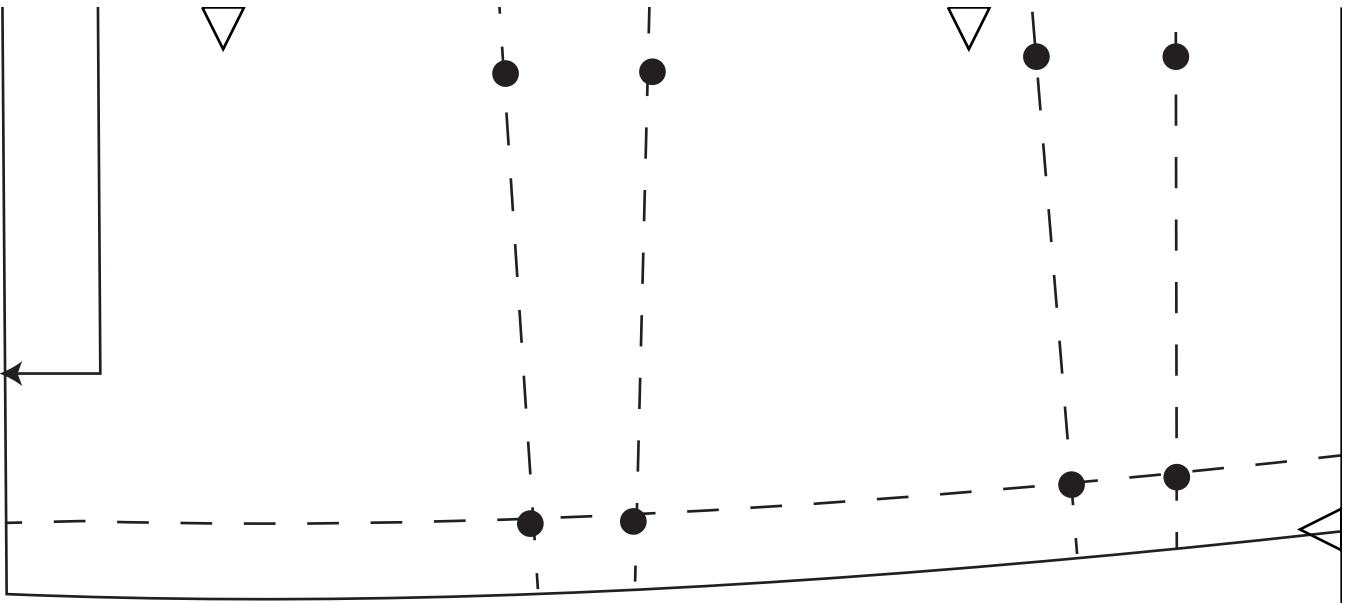
to make shoulder pads

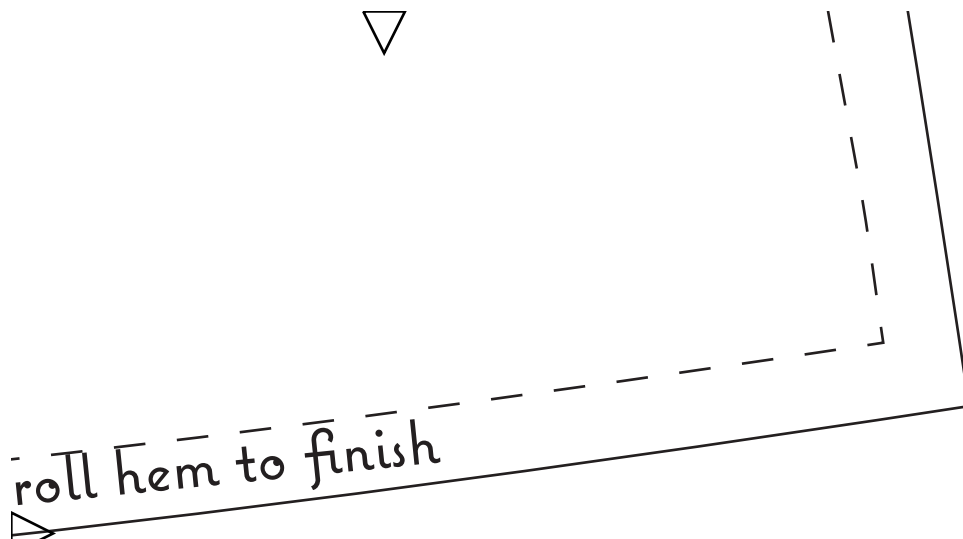




Ի

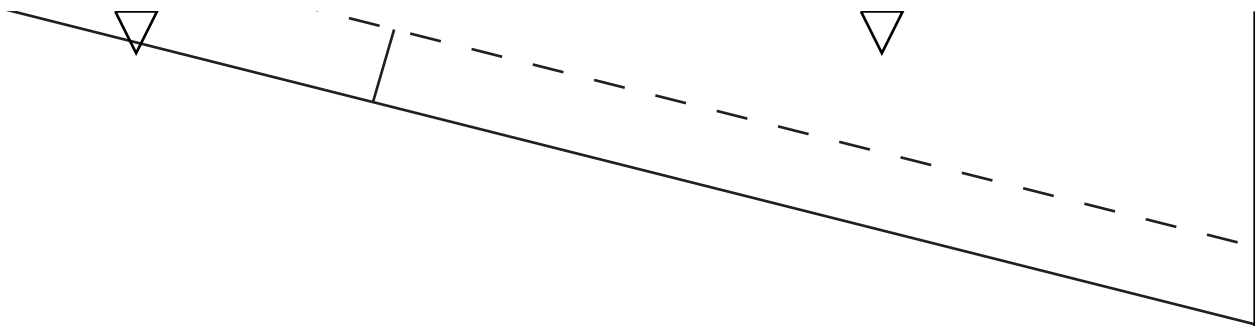






roll hem to finish

© Vera Venus 2015 All rights reserved



hts reserved



