

Sweetheart Halter Dress



A halter necked dress with centre front tucks and french darts in the bodice to give shape and a four gore half circle skirt. This is a completely new pattern that I draped and flat drafted based on a 1950s Simplicity illustration after I lost the Ebay bidding on a vintage version. It is ideal for use with stripes or checks and with careful cutting out interesting effects can be achieved. Check my website to see 2 striped versions and a gingham one too. Of course it works just as well with prints or solid colours. It would make a cocktail dress with a pencil skirt instead of the 1/2 circle... or a cute playsuit with little shorts attached. Have a look at my [Pencil Skirt](#) and [French Knicker](#) tutorials if either of those ideas appeal.

Dress Pattern cut to fit figure of:
91cm / 36" bust (D-DD cup)
76cm / 30" under-bust
74cm / 29" waist

Actual pattern piece measurements are written on the pattern pieces.



** I STRONGLY advise you to make a muslin of the bodice first to check and adjust the fit on yourself and also do a layout of pattern pieces to check the amount of fabric you need to buy before cutting and sewing! The amounts I give below are only approximate and depend on width of fabric, length of skirt etc.**

Fabric : Woven fabrics only- medium to heavier weight cottons, silk shantung, taffeta, brocades etc. Lighter weight fabrics can be used but will probably benefit from a medium weight interfacing in the bodice and a skirt lining as well.

- Bodice with 1/2 circle skirt: approx. 2 1/2 metres 140cm/ 50" wide woven fabrics.
- Bodice lining and light weight iron on interfacing: approx. 1/2 metre each of 114cm / 45" fabric
- 12" zip for centre back opening
- buttons or hooks and bars for neck strap

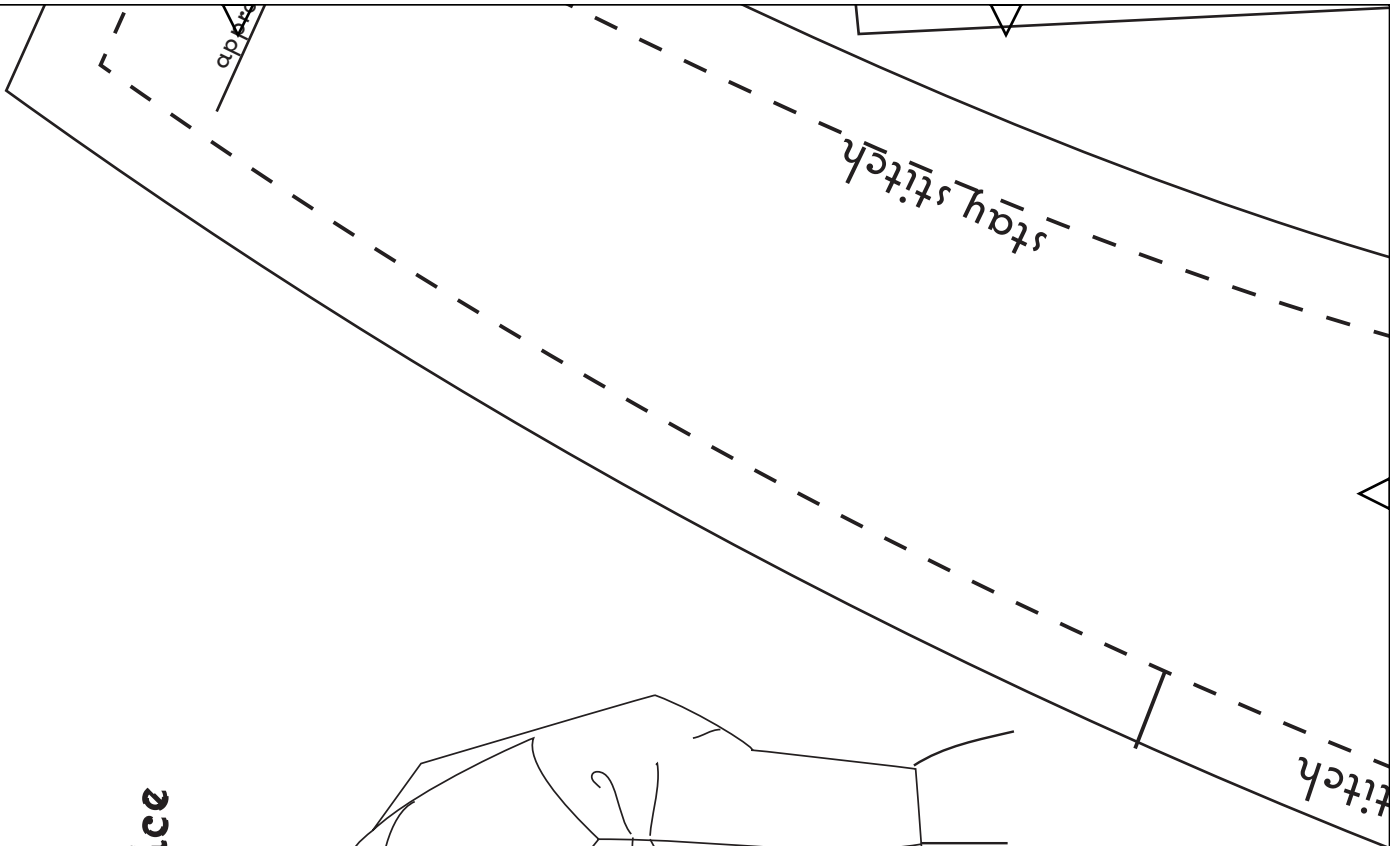
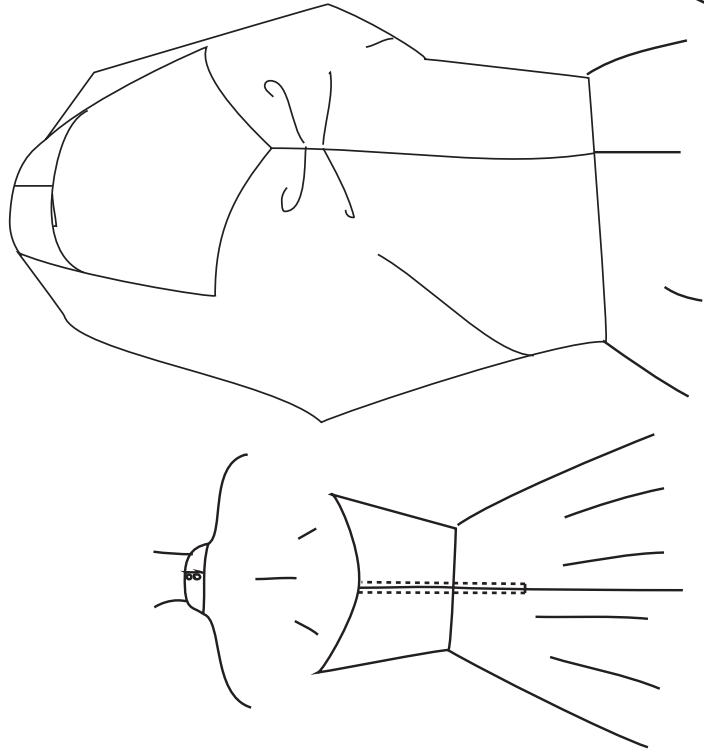
Basic sewing instructions:

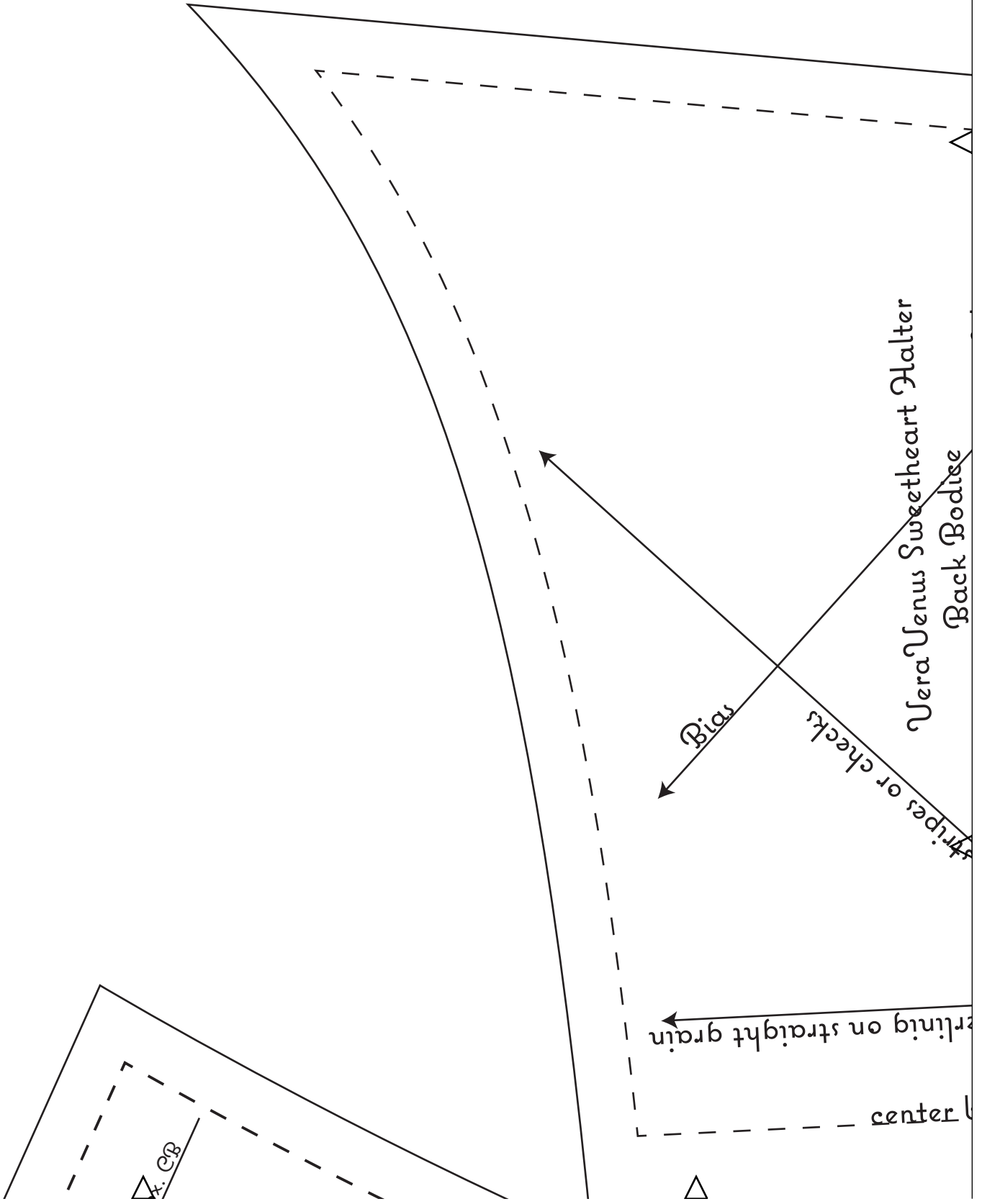
- 1-cut all bodice layers, paying attention to grain directions.
- 2-fuse interfacing to wrong side of outer fabric layer. Stay stitch where marked on pattern.
- 3- pin C.F. pleats working from the outside of the fabric- follow the direction of the arrows.
- 4-sew darts closed, press seam allowance up.
- 5-join C.F.s matching pleats carefully. Sew from waist to small dot only and back stitch.Press open. 6-join side seams, press open.
- 7-Repeat steps 1-6 for lining. 8- With rights sides together pin and sew the lining to outer fabric bodice. Match side seams and neck notch- es. Edge stitch the seam allowances onto the lining across the top back as far up the outer side of the neck strap as you can . Also edge stitch across the front neck and up into the strap.
- 9- After sewing trim 4 corners of neck strap, slash into 2 corners of front neck, trim other seam allowances as needed and turn right side out. Use a knitting needle or something similar to poke out the neck strap corners. Press flat.
- 10- Join the skirt to the outer bodice only. Press the waist seam allowances up into the bodice. Trim as needed.
- 11- sew a zipper into the centre back. Clean finish the zip edges and waist by turning back the lining edges and hand sewing over the seam allowance.
- 12- strap- finish with hooks and bars or a couple of buttons and button holes.
- 13- Hem can be finished by a narrow .5 then 1 cm turned hem or with bias binding.

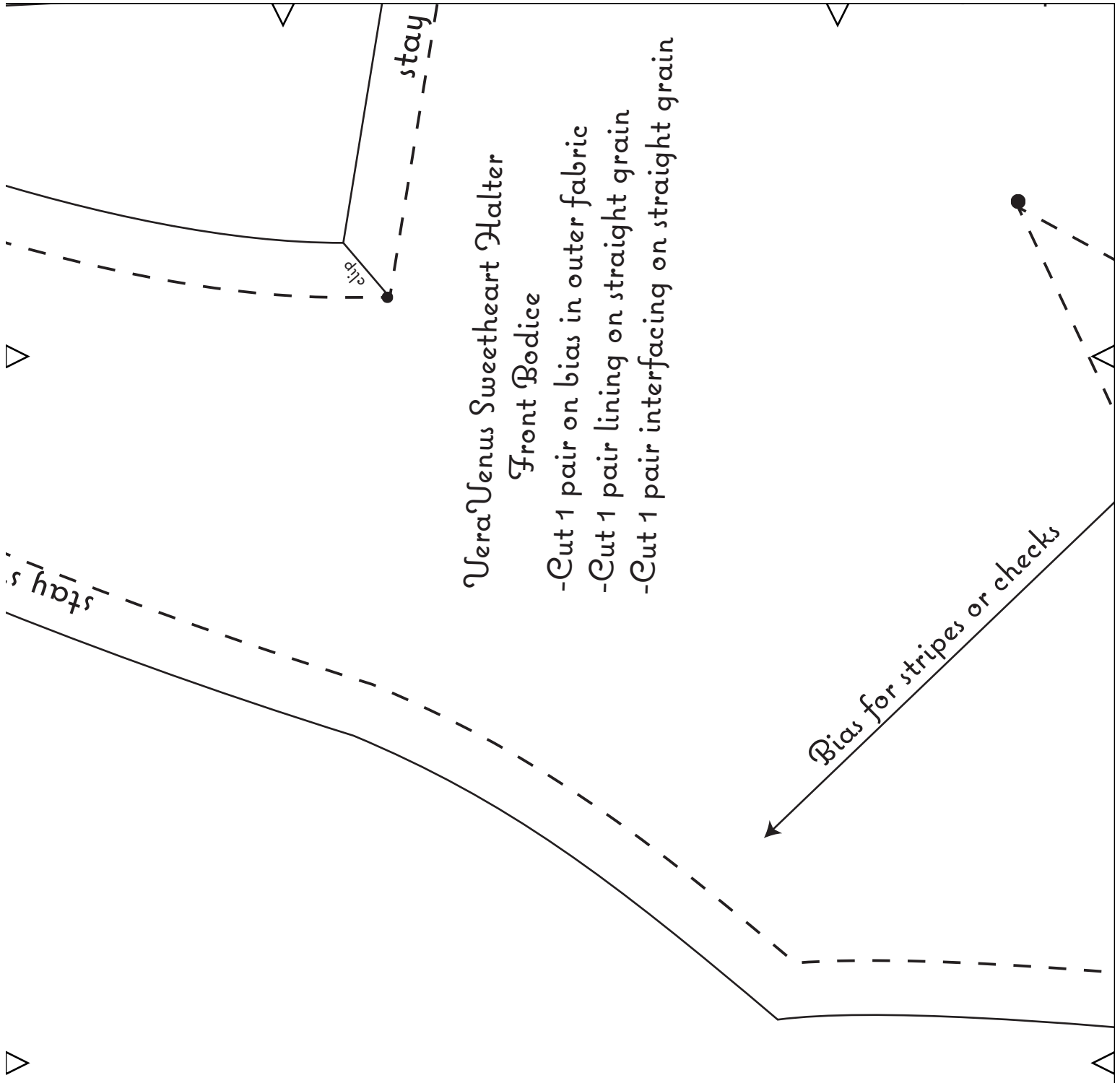
TIP -If your fabric is a solid colour or all-over print the top bodice layer can be cut on the straight grain instead of on the bias. You then may wish to leave out the light weight iron-on interfacing as well since the main point of that is to control the bias layer.

Happy Sewing, -Jeanne

Vera Venus
Sweetheart Halter Bodice
July 2015







VeraVenus Sweetheart Halter
Front Bodice

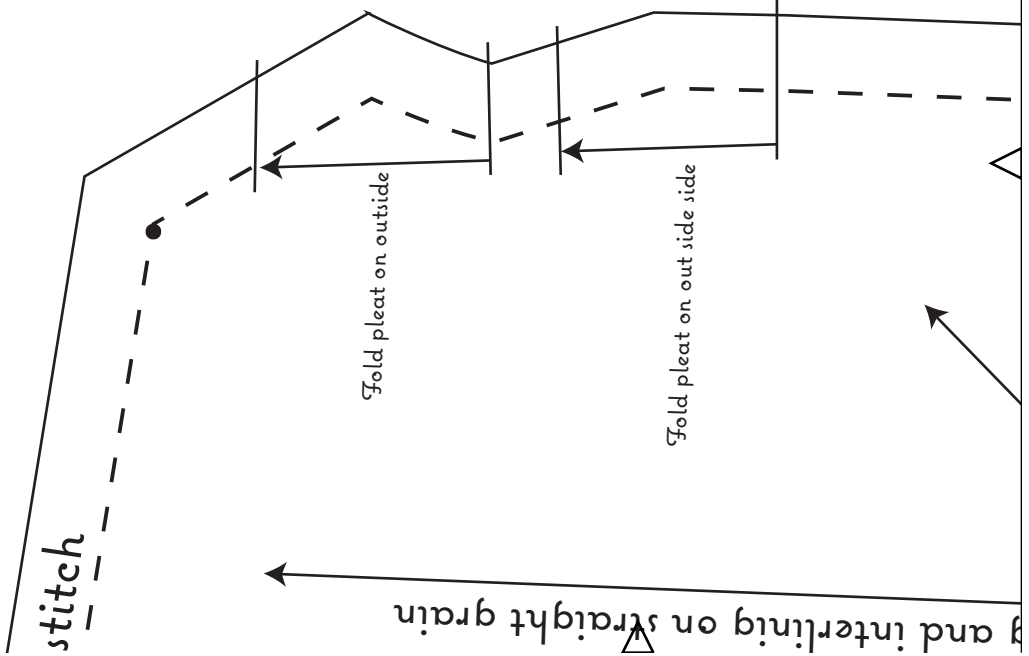
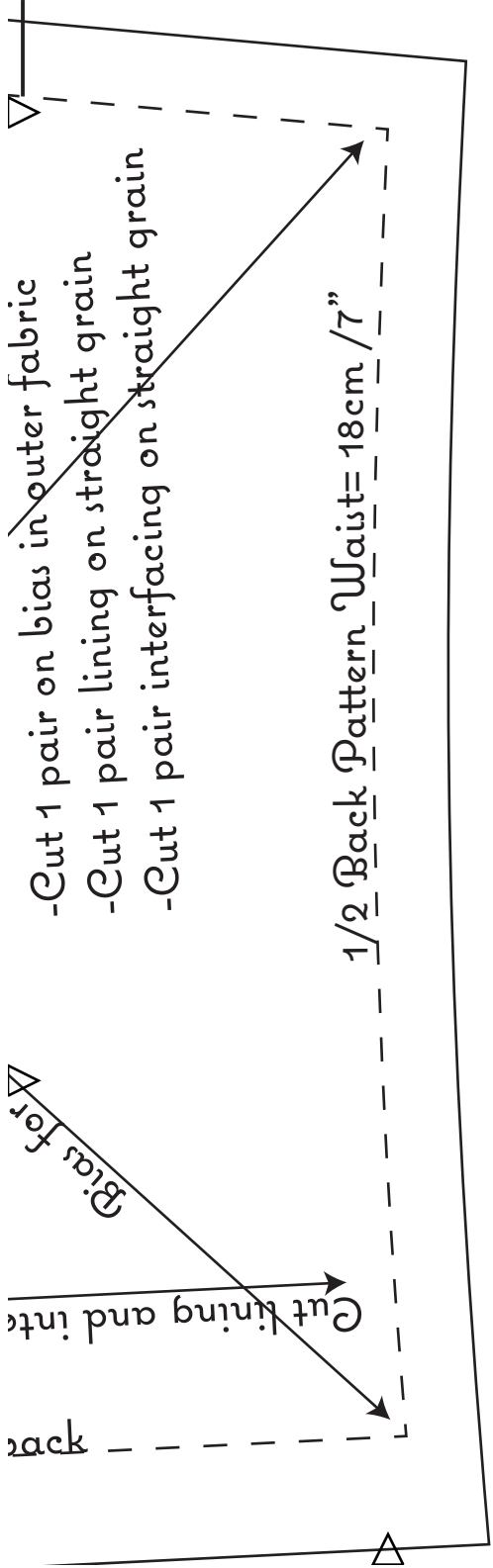
- Cut 1 pair on bias in outer fabric
- Cut 1 pair lining on straight grain
- Cut 1 pair interfacing on straight grain

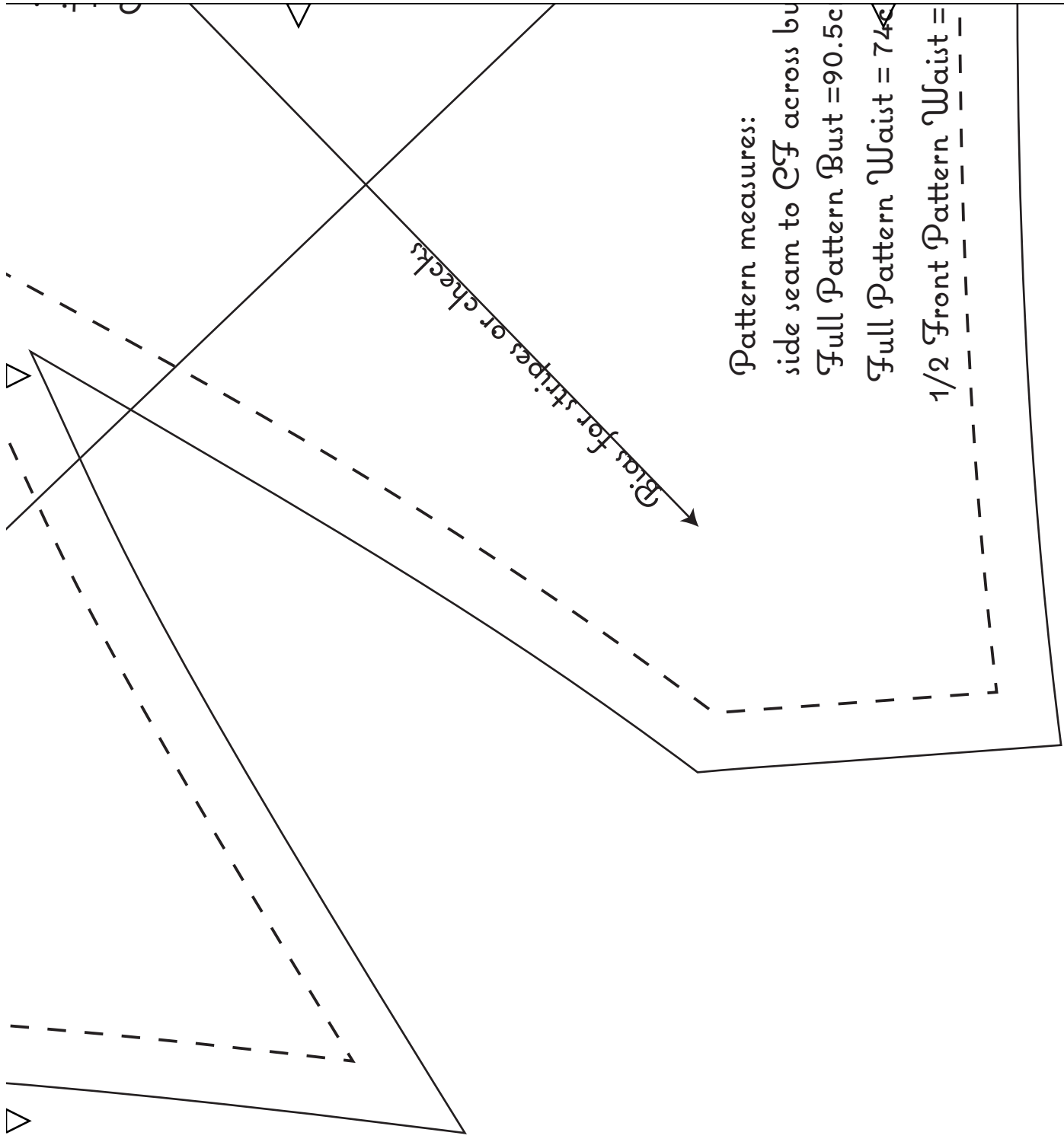
Bias for stripes or checks

stay s

clip

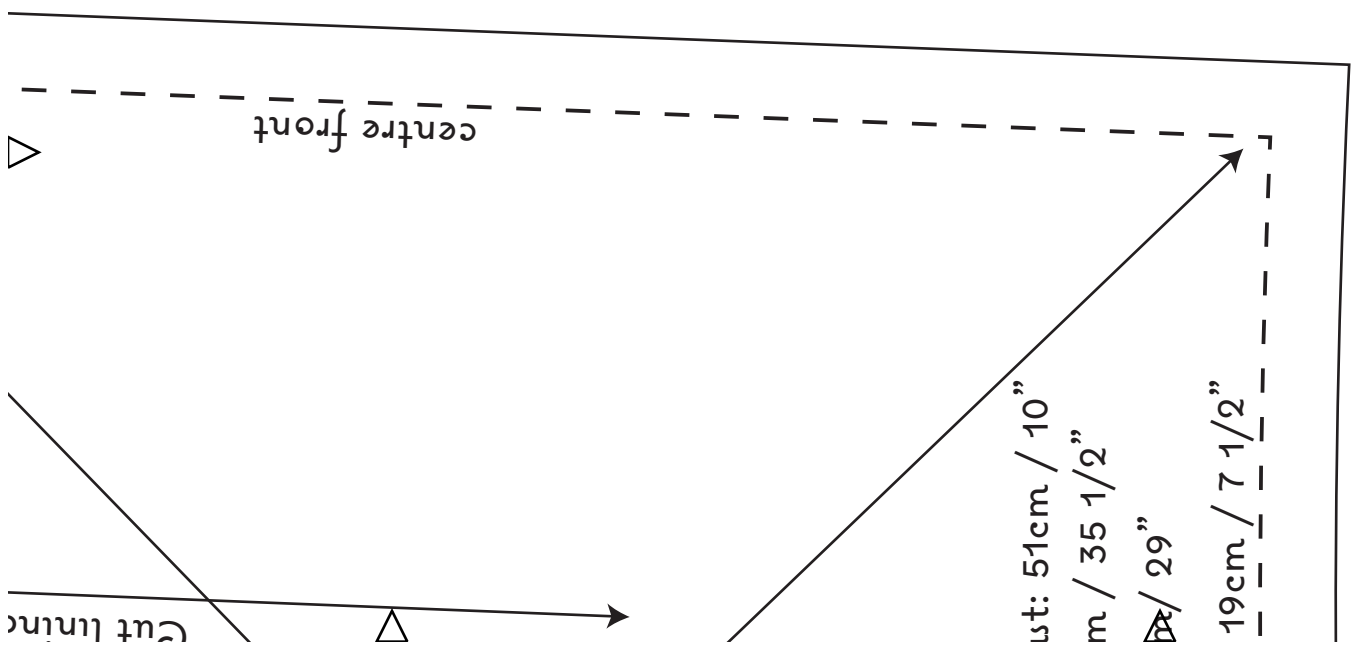
stay





Bias for stripes or checks

Pattern measures:
side seam to CF across bu
Full Pattern Bust = 90.5c
Full Pattern Waist = 74c
1/2 Front Pattern Waist =



centre front

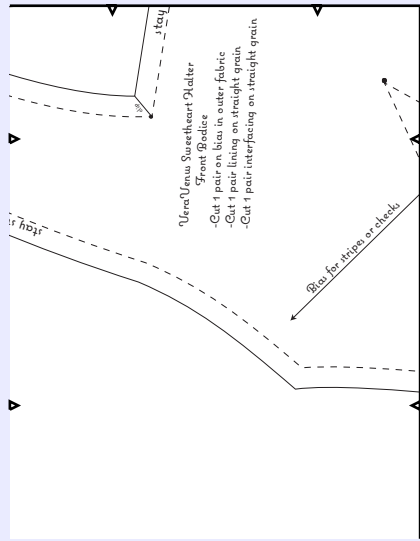
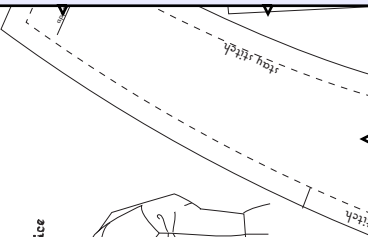
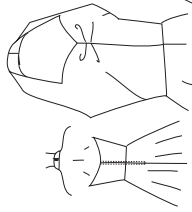
51cm / 10"
m / 35 1/2"

29"

19cm / 7 1/2"

Cut lining

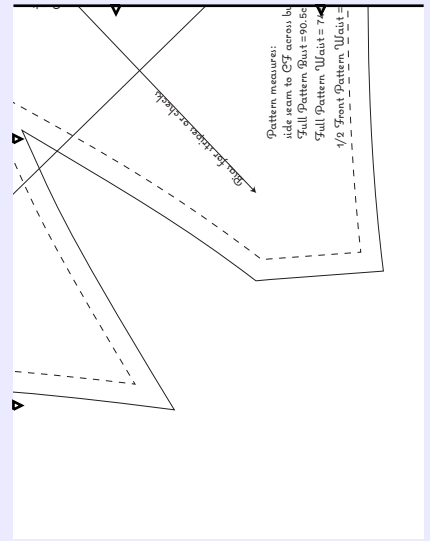
Vera Venus
Sweetheart Duster Bodice
July 2015



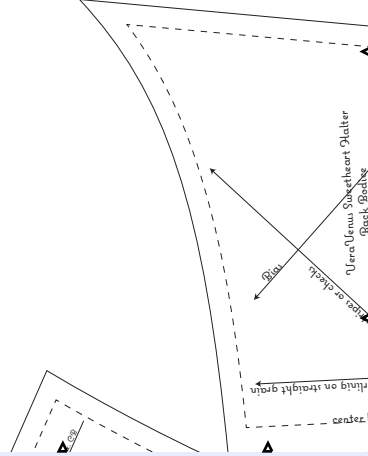
Vera Venus Sweetheart Duster
Front Bodice

- Cut 1 pair on bias in outer fabric
- Cut 1 pair lining on straight grain
- Cut 1 pair interfacing on straight grain

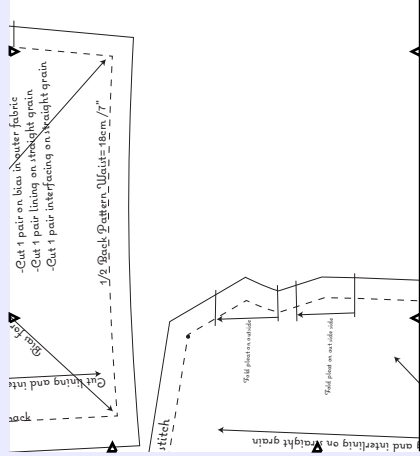
Blau for stripe or check



- Pattern measures:
 Bust = 36"
 Full Pattern Bust = 40"
 Full Pattern Waist = 36"
 1/2 Front Pattern Waist = 18"

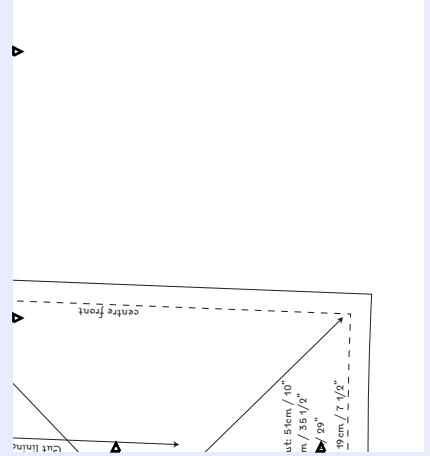
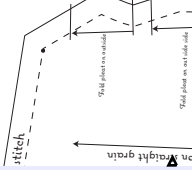


Vera Venus Sweetheart Duster
Back Bodice



- Cut 1 pair on bias in outer fabric
- Cut 1 pair lining on straight grain
- Cut 1 pair interfacing on straight grain

1/2 Back Pattern Waist = 18cm / 7"



- at 5cm / 10"
 m / 3.5" / 2"
 19cm / 7 1/2"