

Vera Venus

4 piece 1/2 circle skirt pattern

-74cm / 29" waist

-66cm / 26" skirt length

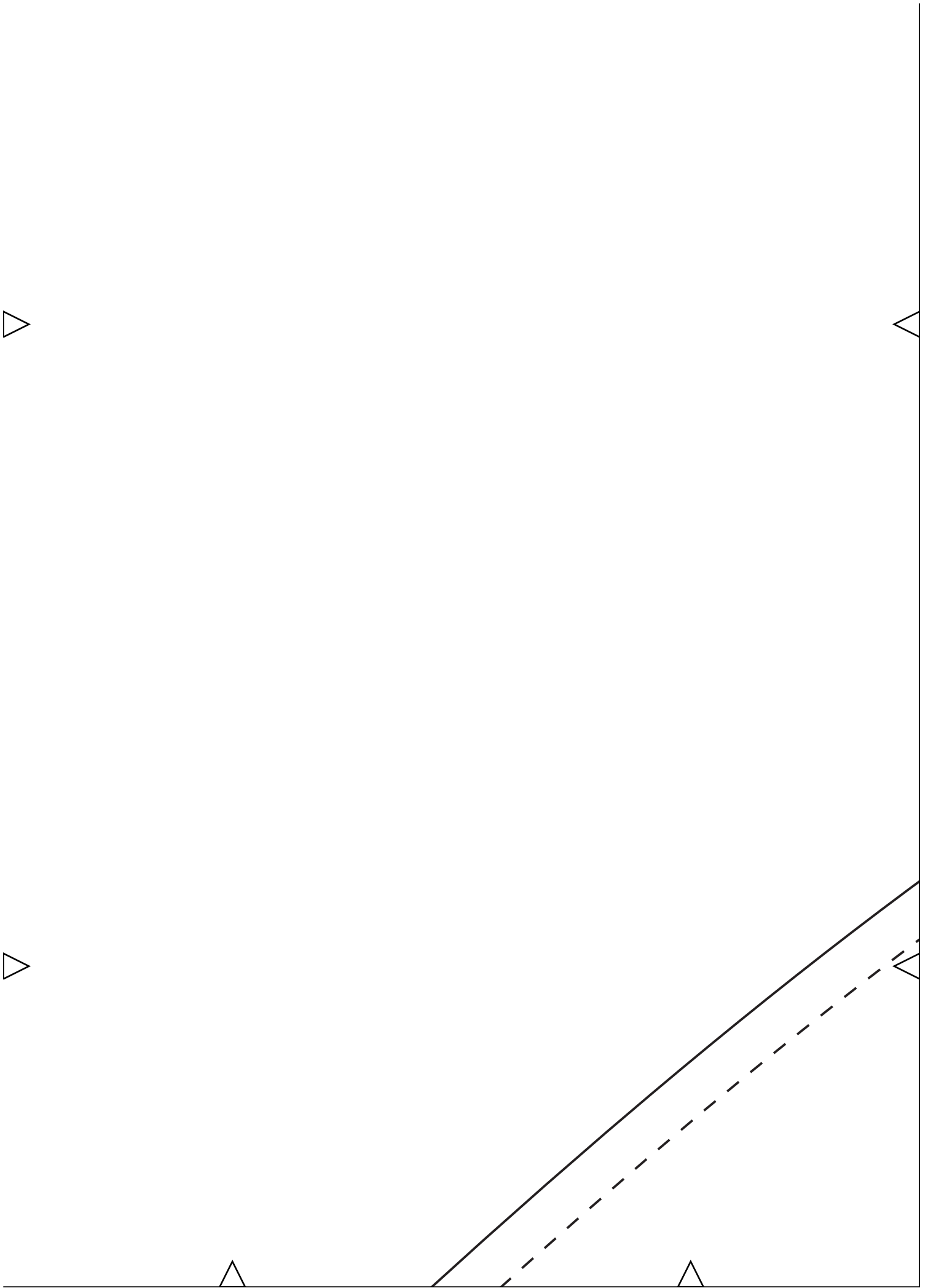
Use with my Sweetheart bodice pattern to make the dress pictured...

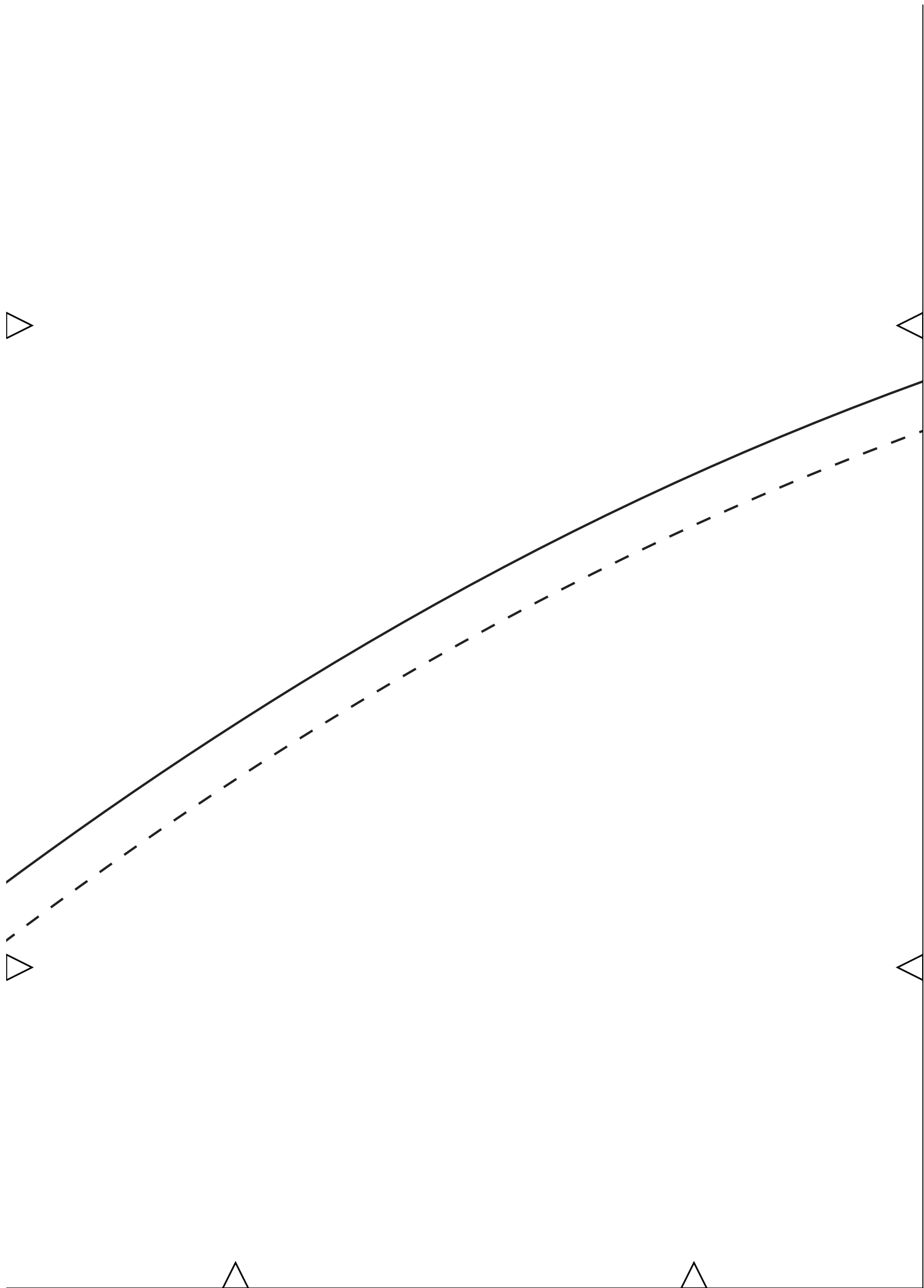
or as a separate skirt with a waistband.

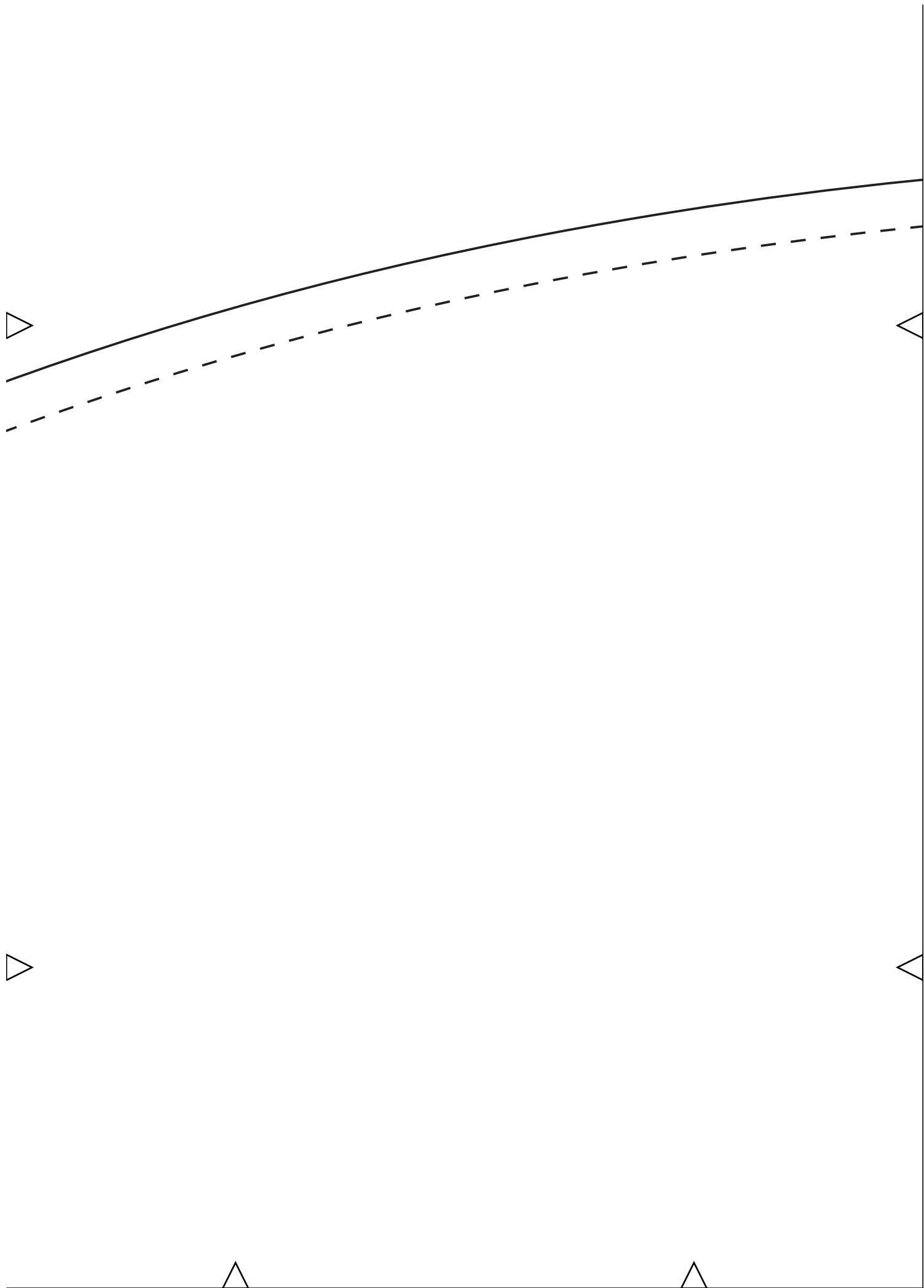
You could add side-seam pockets or patch pockets.

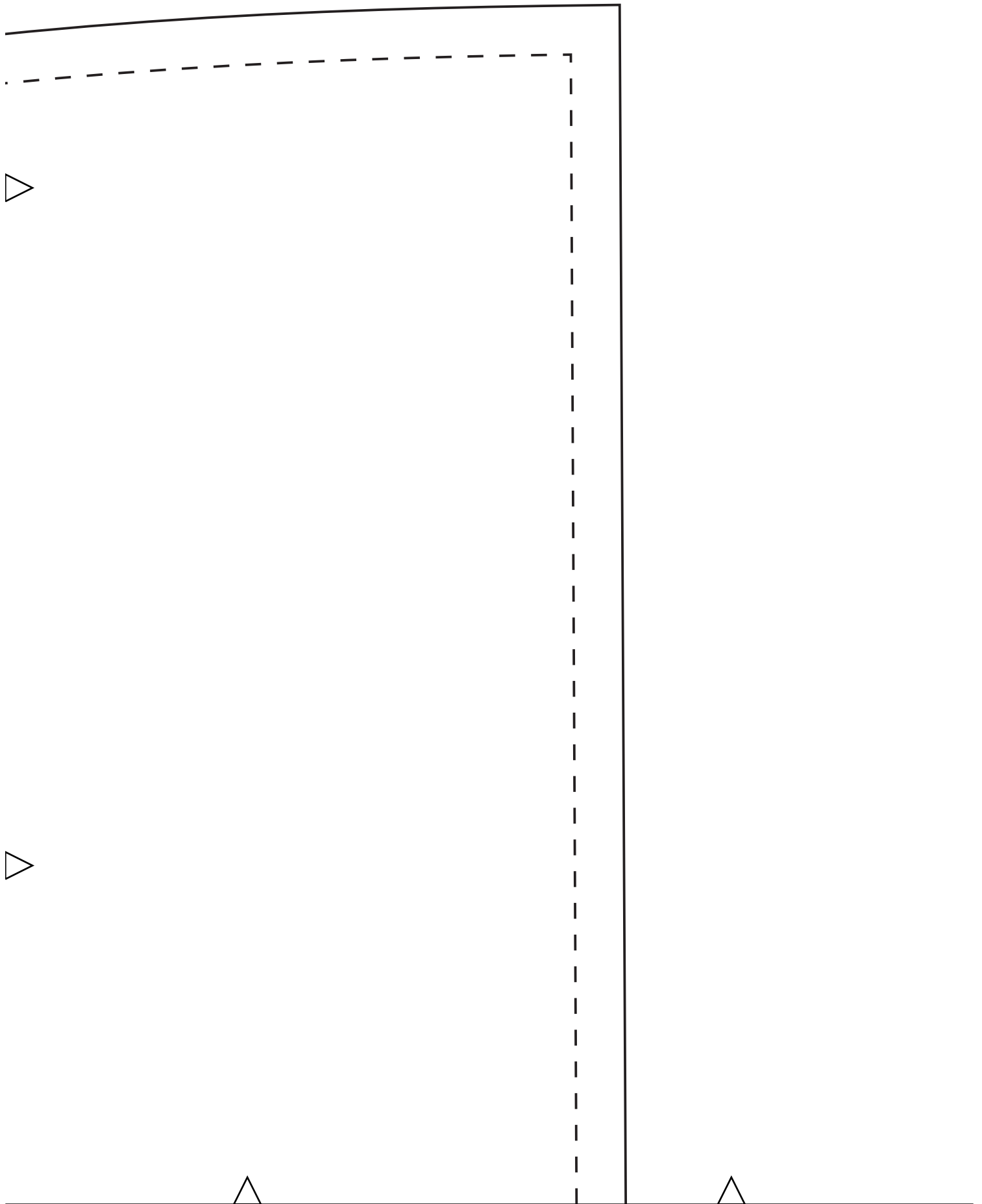
Also the grainline can be changed so the c.f & c.b. are on the straight grain if preferred.

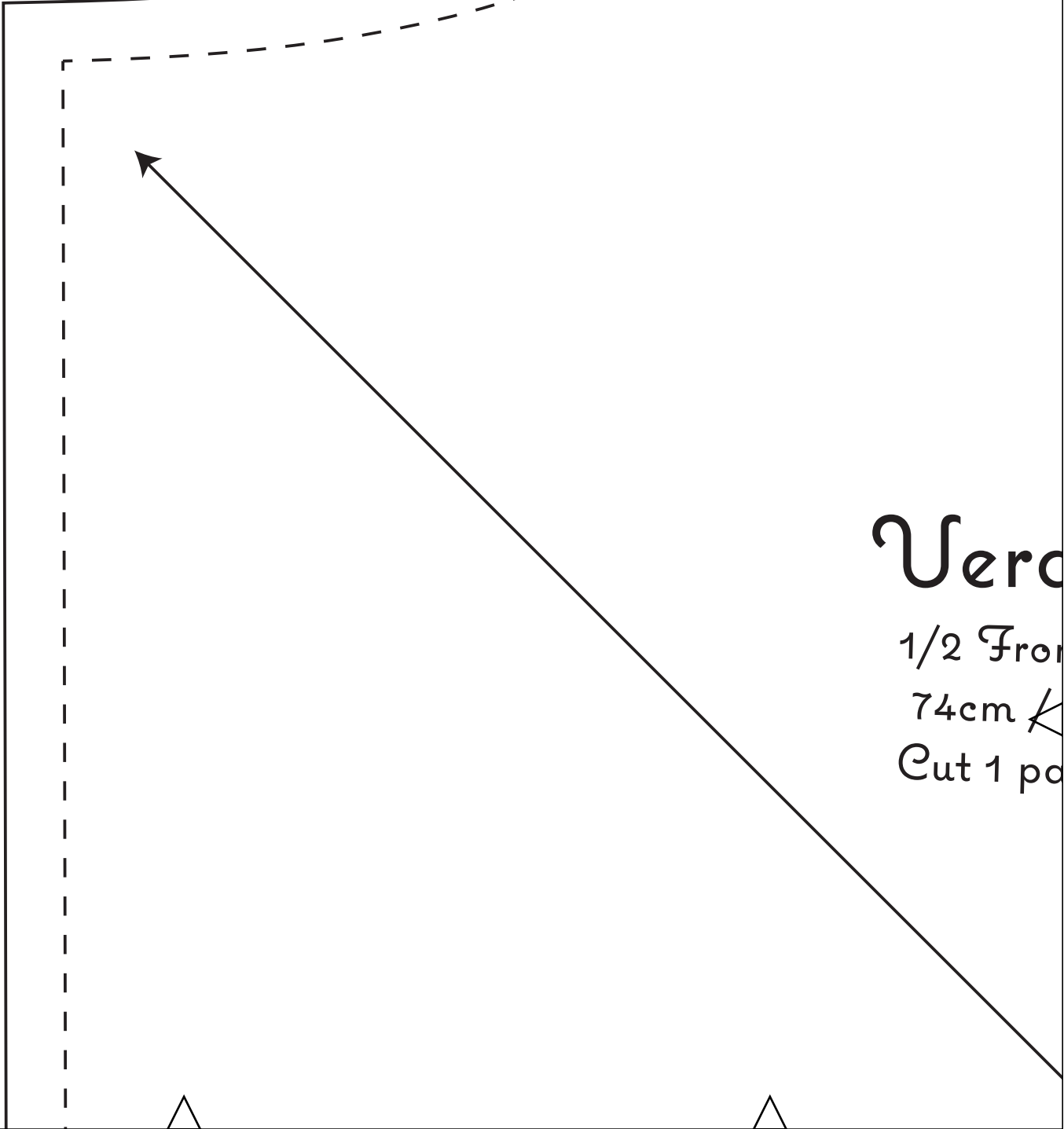
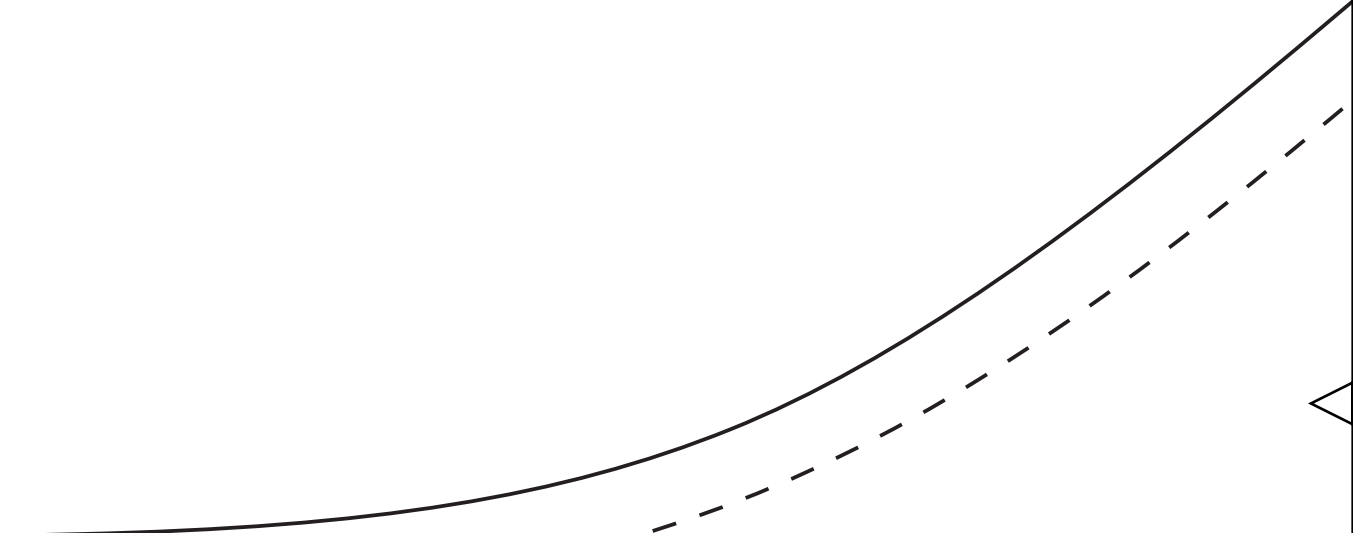












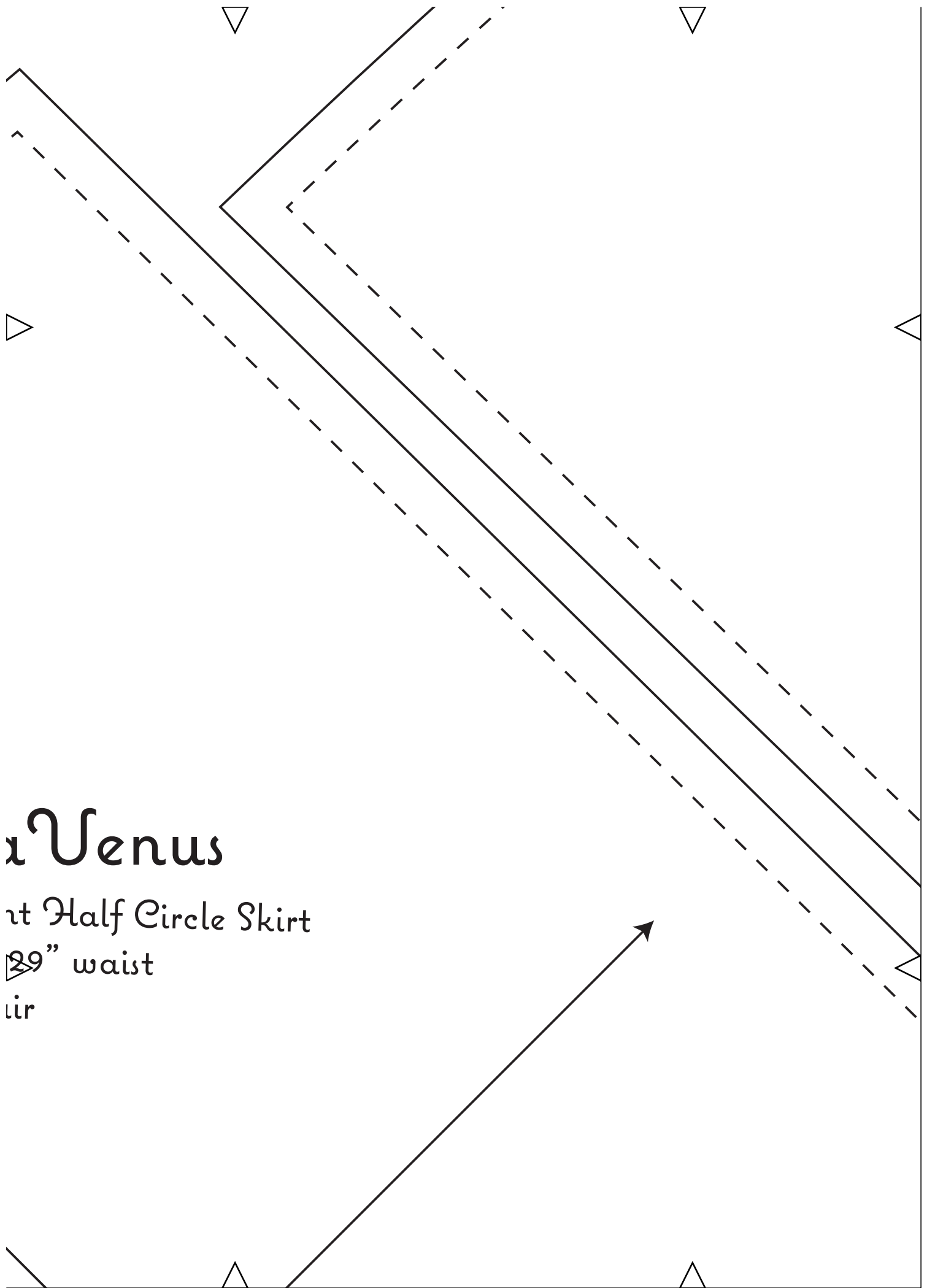
Uerd

1/2 Fron

74cm /

Cut 1 po



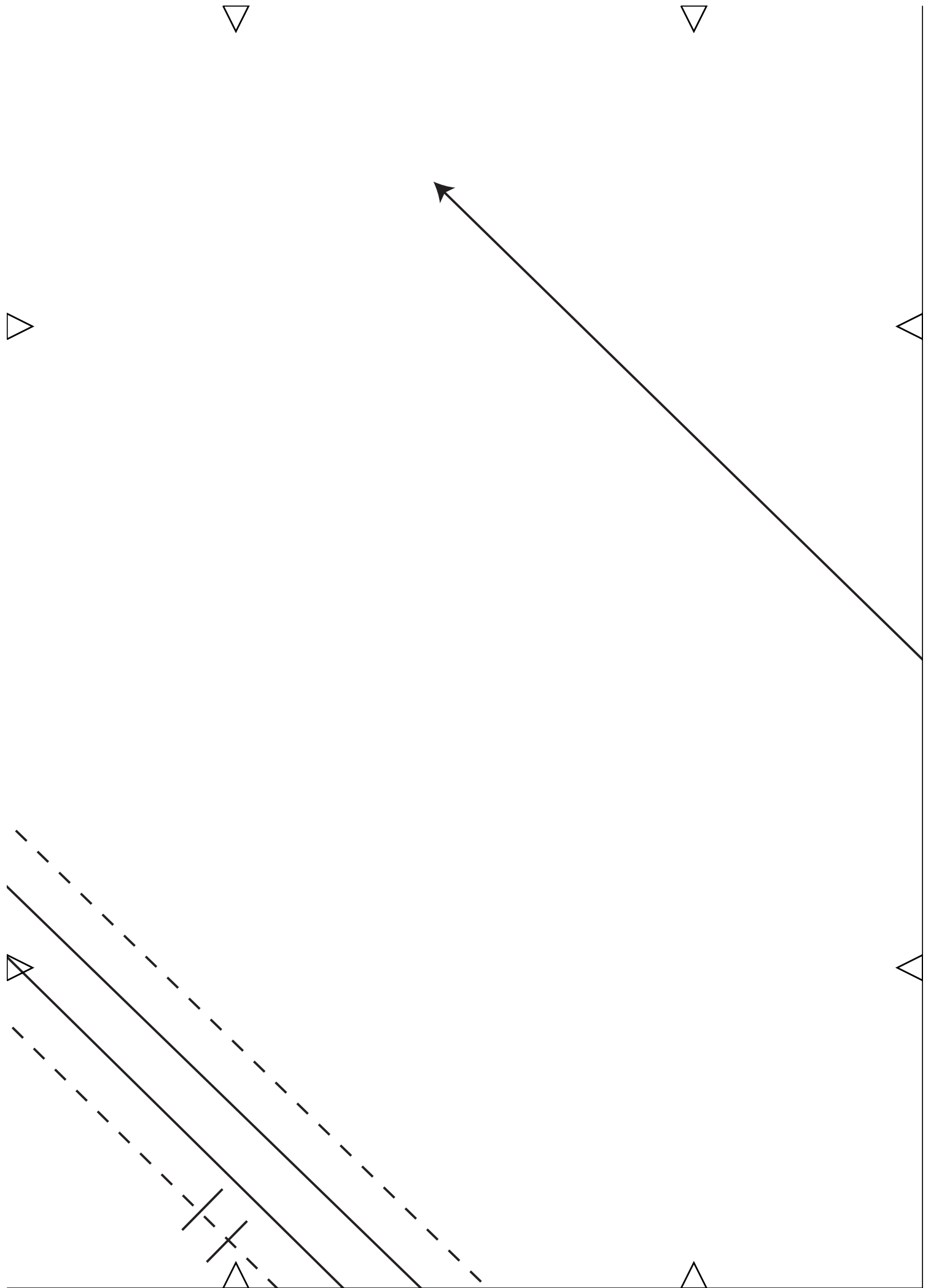


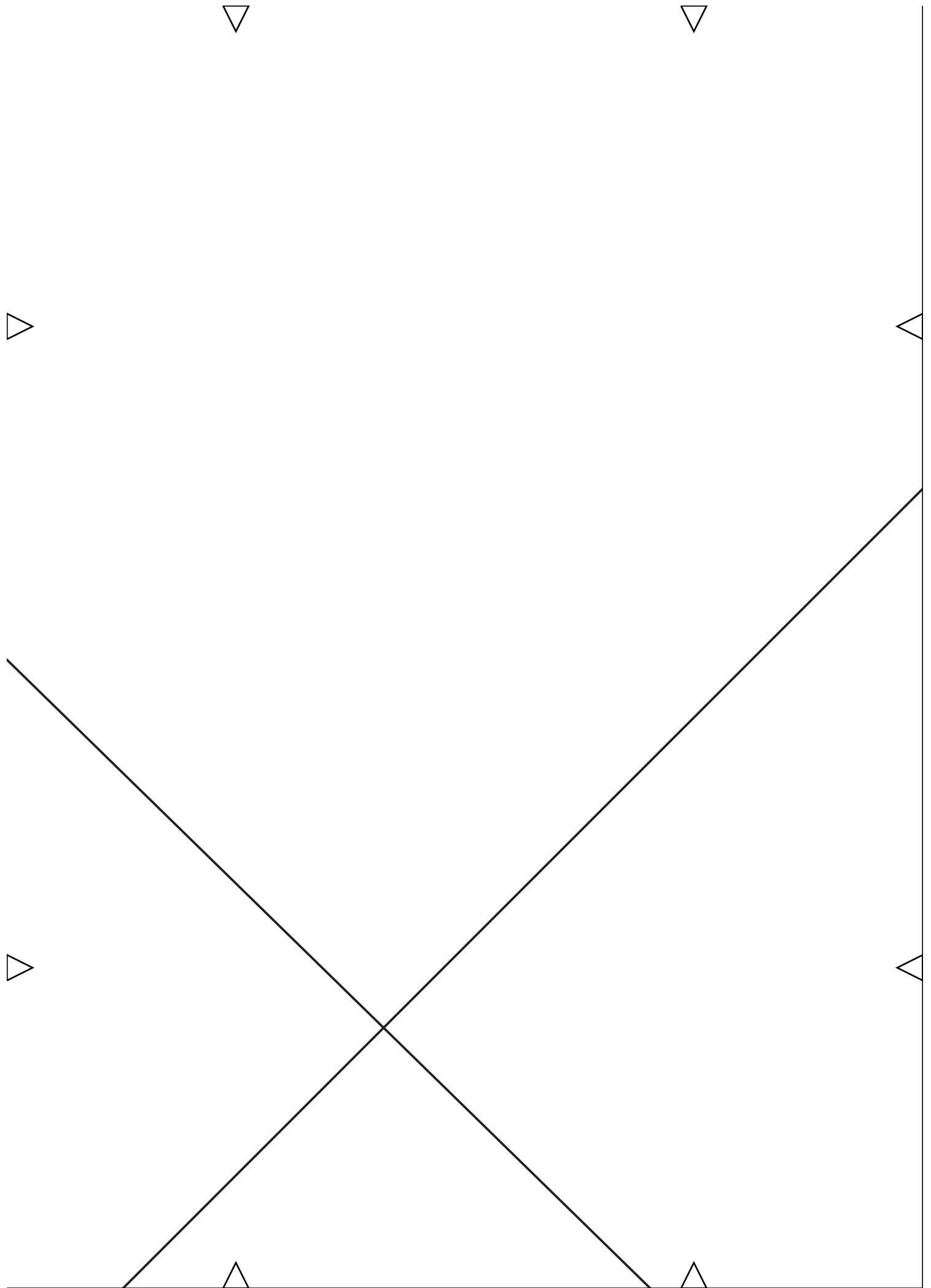
Venus

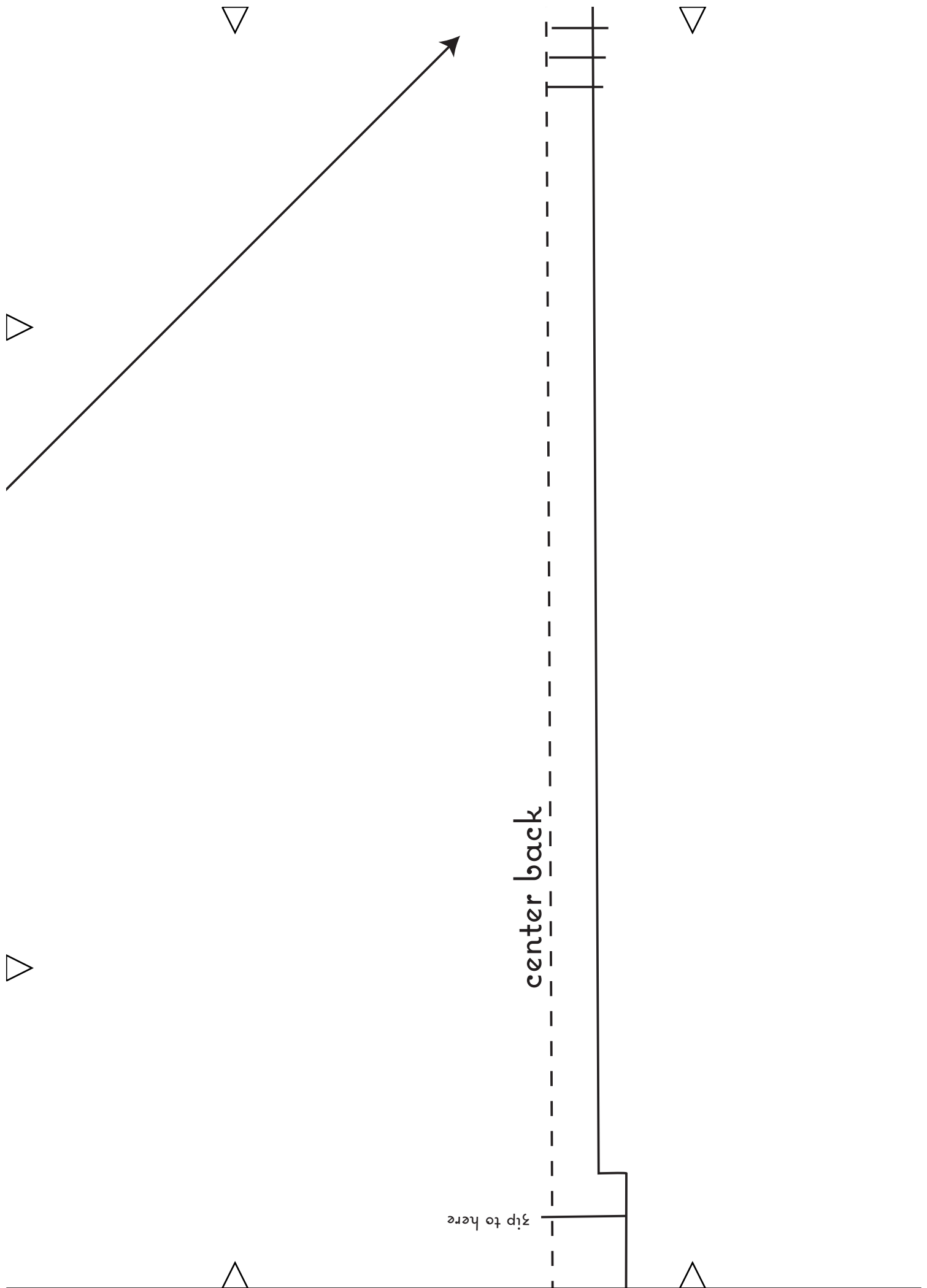
at Half Circle Skirt

29" waist

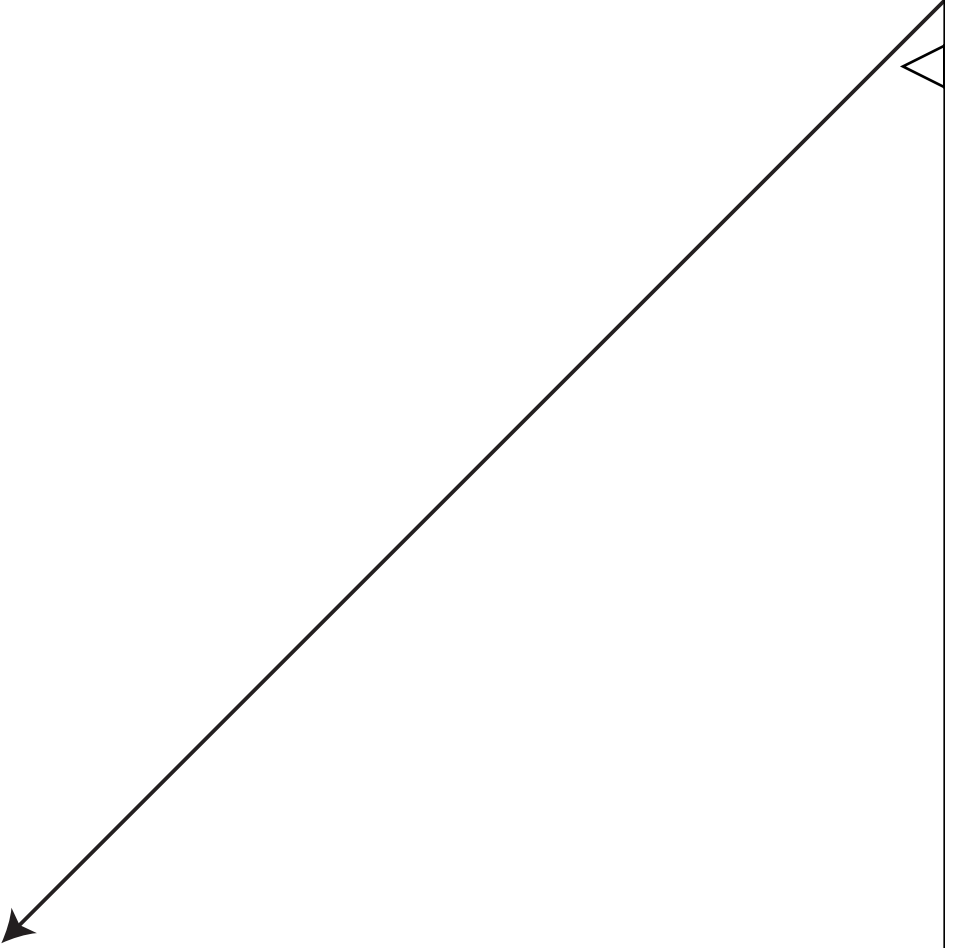
dir

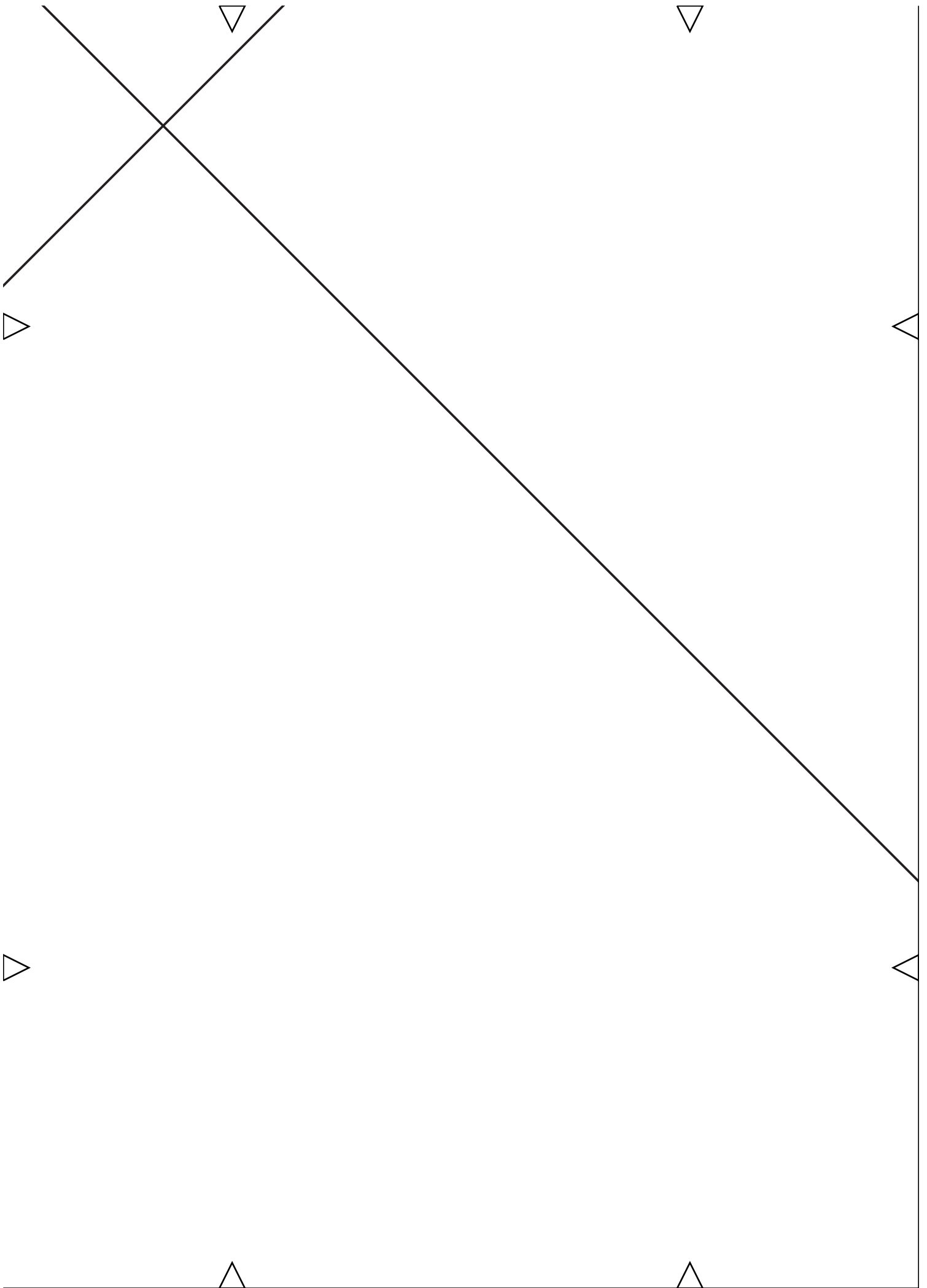


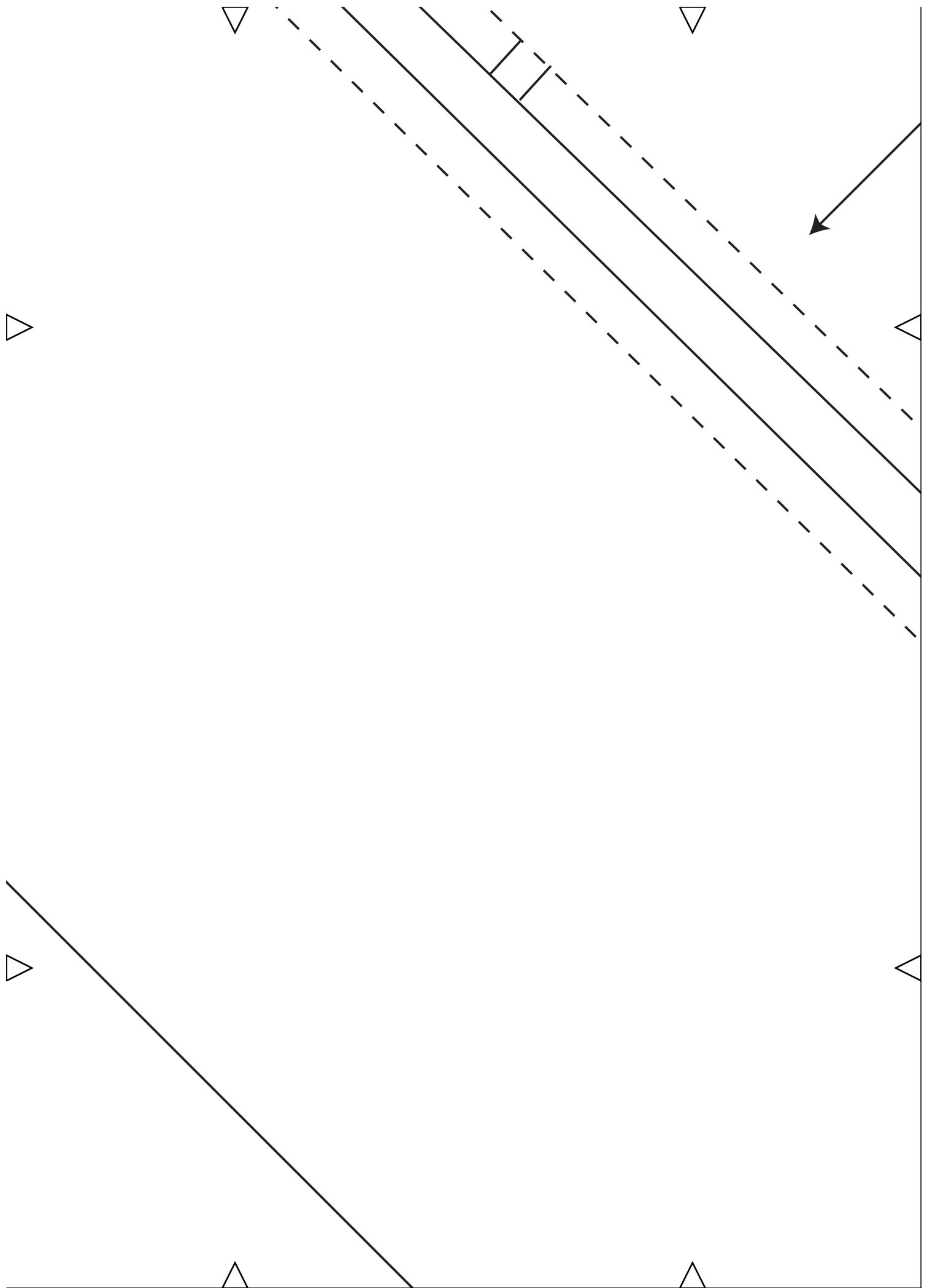




centre front





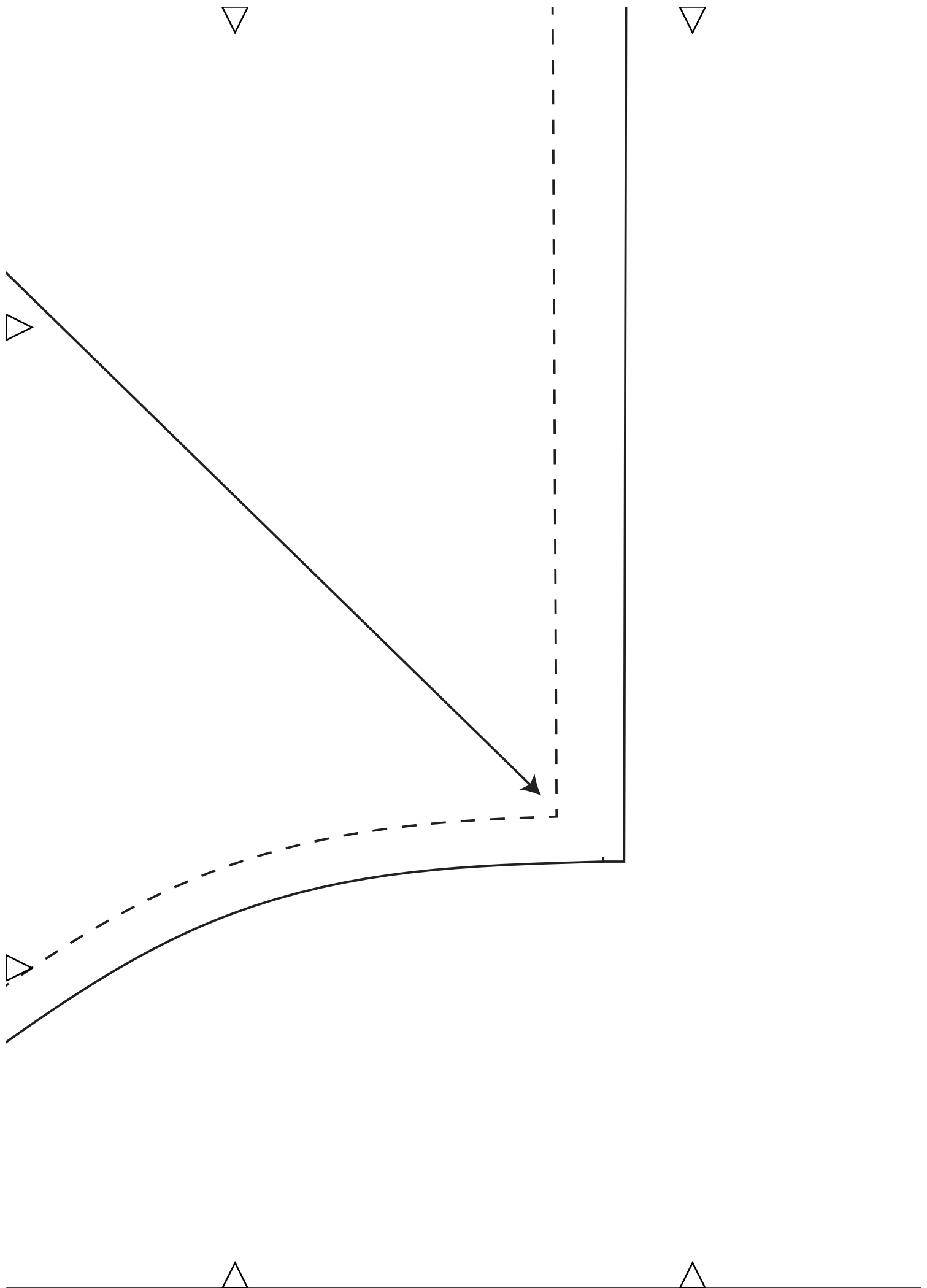


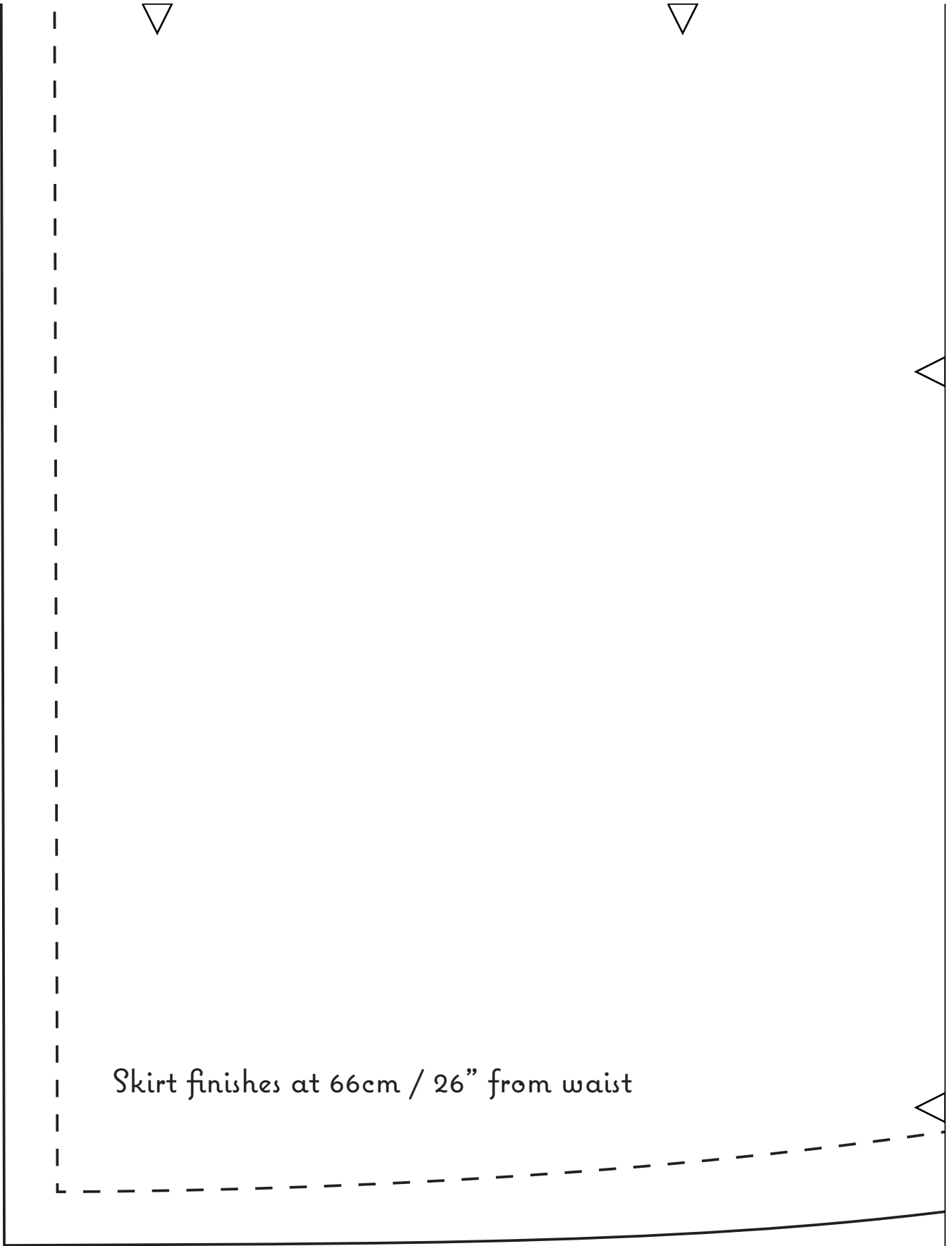
Vera Venus

1/2 Back Half Circle Skirt
Cut 1 pair

74cm / 29" waist







Skirt finishes at 66cm / 26" from waist

